

Share ▼

e-Gazette No. 005 - August, 2015. If this email doesn't look right, then:

[View this email in your browser](#)



In this e-Gazette....

- [MINISTER WANTS LESS PARK - MORE INFRASTRUCTURE](#)
- [THREE NEW SPORTS BUILDINGS PROPOSED FOR PARK LANDS](#)
- [DIGGING UP PARK 11 - OFF HACKNEY RD](#)
- [ONE OF THE WORLD'S GREATEST CITY PARKS?](#)
- [NEW BICYCLE-PEDESTRIAN PATH IN NORTH PARK LANDS](#)
- [CONSULTATION - CHEAPER BY THE DOZEN?](#)
- [PHOTOS OF THE DAY](#)



MINISTER WANTS LESS PARK - MORE INFRASTRUCTURE

Share ▼



The SA Water pumping station on land stolen from Kangatilla (Park 4) opposite the Piccadilly Cinemas.

Lovers of the Adelaide Park Lands are waiting with bated breath for the Minister for Planning, the Hon. John Rau, to make his decision on a Development Plan Amendment (DPA) that would clear away obstacles to allow more "infrastructure" (such as the pumping station above) to be built on Park Lands.

The impetus for the Minister's DPA was the planned O-Bahn extension through Rundle Park and Rymill Park, but if the DPA is approved, its consequences will be far greater than just the proposed busway.

At a public hearing on Tuesday 28 July, APPA vice-president Damien Mugavin and many others spoke of the potential devastation that could occur to Park Lands if the Government goes ahead with this.

The proposal is to make infrastructure 'merit' status rather than non-complying. Currently public infrastructure is assessed as non-complying development, as detailed in Development Plan, Adelaide (City). ... Under these changes, there will be no public notification or consultation and no right to challenge infrastructure projects in the Park Lands. Additionally, it sidesteps the constraint on development in the Park Lands included in the Adelaide Parklands Act 2005.

The definition of "infrastructure" in the Development Act 1993 includes railways, tunnels, electricity power stations, transmission towers, sewerage treatment works, water supply facilities, bus depots, prisons and much more. So, for example, the public would have no say in the granting of the permit for a Nuclear Power Station nor a sewage treatment works in the Park Lands. The definition of "infrastructure" in the Development Act 1993 includes railways, tunnels, electricity power stations, transmission towers, sewerage treatment works, water supply facilities, bus depots, prisons and much more.

So, for example, the public would have no say in the granting of the permit for a Nuclear Power Station nor a sewage treatment works in the Park Lands.

The Minister's decision is expected to be announced very soon.

Share ▼



APPA Vice-president Damien Mugavin addressing the Development Policy Advisory Committee public hearing on 28 July

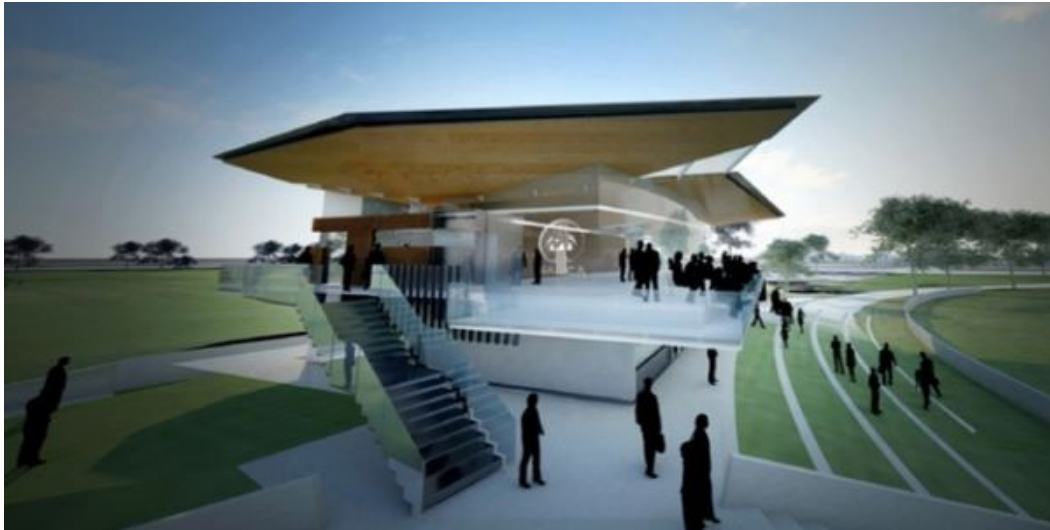
THREE NEW SPORTS BUILDINGS PROPOSED FOR PARK LANDS

In recent weeks, three separate apparently unrelated proposals have been put forward for new buildings to accommodate sporting clubs on the Park Lands.

These proposals are for:

- the SA Cricket Association (SACA) on Narnungga (Park 25)
- the Adelaide Comets Soccer Club on Tampawardli (Park 24); and
- Prince Alfred College and the PA Old Collegians on Tidlangga (Park 9);

Share ▼



Adelaide City Council has agreed *in-principle* to an \$8 million parklands sports hub redevelopment proposed by the South Australian Cricket Association .

SACA says the upgrades would reduce the footprint of SACA's existing buildings on the site by 65 per cent. But the new facilities would also include a licenced "function centre"

The City Council says the building would be used not just by cricketers but also for football, lacrosse and even beach volleyball, players, spectators and officials. More details here: .
<http://indaily.com.au/news/2015/08/12/council-signs-off-8m-saca-parklands-redevelopment/>



This is the newly-released "concept design" for Ellis Park, (part of Tampawardli (Park 24) in the west Park Lands, which is being promoted by the Adelaide Comets Football (i.e. soccer) club. More details here:
<http://www.adelaidecomets.com.au/ellis-park-sports-master-plan/>

Share ▼



View from East (Oval & Mann Road)



View from North (MacKinnon Parade)

These are two views of the building proposed by the Prince Alfred College and the PA Old Collegians Sporting Clubs for Tidlangga (Park 9) off Bundeys Rd. More details here:
http://ncapps.adelaidecitycouncil.com/agendasminutes/files08/Agendas/APA/2015/2015_07_23APA.pdf

WHAT IS APPA'S VIEW OF THESE PROPOSALS?

APPA is generally in sympathy with efforts to help people enjoy the Park Lands, whether for passive recreation, or organised sport. We do not object to well-planned facilities that improve public usage and appreciation of the Park Lands.

However we DO object to buildings and fences whose main function is to exclude the public, restrict access, or convert Park Lands into areas of commerce or profit.

If these three buildings can go ahead and successfully reduce the impact of existing old dilapidated buildings, while improving public access to and appreciation of the Park Lands, APPA will welcome them. However we have good cause to remain sceptical, because promises of this nature, in the very recent past, have not been honoured.

We are also keen to ensure that as a condition of any lease or licence, areas of the Park Lands remain open to the public when they are not being used by the relevant sporting bodies.

Share ▼



A 2014 example of an Adelaide University sports building near McKinnon Pde that was supposedly going to "reduce the footprint" on Warnpangga (Park 10).

DIGGING UP PARK 11 - OFF HACKNEY RD

If you see excavators digging soon just north of Botanic Park, alongside Hackney Rd, don't assume that the digging is necessarily connected with the proposed O-Bahn extension through Rundle Park and Rymill Park. As it turns out, SA Water is about to award the contract for construction of an upgraded water main.

Share ▼



Work is likely to start in October, although this date may alter after the contractor is appointed. SA Water advises that the contractor will be obliged to provide a 24/7 information line, and an email address for enquiries.



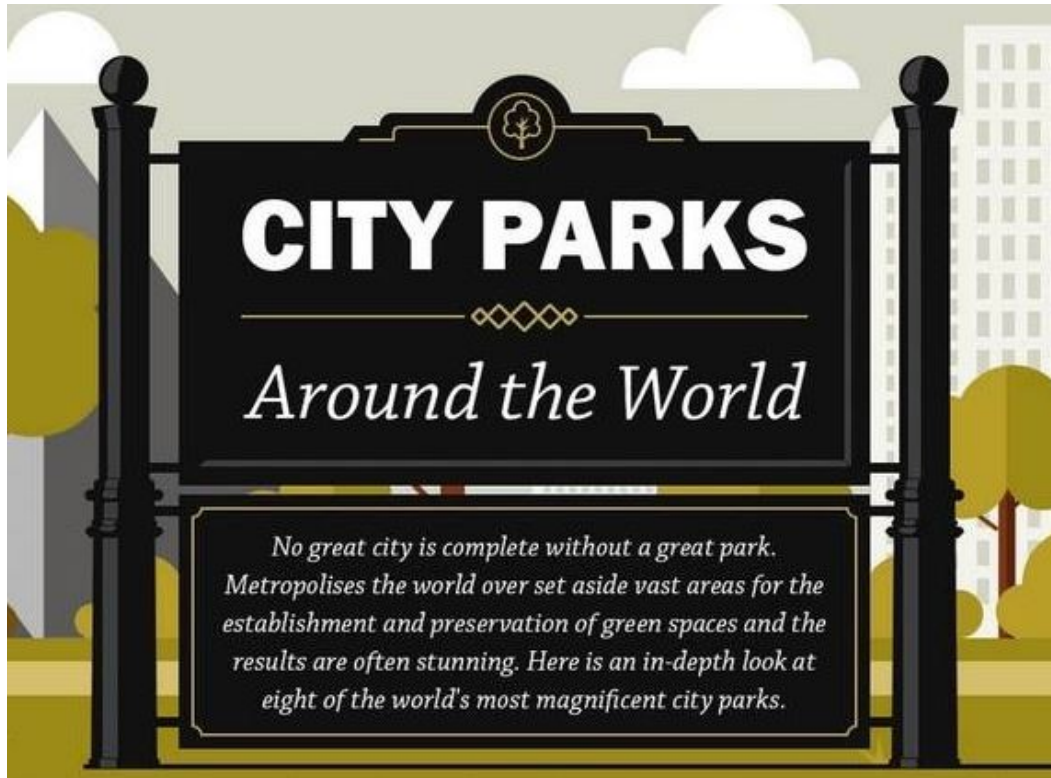
SA Water has written to residents and businesses on Hackney Road. Its letter advises:

"As previously advised, SA Water plans to renew 2.2kms of very old trunk water main on the north bound lane of Hackney Road, between North Terrace and the Robe Terrace/Park Terrace intersection. The pipeline allows water to be pumped to the Hope Valley water treatment plant and has a critical role in providing water for the Adelaide CBD.

"SA Water has been working closely with the Department of Planning, Transport and Infrastructure (DPTI) regarding traffic management and with the DPTI O-Bahn Tunnel Team to co-ordinate works and to avoid unnecessary delays to traffic. As such a portion of the new pipeline between Plane Tree Drive and the Bundeys Rd intersection will be installed in the Park Lands immediately alongside Hackney Rd.

"SA Water has also been working closely with the Botanic Gardens and Adelaide City Council to determine the best possible alignment for this new section of pipe. SA Water is fully aware of the need to protect the interests of the Botanic Gardens and the Park Lands and as such an independent arborist was appointed to assist in identifying the optimum alignment to minimise tree removal and ensure tree and tree root protection. SA Water will continue to work with these key stakeholders through to the installation of the new water main."

ONE OF THE WORLD'S GREATEST CITY PARKS?



Here is an example of how some world cities promote themselves by reference to their iconic parks.
<http://www.treehugger.com/corporate-responsibility/infographic-guide-eight-important-city-parks.html>

No-one could deny the iconic status of London's Hyde Park, New York's Central Park, or the six others on this list. However, it appears unlikely that the author of this article (based in Canada) even knows about Adelaide's unique status as the world's only city built inside a park.

Can we persuade our own State Government to celebrate our heritage and promote Adelaide to a world audience in this way?

In the meantime, APPA urges you to share with the article's author, Lloyd Alter, a link to our own Park Lands photo album: https://www.flickr.com/photos/adel_park_land_preservation

NEW BICYCLE-PEDESTRIAN PATH IN NORTH PARK LANDS

Share ▼



As part of the current upgrade of Park Terrace and Fitzroy Terrace, the Department of Planning Transport and Infrastructure will be removing an on-road bicycle lane from Fitzroy Terrace.

Cyclists and pedestrians will instead be offered a new off-road shared path, through Pardipardinyilla (Park 2) just to the north of Adelaide Aquatic Centre.

More information is available [here](#) on the Department's web site.

CONSULTATION - CHEAPER BY THE DOZEN?



if you were hoping to have your say about major events in the Park Lands any time between now and next March, you have already missed your opportunity.

In what might be characterised as shambolic consultation, the Adelaide City Council last month lumped together five events (scheduled between November 2015 and March 2016) and sought public feedback on all of them, at the

Share ▼

The five events are:

- [Fringe Club & Corner](#) - in Rymill Park between 10 February and 14 March 2016.
- [Gluttony](#) - in Rymill Park between 11 February and 13 March 2016.
- [The Garden of Unearthly Delights](#) - in Rundle Park between 11 February and 14 March 2016.
- [Australian International 3 Day Event](#) in Rymill Park, Ityamai-tpina and Victoria Park between 19 November and 22 November 2015.
- [Santos Tour Down Under](#) - in Victoria Square between 16 January and 24 January 2016

If you wanted to give the City Council some constructive feedback about conditions that might perhaps be placed upon the use of the Park Lands during these events, then you are officially too late. The short consultation period closed on 18 August.

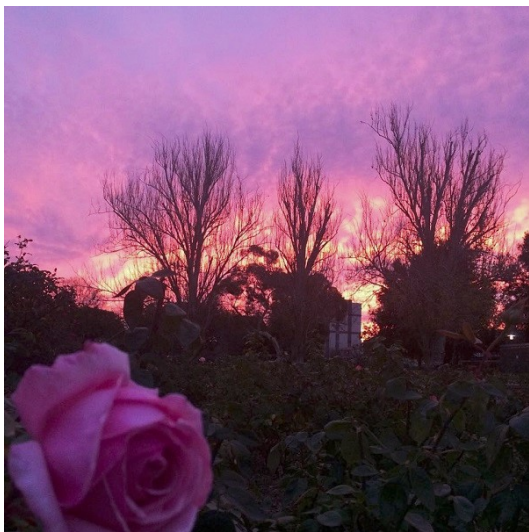
However, you can still try emailing your suggestions to events@adelaidecitycouncil.com

PHOTOS OF THE DAY

Recent highlights



Share ▾



From the top:

- a) North Adelaide Golf Course, Pirltawardli (Park 1)
- b) Adelaide Uni Blacks v Mitchell Park Lions, Karrawirra (Park 12)
- c) Horse agistment, Nantu Wama (Park 6) off Kingston Tce
- d) Sunset, Veale Gardens, Walyu Yarta (Park 21) - [photographer: Lyn Long]
- e) Aerial photo of Kuntingga (Park 7), Parngutilla (Park 8) and Tidlangga (Park 9)



APPA on Facebook



@adelparklands



APPA website



Our photos on Flickr



Share ▼

MailChimp.