

e-Gazette No. 009 - December, 2015. If this email doesn't look right, then:

[View this email in your browser](#)



In this e-Gazette....

- [RYMILL PARK - WHAT YOU CAN DO BEFORE IT'S TOO LATE](#)
- [MINISTER HUNTER: PARK LANDS COME LAST](#)
- [GIVE APPA MEMBERSHIP FOR XMAS](#)
- [NORTH TERRACE BECOMES NORTH ROAD](#)
- [PETITION HITS 1,000 SIGNATURES. WHAT NEXT?](#)
- [SPORTS CLUBS AND THEIR 'FUNCTION CENTRES'](#)
- [DOING A MASTERS OR PhD in 2016?](#)
- [THE DRAFT PARK LANDS MANAGEMENT STRATEGY](#)
- [PARK LANDS ART PRIZE - JUDGES BUSY OVER XMAS](#)
- [PHOTOS OF THE DAY](#)



RYMILL PARK - WHAT YOU CAN DO BEFORE IT'S TOO LATE

The photo on the top is Rymill Park as we know it today. The photo below is Government propaganda or fantasy. It is supposed to show what the same part of Rymill Park would look like after the O-Bahn busway trench is dug and partly covered over. In the Government's picture, the Rymill Park lake has disappeared (or is it shrouded in fog?) In the Government's fantasy world, all of the 61 trees destroyed to make way for the busway have grown back almost as tall as they were before.



**THIRTEEN THINGS YOU CAN DO TO HELP SAVE RYMILL PARK
(and other parts of the Adelaide Park Lands)**

- 1. Write to Transport Minister Stephen Mullighan and urge him to rethink his devastating plans to dig a massive trench through Rymill Park, destroying 61 trees and shattering the calm of the Rymill Park lake and picnic sites.**

Here are the Minister's contact details:

<http://www.premier.sa.gov.au/index.php/ministers/stephen-mullighan>

And here is a draft letter that you can use, or adapt and edit if you wish:

<http://www.adelaide-parklands.org/pdfs/Draft%20Letter%20to%20Stephen%20Mullighan.pdf>

[Subscribe](#)[Share ▼](#)[Past Issues](#)[Translate](#)**the Adelaide Park Lands"**

<https://www.change.org/p/sa-premier-jay-weatherill-stop-trying-to-sell-off-or-build-over-the-adelaide-park-lands/>

3. **Share our petition on your own Facebook page, and/or email the petition link** to your friends, relatives, workmates etc. and ask them to sign as well. **Do you know anyone famous?** Ask them to sign our petition and tell their followers about it.
4. **Look at this YouTube video** - <https://youtu.be/uDx1T4vGINU> *Egypt is Selling off the Pyramids!* - How could anyone be stupid enough to get rid of the one thing that makes a place unique?
5. **Share the YouTube video link on your Facebook page, and/or other social media, or email the video link to your friends, relatives, workmates etc.**
6. **"Like" APPA on Facebook, and/or follow APPA on Instagram, Twitter, or Flickr** (follow the links at the bottom of this newsletter). This will allow you to see (and share) our 'Adelaide Parklands Photo of the Day' every day, and much more.
7. **Share, re-tweet, or re-post from APPA's social media posts to your friends** (maybe not everyday, but at least sometimes!)
8. **Join (or ask others to join) our mailing list. It's free.** If you received this newsletter direct from APPA then you're already on our mailing list. If so, ask others to join our mailing list by sending them this link: <http://eepurl.com/bJVvzD>
9. **Dip into your wallet. Join APPA. Single membership is \$25, concession just \$15. Signup options are here:** <http://www.adelaide-parklands.org/membership.html>
10. **Give an APPA membership for Christmas, with a personalised certificate to print and give** (See below).
11. **If you become a member, you can nominate to be on the APPA Committee and drive our work into the future.** We'd love your help! Committee members are chosen by ballot at the Annual General Meeting each April.
12. **Donate funds to APPA to help us in our objectives. A 'donate' button' is on this page:** <http://www.adelaide-parklands.org/membership.html>
13. **Mark these dates in your calendar: Saturday 16 April until Sunday 29 May.** Exhibition of finalists in the biennial Adelaide Park Lands Biennial Art Prize at the Festival Centre Art Space. (See story below.)

MINISTER HUNTER: PARK LANDS COME LAST



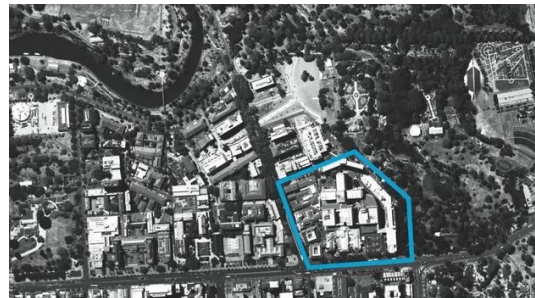
The State Government has confirmed, in writing, that it will not even think about returning any part of the old RAH site to Park Lands until it has assessed worldwide commercial interest in the land.

APPA wrote to the Minister for Sustainability, Environment and Conservation, the Hon. Ian Hunter MLC, to ask why he had not sought a report on the future of the old RAH site as he was required to do under section 23 of the *Adelaide Park Lands Act 2005*. (See the relevant part of the law below.)

The State Government has been very clear since 2009 that the old RAH site will not be needed as a hospital once the new RAH is operational. But Minister Hunter now says it is "premature to prepare a report on the future use of the site and the status of the land when all avenues for future use have yet to be explored." He says the "Formal Expression of Interest process is an important part of the process of determining the future use of the land by the State Government."

The Minister's attitude makes section 23 entirely meaningless. By the time, eventually, that a Ministerial report is prepared on "the action required to make the land suitable for public use as Park Lands", contracts will almost certainly have been signed, and the builders will have moved in.

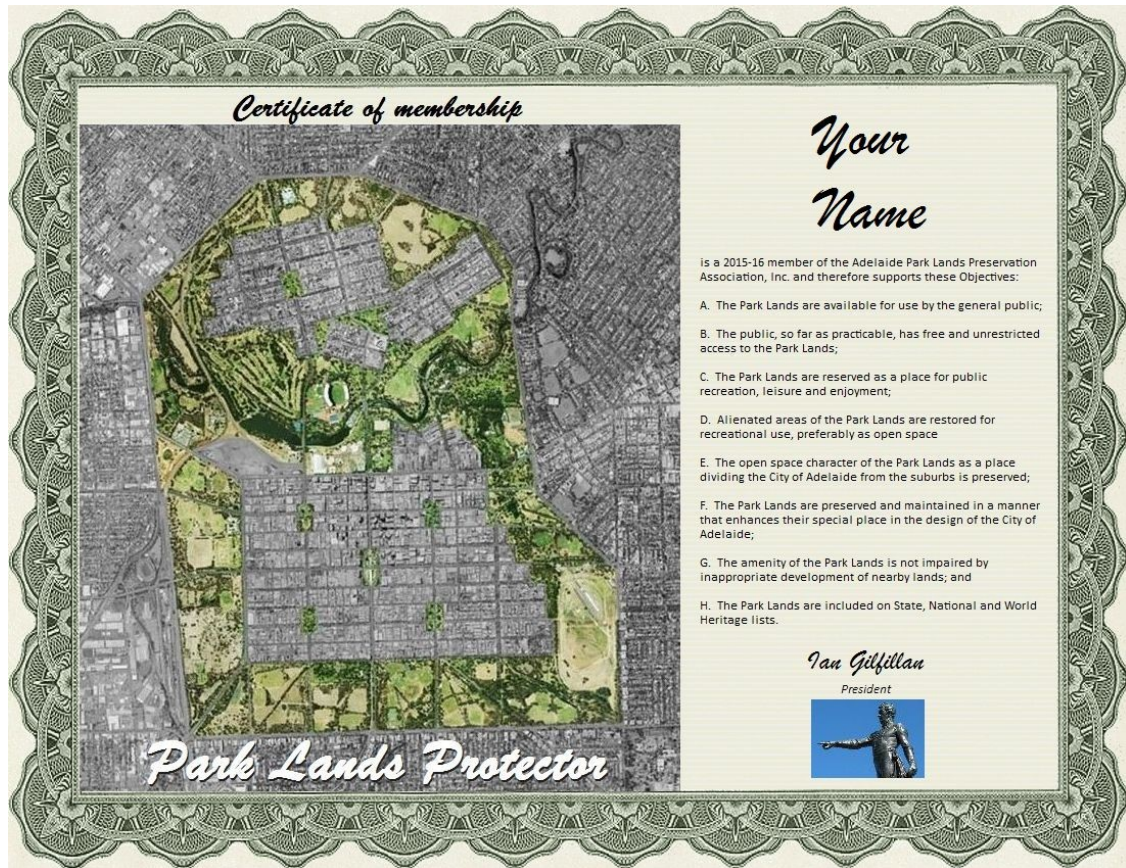
- This is APPA's letter of 27 September: http://www.adelaide-parklands.org/pdfs/APPA_Minister.pdf
- This is the Minister's reply: http://www.adelaide-parklands.org/pdfs/Minister_Hunter.pdf



23—Steps regarding change in intended use of land

- (1) If land within the Adelaide Park Lands occupied by the Crown or a State authority is no longer required for any of its existing uses, the Minister must ensure that a report concerning the State Government's position on the future use and status of the land is prepared within the prescribed period.
- (2) A report under subsection (1) must include information on the condition of the land and on the action (if any) that would be required in order to make the land suitable for public use as park lands.

Section 23 of the *Adelaide Park Lands Act 2005*.
Why hasn't the Minister complied?

GIVE APPA MEMBERSHIP FOR XMAS

A last-minute Christmas present suggestion!

If you know someone who cares about the Adelaide Park Lands, make them a member of APPA.

It's easy to nominate a relative or friend to become an APPA member.

Membership fees for 2015-16 are \$25 single (or \$15 concession). You can pay by Paypal or bank transfer here: <http://www.adelaide-parklands.org/membership.html>

Just tell us the correct name to put on the gift membership certificate. (It's a PDF file to print on A4 paper, suitable for framing.)

If you are already an APPA member, and would like your own membership certificate, just email the Secretary: appa.social@gmail.com

Don't forget there is also an **APPA shop** full of our branded merchandise. Unfortunately, it's too late to order any APPA T-shirts or drinkware for Christmas, but if you have a birthday coming up, drop your loved ones a hint that you'd love something from [the APPA shop!](#)

NORTH TERRACE BECOMES NORTH ROAD



At one time, Adelaide's four "Terraces" (North Tce, East Tce, South Tce and West Tce) adjoined Park Lands.

The design of the city was that Adelaide's major buildings would go within the boundaries of the four Terraces and would be surrounded by Park Lands.

This month marks the last nail in the coffin of the north side of North Terrace. Not a single space will be left for any Park Lands or River Torrens views from the south side of North Tce now that the Government has unveiled its grand plans to have an unbroken line of major public buildings from the Morphett Street bridge westwards.

Note that in this Government artwork, even the Torrens River seems to have disappeared west of the weir.

Nor does this mockup picture tell the complete story. Eastwards of this picture, construction work is underway on a second expansion of the Adelaide Convention Centre, and soon afterwards there will be a casino expansion, an office tower, restaurants and shops on what is now the Festival Plaza.

North Terrace is no longer an appropriate name. It should now be known as North Road, like a road in any other city, and any prospect of reclaiming even a skerrick of Park Lands on North Terrace has been dashed.

PETITION HITS 1,000 SIGNATURES. WHAT NEXT?

change.org

Petitions



SA Premier, Jay Weatherill: STOP trying to sell off or build over the Adelaide Park Lands

The Adelaide Park Lands are unique. We have the only city in the world built inside a Park. But...

More than 1,000 people have now signed APPA's petition:

<https://www.change.org/p/sa-premier-jay-weatherill-stop-trying-to-sell-off-or-build-over-the-adelaide-park-lands> but this is just the first wave of support.

APPA is gearing up to bring the petition to the attention of many more people through the use of social media.

There are many worthwhile causes competing for public attention. One method of cutting through the clamour is get endorsement from prominent people such as respected academics, sports stars, entertainers, or others. ,

Do you know someone who has a prominent public profile, and many followers on social media? If you think that person would care about the future of the Adelaide Park Lands, please invite them to sign APPA's petition, but even more importantly, also tell their followers about it.

We have reached 1,000 signatures purely through our loyal grassroots support, but now it's time to alert the wider public to our disappearing Park Lands. The Government will pay attention when they can't afford to ignore our numbers!

If you do nothing else, at least forward this email newsletter to your friends and urge them to sign!

SPORTS CLUBS AND THEIR 'FUNCTION CENTRES'

Ever since the University of Adelaide pulled off this Park Lands heist in 2014, APPA has been wary of the trend for sports organisations to try to set up "function centres" on Park Lands.

Before



After



We have [previously highlighted](#) attempts by Prince Alfred College and their Old Collegians to build a grand pavilion and function centre on Tidlangga (Park 9) off Bundeys Rd.

This month, our focus turns to what is planned for Ellis Park, part of Tampawardli (Park 24) off West Terrace.

The Adelaide High School has already taken away a large slice of Tampawardli. Now the same Park is subject to a proposal for a new building that would include a bar, and a so-called "community room" that would seat "at least 200".

The "[Stage 1 concept plan](#)" is being put forward to Adelaide City Council by the Adelaide Comets Soccer Club.

We can't help wondering what impact any Stage 2 and Stage 3 proposals might have on the Park Lands.



Not just change rooms - this is a function centre proposed for Ellis Park that would seat "at least 200".

There are approximately 31 sporting leases and licences in the Adelaide Park Lands (together with a number of sporting sub-let arrangements). These leases and licences provide for the playing of over 20 different sports, occupy approximately 13% of the Park Lands and (with approximately 1.7 million visits) account for approximately 20% of total Park Lands uses.

APPA welcomes sporting uses of the Park Lands. It's great to see so many people freely enjoying these great public spaces. However, we object to Park Lands lessees or licence holders getting permission to construct function centres that reduce the area of public open space. Out of 37 current sporting-group lease-holders, 16 of them have also liquor licences for their Park Lands premises.

If you want to hold a function for your sporting club, there are numerous City and near-City hotels and restaurants that can cater for you. It is inconsistent with the concept of a "park" that ever-growing portions of public space should be closed and locked exclusively for the benefit of any club's members or supporters.

Adelaide City Council is currently reviewing its 'leasing and licensing' policies as they apply to sporting clubs.



DOING A MASTERS OR PhD in 2016?



If you or someone you know is contemplating a Masters dissertation or PhD thesis in one of the social sciences 2016, please ask them to consider the Adelaide Park Lands as a topic.

There has been too little academic interest in our national-heritage listed Park Lands.

[Subscribe](#)[Share ▼](#)[Past Issues](#)[Translate](#)

The great exception was a Master of Arts Degree Dissertation by Jim Daly in 1980, updated for his landmark 1987 book "*Decisions and Disasters - Alienation of the Adelaide Park Lands.*"

This book remains a fundamentally important resource for anyone who loves the Adelaide Park Lands and wants to understand how we have lost so much of them over the years.

But the book is showing its age. So much has transpired since 1987 - and the pace of Park Lands assaults has stepped up rapidly in the current decade. The topic urgently needs revisiting with the rigour worthy of an Honours Dissertation or PhD thesis.

THE DRAFT PARK LANDS MANAGEMENT STRATEGY



ADELAIDE PARK LANDS MANAGEMENT STRATEGY

DRAFT FOR FORMAL CONSIDERATION

Have your say on what happens in the Park Lands! This strategy is the main planning document for the Adelaide Park Lands.

It describes the future directions and key projects for the Park Lands.

But it's still in draft form. The City Council wants feedback on the draft document.

Earlier this year, the Adelaide City Council asked for public feedback on shaping the Park Lands into the future.

The results of that consultation were published in a "[Summary of Public Engagement](#)"

The release of a Draft Park Lands Management Strategy is the next step. Consultation on the Draft Strategy is open until 5pm on Friday 26 February. [Learn more here:](#)

<http://yoursay.adelaidecitycouncil.com/pl-mgmt-strat>

PARK LANDS ART PRIZE - JUDGES BUSY OVER XMAS

Entries closed earlier this month for the 2016 Adelaide Park Lands Art Prize.

There were exactly 200 entries, down from the exactly 300 who entered the last event in 2014.

The fall in numbers may be attributable to a realisation after the 2014 event, that the Park Lands Art Prize is of a high standard and represents a substantial challenge to both amateur and professional artists alike.

Not all entries will be on public display - only those that make the cut as "finalists". In 2014, there were 87 finalists. This time, the chosen finalists will be notified by 28 January.

The winners will be announced at an invitation-only event on the evening of Friday 15 April,

The public exhibition of all the finalists will run from Saturday 16 April to Sunday 29 May 2016 at the Adelaide Festival Centre "Artspace".

<http://www.parklandsart.com/>

Gail Kellett
Finalist
Park Lands Art Prize 2014



PHOTOS OF THE DAY

Recent highlights



[Subscribe](#)

[Share](#) ▼

[Past Issues](#)

[Translate](#)



From the top:

- a) Tampawardli (Park 24) the view from near the railway line in the western Park Lands
- b) Statue of SA's most famous "suffragette" Catherine Helen Spence, Light Square / Wauwi
- c) Rymill Park/Murlawirrapurka (Park 14) soon to be devastated by a massive trench for a busway on the other side of this lake
- d) Tuthangga (Park 17) off Hutt Rd
- e) Ngampa Yarta dog park (Park 5) off Le Fevre Rd

The Park Lands 'photo of the day' series has been running since May 2014, and **the collection of Park Lands photos now numbers more than 600**. We maintain (and gradually grow) 37 separate albums - one for each one of our 30 named Parks, six squares (and one album for Park Lands losses: 'Alienations'). To browse the photos follow the link below to ['Our photos on Flickr'](#).



[APPA on Facebook](#)



[@adelparklands](#)



[APPA website](#)



[Our photos on Flickr](#)



Copyright © Adelaide Park Lands Preservation Association, Inc. [2015] All rights reserved.

[unsubscribe from this list](#) [update subscription preferences](#)

