

[Subscribe](#)[Share ▼](#)[Past Issues](#)[Translate](#)

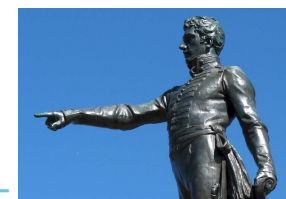
e-Gazette No. 010 - January, 2016. If this email doesn't look right, then:

[View this email in your browser](#)



## In this e-Gazette....

- [PARK LANDS REDUCE HEAT, REDUCE CBD ENERGY DEMAND](#)
- [O-BAHN, PART 1 - INFORMATION NOT FREE](#)
- [O-BAHN, PART 2 - UPPER HOUSE COMMITTEE PONDERERS](#)
- [O-BAHN, PART 3 - WE MUST NOT CONSIDER THE PARK LANDS](#)
- [SCHOOL HOLIDAYS IN THE PARK LANDS](#)
- [APPA's NEW WEB SITE](#)
- [IT'S EASY TO CRITICISE, BUT.....](#)
- [BILL BRYSON ON OPEN SPACE AROUND CITIES](#)
- [PARK LANDS ART PRIZE - FINALISTS TO BE NAMED SOON](#)
- [PHOTOS OF THE DAY](#)



### **PARK LANDS REDUCE HEAT, REDUCE CBD ENERGY DEMAND**

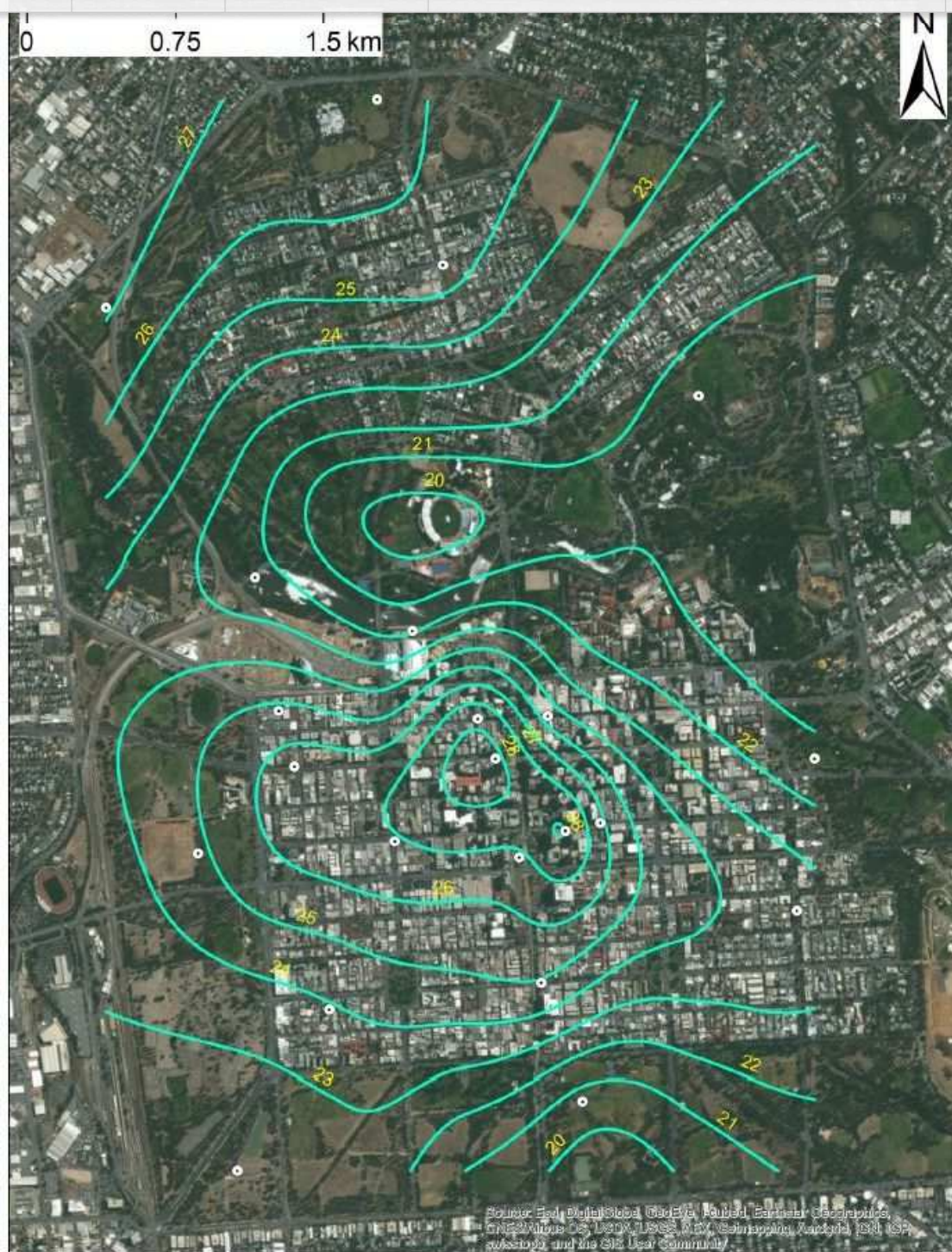
Scientific studies led by Flinders University have shown that the unique Adelaide Park Lands effectively reduce the air temperature in the Adelaide CBD, which in turn on warm days reduces electricity demand in Adelaide buildings, especially those located close to the Park Lands.

Subscribe

Share ▼

Past Issues

Translate



Most cities are subject to what's known as the 'Urban Heat Island' effect. Hotter temperatures are experienced in densely built urban areas (even at night) and Adelaide is no exception.

However Adelaide is exceptional among all other cities in the world, As the authors of a [2013 study](#) pointed out:

*Adelaide is unique in having a CBD that is surrounded entirely by a band of parks of the order of 500 metres wide, so might be expected to have thermal characteristics that differ from other national and international cities.*

They found, unsurprisingly, that air temperature in the Adelaide Park Lands was effectively cooler than the CBD by about (on average, throughout the year) 1.5 degrees in the night time, and 0.5 degrees in the daytime.

The same researchers found, in a subsequent 2015 study, that not only are the Park Lands on average cooler than the CBD, they also play a role in reducing the 'Urban Heat Island' effect in the city. The picture above shows that

Subscribe

Share ▼

Past Issues

Translate

*the effect is most pronounced in CBD areas that are closer to the Park Lands*

The picture illustrates a six degree difference (notably this was at 1.30am after a 34-degree day on 7 March 2011) between the Urban Heat Island surrounding the tallest Adelaide buildings and the coolest part of the Park Lands around Adelaide Oval and the southern part of Kurungga (Park 20) off Greenhill Rd.

The studies did not estimate the extent to which the cooling effect of the Park Lands contributes to lower energy costs for Adelaide property owners. Nevertheless, a 2014 study, in the *Journal of Urban Climate* found that above a threshold temperature of 17 degrees, electricity consumption in Adelaide CBD buildings increases with air temperature. So the Park Lands' role in keeping Adelaide cooler than it might otherwise be is undoubtedly saving energy costs for building owners.

The authors concluded:

*Thus, a parkland in a city like Adelaide needs to be at least a size of 150 x 150 m<sup>2</sup> to achieve its optimal heat mitigation effect. From the UHI [Urban Heat Island] mitigation point of view, the Adelaide parkland belts and several parklands (150 x 200 m<sup>2</sup>) in the CBD and North Adelaide seem to be well designed.*

More research is being contemplated to ascertain the extent of Park Lands benefits to the CBD on days of extreme heat.

### O-BAHN, PART 1 - INFORMATION NOT FREE



The Department of Planning Transport and Infrastructure says it will cost \$2,594.60 to find out what Minister John Rau was told before he approved fast-tracking "infrastructure" in the Park Lands, including the O-Bahn through Rundle Park and Rymill Park.

Two APPA members, the Liberal Member for Adelaide Rachel Sanderson, and Greens leader, Mark Parnell) have both requested copies of *"all materials given or supplied to the Minister for Planning in relation to his consideration and decision whether to approve, amend or refuse the Park Lands Zone Development Amendment (approval of which was Gazetted on 17 September 2015.)"*

The Department says there are an estimated 200 documents involved and the cost of supplying them to either Ms Sanderson or Mr Parnell would be \$2,594.60 (each!) The Department is refusing to proceed unless either or both the MPs provides a substantial deposit.

APPA has asked both Ms Sanderson and Mr Parnell to help us work out how a proposal that was opposed by 168 public submissions - namely to allow any "infrastructure" in the Park Lands without public notification - could nevertheless have been approved by the Minister.

***In the meantime, the Government's plans for the O-Bahn's deep trench through the two parks are not pausing for a moment. But you can TAKE ACTION!***

[Subscribe](#)[Share ▼](#)[Past Issues](#)[Translate](#)

## O-BAHN, PART 2 - UPPER HOUSE COMMITTEE PONDERERS



A Select Committee of Upper House State MP's has been looking into the controversial O-Bahn project. The Committee last heard evidence on 21 October, from (among others) APPA's vice-president Emeritus Professor Damien Mugavin, the president of the Hackney Residents Association, Serena Coulls, and the Member for Adelaide, Rachel Sanderson

The Committee's secretary has advised APPA that the Committee is continuing its deliberations and that a report will probably be tabled in Parliament early this year.

***In the meantime, the Government's plans for the O-Bahn's deep trench through the two parks are not pausing for a moment. But you can TAKE ACTION!***

---

## O-BAHN, PART 3 - WE MUST NOT CONSIDER THE PARK LANDS

[Subscribe](#)[Share ▼](#)[Past Issues](#)[Translate](#)

You might have noticed advertising seeking public comments on the O-Bahn City Access Project.

The Development Assessment Commission is seeking public comments, no later than 25 January, but ONLY for the works that are proposed alongside Hackney Rd and Dequetteville Tce.

The Minister's change to the Park Lands Zone Development Plan which took effect on 17 September, means that "infrastructure" works in the Park Lands are now totally immune from any form of public comment.

Under the law as recently changed by the Planning Minister, public comments on any proposed Park Lands "infrastructure" are not only unwelcome. They are prohibited, irrelevant and MUST NOT be taken into account by the Development Assessment Commission. That's the law!

The Department is prohibited from seeking public comments, and cannot take into public comments if they are received, because "infrastructure" in the Park Lands, (since 17 September 2015) is now "on merit" and a Category 1 development, just as if the O-Bahn were a standard house proposed for a residential zone. It's literally in the same category of development, Category 1.

So the O-Bahn's swathe of destruction through Rundle Park and Rymill Park must be assessed by the Development Assessment Commission without any reference to people who might, perhaps, love the Park Lands and want to have something to say about it.

So yes, make a submission, if you wish to the Development Assessment Commission about what is proposed for the O-Bahn adjacent to College Park, Hackney, St Peters and Gilberton.

But don't mention the war!

***And in the meantime, the Government's plans for the O-Bahn's deep trench through the two parks are not pausing for a moment. But you can TAKE ACTION!***

---

## SCHOOL HOLIDAYS IN THE PARK LANDS

[Subscribe](#)[Share](#) ▼[Past Issues](#)[Translate](#)

If you're looking for things to do in the Adelaide Park Lands (with or without children) then the Adelaide City Council can give you a number of ideas.

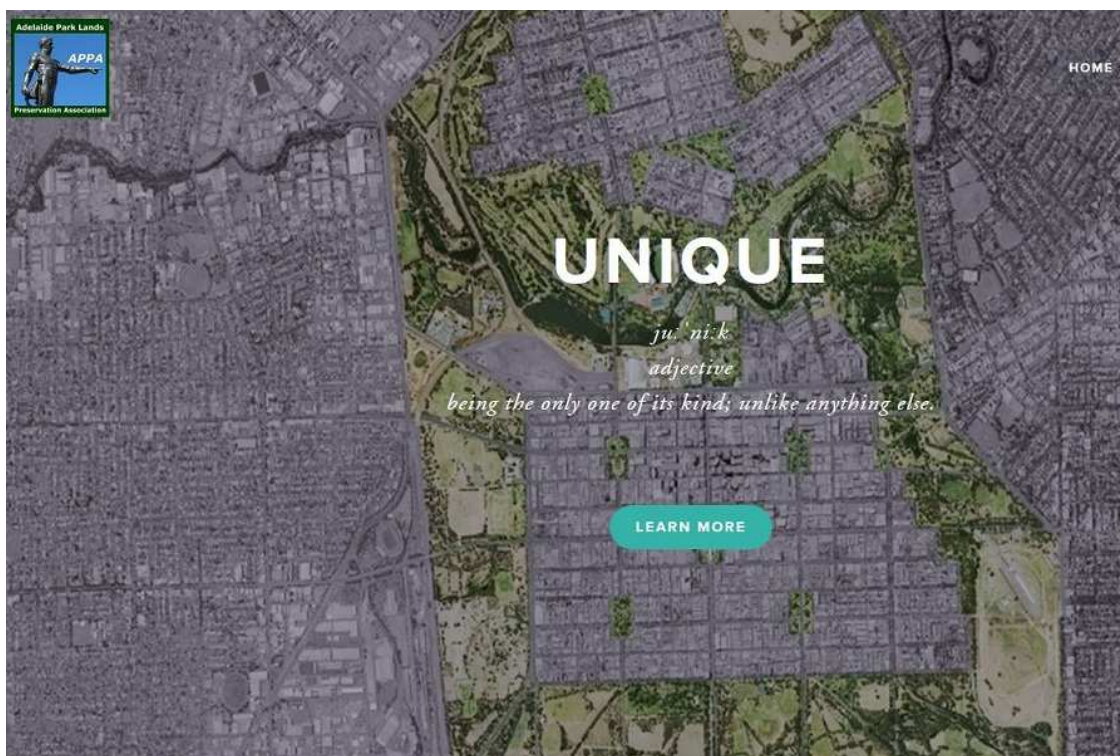
[What's On In the Park Lands](#) is updated regularly, listing only current and coming events.

The list from 15 January to 11 February includes suggestions such as.

- *Australia Day In the City*, Elder Park, Jan 26th
- *Al Salaam Festival*, Veale Gardens, Jan 31st
- *24 Fit Club*, Victoria Square every Friday 12 noon and 6pm
- *Ride with Keith Conlon*, from Halifax Street to the River Torrens every Wednesday 9 - 10.45am,

See more details here: [What's On In the Park Lands](#)

## APPA's NEW WEB SITE



APPA's website has been given a fresh new look.

We have created what we hope will be an inviting entry point for our members and the wider public to:

[Subscribe](#)[Share ▼](#)[Past Issues](#)[Translate](#)[Learn more about the Park Lands.](#)

- see the Park Lands in our 'Gallery';
- recognise the popular misconceptions about them;
- understand the many threats they are under; and most importantly;
- "take action" to protect them, with a list of 10 things that you can do.

The new website builds on the heritage of the previous APPA website. It retains links to our newsletters dating back to 2003 in the APPA 'archive'. It also provides options for taking out APPA membership, receiving donations and other offers of help.

Please take a moment or two to peruse the new web site, add it to your Bookmarks or Favourites and (we hope) recommend it to your friends.

<http://www.adelaide-parklands.asn.au>

### IT'S EASY TO CRITICISE, BUT.....



Managing the Park Lands is a difficult balancing act. The Adelaide City Council has some 700 hectares of Park Land to manage, and of course has to do so within its budget.

The Council can't please everyone but it tries hard to satisfy competing demands for sporting fields, playgrounds, picnic facilities, event spaces, nature trails, bush regeneration, heritage protection, landscaped gardens, dog parks, bicycle and walking paths, public toilets, car parking (!) and more.

Don't be one of those people who just criticises when you see something you don't like. Be pro-active.

The Council is actively seeking your input now on a draft version of the Park Lands Management Strategy. If you wait until after the Management Strategy has been set and adopted by the Council, you will have missed your best chance to influence the way the Park Lands are managed.

The consultation period is open until 26 February.

<http://yoursay.adelaidecitycouncil.com/pl-mgmt-strat>

**BILL BRYSON ON OPEN SPACE AROUND CITIES**

Subscribe

Share ▼

Past Issues

Translate



You may have seen the recent movie "*A Walk In the Woods*" based upon the book of the same name by Bill Bryson.

Bryson is known for his humorous books on travel.

In his latest title "*The Road to Little Dribbling*" he takes aim at those in Britain (an economist, a planning consultant, two newspapers and others) who are campaigning to get rid of the 'Green Belts' on the outskirts of London and other cities, because they want to replace the greenery with more housing and other development.

Doesn't that sound familiar?

*"The one charge against the 'green belt' that has some foundation is that it keeps a lot of land off the market. Yes it does. That is actually the idea of it. But that land isn't sitting there doing nothing. It shelters wildlife, transpires oxygen, sequesters carbon and pollutants, grows food, provides quiet lanes for cycling and footpaths for walking, adds grace and tranquility to the landscape. It is already under enormous pressure. Fifty thousand houses have been built on green belt land in the last ten years. Sussex alone lost thirteen ancient woodlands to development in the same period, according to the Woodland Trust. We ought to be appalled to see this happening, not clamouring for more of it."*

What would Bill Bryson make of the current State Government's push to put many shiny new buildings onto Park Lands? It's not hard to guess. Bryson has been to Adelaide. In his book *In a Sunburnt Country* he says that Adelaide has:

*".....a dash of classiness and respectful venerability that Sydney and Melbourne all too often discarded for the sequined glitter of skyscrapers."*

*"Adelaide is the most overlooked of Australia's principal cities ... for it rarely makes the news or gets a mention in anyone's conversation. It is to Australia essentially what Australia is to the world — a place pleasantly regarded but far away and seldom thought about."*

*"Adelaide is unquestionably a lovely city. Everyone is agreed on that, including millions who have never been there."*

Thanks to Stephen Scammell for this suggested article.

### PARK LANDS ART PRIZE - FINALISTS TO BE NAMED SOON

The judges for the Adelaide Park Lands Art Prize (SA's richest art prize) have gone through an initial culling process. From the 200 entries received, the judges have decided which entries will be 'finalists' and hence on display later this year at the Festival Centre Artspace.

We can't yet reveal the names of the finalists. They'll be notified by email on 1 February (a few days later than the originally-advertised date of 28 January). From that date, their names will be published on the Art Prize web site: <http://www.parklandsart.com/>

We will also name the finalists in the February edition of this e-Gazette. The final judging and naming of winners will occur just prior to the official exhibition opening on 15 April.



[Subscribe](#)

[Share](#) ▼

[Past Issues](#)

[Translate](#)



Painting by David Kennett  
One of the finalists in the 2014 Adelaide Park Lands Art Prize.

**PHOTOS OF THE DAY**

Recent highlights



Subscribe

Share ▼

Past Issues

Translate



From the top:

- a) Ellis Park, Tampawardli (Park 24) off West Tce
- b) White-faced heron, Rundle Park / Kadlitpina (Park 13)
- c) Botanic Gardens, Tainmuntilla (Park 11)
- d) Narnungga (Park 25) off Port Rd
- e) Dog park, Ngampa Yarta (Park 5) off Le Fevre Rd

The Park Lands 'photo of the day' series has been running for almost 20 months, and **the collection of Park Lands photos now numbers more than 600**. We maintain (and gradually grow) 37 separate albums: one for each one of your 30 Parks, your six squares, and one album of Park Lands that have been lost, i.e. "Alienations"). To browse the photos follow the link below to '[Our photos on Flickr](#)'.



APPA on Facebook



@adelparklands



APPA website



Our photos on Flickr

Subscribe

Share ▼

Past Issues

Translate



Share



Tweet



Forward

Copyright © Adelaide Park Lands Preservation Association, Inc. [2015] All rights reserved.

[unsubscribe from this list](#) [update subscription preferences](#)

