

[Subscribe](#)[Share ▼](#)[Past Issues](#)[Translate](#)

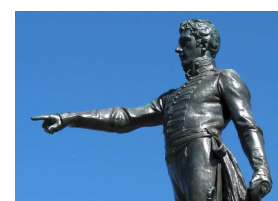
e-Gazette No. 011 - February, 2016. If this email doesn't look right, then:

[View this email in your browser](#)



In this e-Gazette....

- [CAR PARKING, CAFES, SPORTS HUBS - DEVELOPERS TO BE LET LOOSE?](#)
- [HOW THE SPORTS 'SUITS' ARE GETTING CONTROL OF YOUR PARKS](#)
- [SPORT AND BOOZE - COUNCIL SAYS GO FOR IT!](#)
- [RIVERBANK - FESTIVAL PLAZA SELLOUT](#)
- [WELCOME PARK LANDS VISITORS](#)
- [PARK LANDS ART PRIZE - FINALISTS NAMED](#)
- [CAN YOU SPARE AN HOUR A WEEK?](#)
- [PHOTOS OF THE DAY](#)



CAR PARKING, CAFES, SPORTS HUBS - DEVELOPERS TO BE LET LOOSE?

[Subscribe](#)[Share ▼](#)[Past Issues](#)[Translate](#)

Guess how many car parking spaces already exist on Adelaide's Park Lands?

We're not sure but it's at least 4,000 - and that's not counting the temporary parking that is permitted from time to time during special events like the Clipsal 500 and the Royal Adelaide Show.

4,000 car parks (or more) apparently is not enough. The [Draft Park Lands Management Strategy 2015-2025](#) proposes MANY more car parking spaces on Park Lands. But it's not all about car parks. The [Draft Park Lands Management Strategy](#) also wants seven new "sports hubs".

APPA is preparing a submission to the Park Lands Authority. Our submission is not yet finished - but here are the main points of what we'll say:

- Park Lands are meant to be well, you know, Parks! Gardens, trees, wetlands, water features, are parks. Buildings, fences, cafes, kiosks, car parks, plazas, etc are not parks. Each of these proposed new built things takes away a little bit more of the Park Lands.
- There are already enough sports facilities in the Park Lands to satisfy the demand for sport. There is a difference between buildings that help people play sports (toilets, shower facilities, change rooms etc) and other buildings for drinks, catering, entertainment etc. But the [Draft Park Lands Management Strategy](#) envisages seven new sports "hubs" that will do much more than just help people play sport on the Park Lands.
- Allowing more and more sporting groups to have 'function centres' on Park Lands is just privatisation of public land. It's transferring commercial catering opportunities out of the CBD and the suburbs and into the Park Lands.
- The [Draft Park Lands Management Strategy](#) envisages kiosks and cafes right throughout the Park Lands - as many as 19 of them in various places. Private profit from public Park Lands? We wonder how all cafes, restaurants and hotels in the CBD feel about lots of new competitors situated on public land.

Consultation on the [Draft Park Lands Management Strategy](#) closes on February 26th.

[Subscribe](#)[Share ▼](#)[Past Issues](#)[Translate](#)

Please support APPA and make your own submission to defend our Park Lands. Write your own submission, or copy and paste from the dot points above, and send them to: yoursay@adelaidecitycouncil.com no later than 26 February.

HOW THE SPORTS 'SUITS' ARE GETTING CONTROL OF YOUR PARKS



Consistent with what we're saying above, the [Adelaide Review](#) has unpacked how the State Government is on the verge of securing a de facto takeover of the Park Lands - ending more than 150 years of City Council control and turning the Park Lands into multiple profit-generating centres. You can't afford NOT to read this: **[Montefiore: Big Changes for Park Lands?](#)**

It goes behind the glossy document distributed by the Park Lands Authority and reveals who's really pulling the strings, and why.

SPORT AND BOOZE - COUNCIL SAYS GO FOR IT!

[Subscribe](#)[Share ▼](#)[Past Issues](#)[Translate](#)

London has a 'Pub on the Park'. It's literally a pub on the edge of 'London Fields' at Hackney.

Now it seems as though many of the sporting groups that use the Adelaide Park Lands could each have something similar. (OK, that's a slight exaggeration. But they have been given the go-ahead to seek and use liquor licences on the Park Lands.)

As we advised you in the [e-Gazette for December 2015](#), the Adelaide City Council has been looking at its 'Park Lands leasing and licensing policy' for sports clubs and commercial uses of the Park Lands.

On 27 January, the Council approved its new policy.

APPA welcomes sporting uses of the Park Lands. It's great to see so many people (approximately 1.7 million sporting visits per year) freely enjoying these great public spaces. However, we object to Park Lands lessees or licence holders getting permission to construct function centres that reduce the area of public open space. Out of 37 current sporting-group lease-holders, 16 of them have also liquor licences for their Park Lands premises.

If you want to hold a function for your sporting club, there are numerous City and near-City hotels and restaurants that can cater for you. It is inconsistent with the concept of a "park" that ever-growing portions of public space should be closed and locked exclusively for the benefit of any club's members or supporters. This one sprang up in 2014 on Warnpangga (Park 10) off MacKinnon Pde:

[Subscribe](#)[Share ▼](#)[Past Issues](#)[Translate](#)

Nor is it consistent with the concept of a "park" that private "function centres" cafes and kiosks should pop up in dozens of Park Lands places - even if they are run by sporting groups.

However the City Council does not see it that way. Its newly-adopted leasing and licensing policy for sporting clubs says:

to ensure the financial viability of sporting clubs, revenue generating activities will be permitted (subject to all associated approvals) including, but not limited to:

- *The operation of small scale cafes/kiosks to provide for participants, spectators and other Park Lands users*
- *Consideration will be given to the granting of limited liquor licenses to support the activities of the sporting organisation.*

Note that the catering may also be available for "other Park Lands users". In other words, sporting clubs can use the Park Lands to compete with cafes and function centres in the CBD.

Or they could hold temporary private functions, like the one below. Either way, Park Lands are being turned over to money-making. We are losing sight of the reasons that we have Park Lands.

Subscribe

Share ▼

Past Issues

Translate



'Financial sustainability' of our sporting clubs apparently requires this sort of thing (if they can't have a pub) on the Park Lands. Will you be invited?

RIVERBANK - FESTIVAL PLAZA SELLOUT



[Subscribe](#)[Share ▼](#)[Past Issues](#)[Translate](#)

These are artist's impressions of how the Festival Plaza will look after the multi-millionaires have had their way with the land. Many people seem unaware that the Festival Plaza is still gazetted as Park Lands.

APPA agrees that the current Festival Plaza is very uninviting and in need of improvement.

We think it would look great with irrigated gardens, trees, water features etc. But not with an office tower, shops, more concrete and a casino extension.



Public consultation on the Plaza re-design was open for the very minimum - a bare 15 days and has already closed. On the plans below, note the new buildings numbered 5, 11, and 12. They are the proposed new intrusions onto Park Lands.

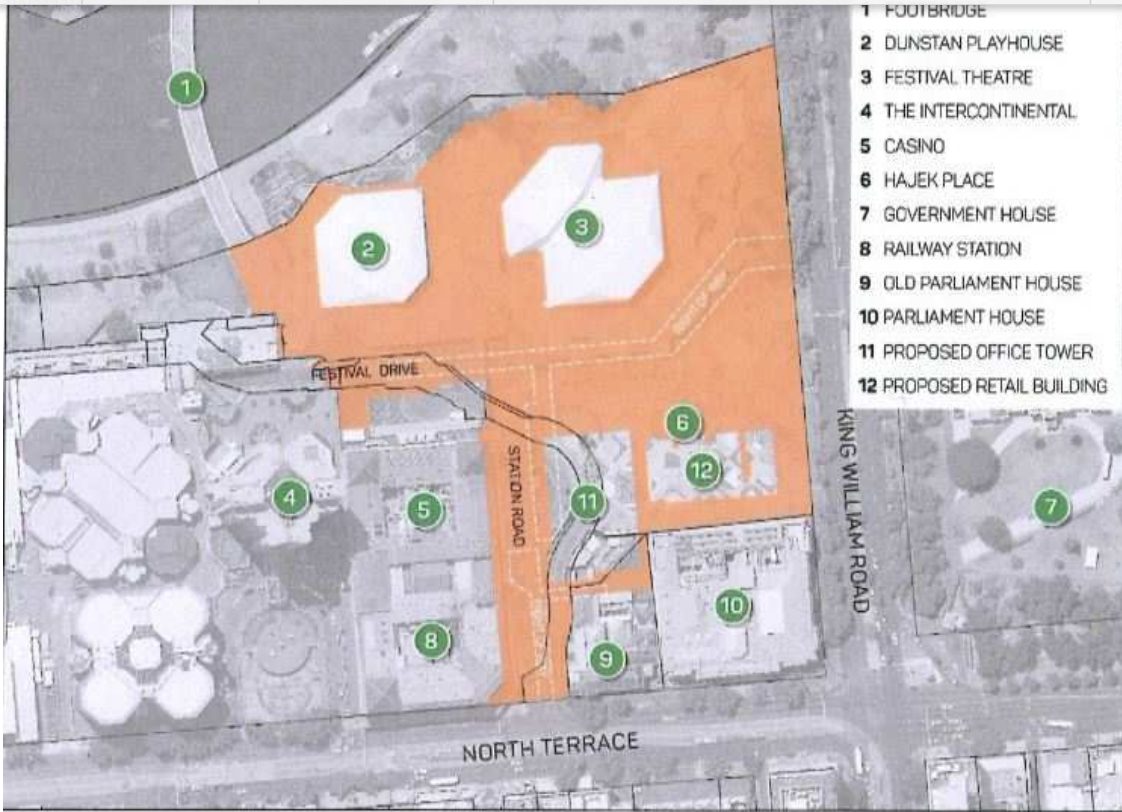
There will be a few token trees included - as you can see in the following picture. But this development, currently being "assessed" by the Government's hand-picked Development Assessment Commissioners, represents another lost opportunity to return Park Lands to, you know, Parks!

[Subscribe](#)

[Share](#) ▼

[Past Issues](#)

[Translate](#)



WELCOME PARK LANDS VISITORS

[Subscribe](#)[Share ▼](#)[Past Issues](#)[Translate](#)

It's that time of the year again, when temporary fences and temporary buildings block public access to large parts of the eastern Park Lands. It's a time when:

- Rundle Park/Kadlitpina (Park 13),
- Rymill Park/Murlawirrapurka (Park 14),
- Ityamai-itpina (Park 15) and
- Victoria Park/Pakapakanthi (Park 16)

are all transformed into festival playgrounds for these two events.

APPA members have mixed feelings about 'mad March'. On the one hand we love to see people enjoying themselves, and we're happy that the Park Lands are available for that enjoyment. We realise that although there will be damage to the vegetation, the Park Lands will recover, and none of the intrusions are permanent.

On the other hand, we object to the commercialisation and fencing of the Park Lands. Paying for entry to any public Park is alien to the very concept of a Park. One of APPA's key 'Objectives' is that *"the public, so far as practicable, has free and unrestricted access to the Park Lands."*

We are also disappointed that restrictions to the Park Lands last much longer than the duration of these two events. Parks are fenced off well beforehand, during the construction phase. Inevitably, we will hear the tired old refrain, that to reduce the duration of the restrictions, the motor racing people should be allowed to build a permanent grandstand in Victoria Park/Pakapakanthi.

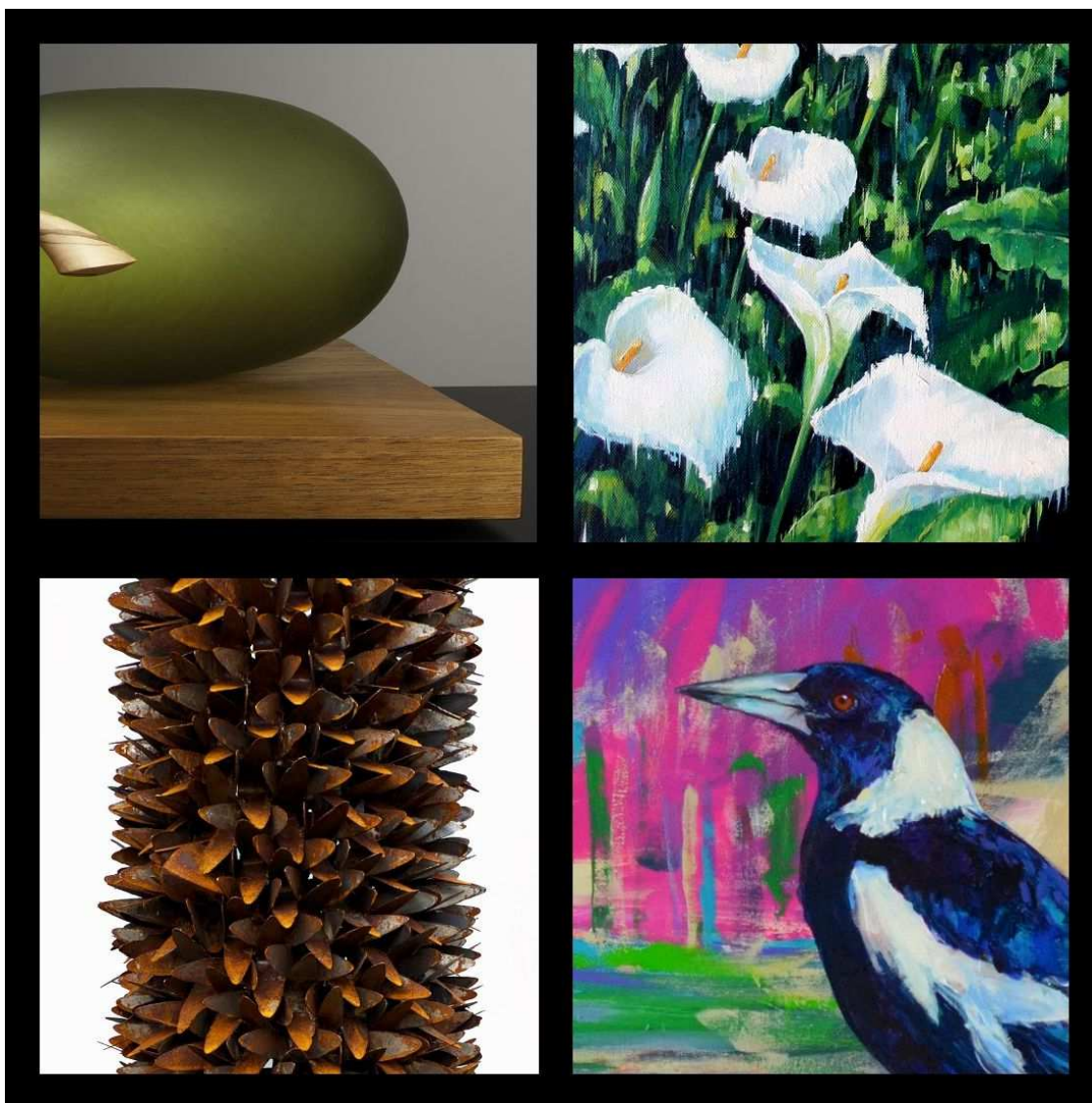
When you hear that demand trotted out yet again, just remember that there will be a time, in not-too-distant future, when motor racing is abandoned, only a memory. In that future time, we will hopefully still have Victoria Park/Pakapakanthi looking as it should, without the detritus of a long-forgotten temporary event dumped onto it.



[Subscribe](#)[Share ▼](#)[Past Issues](#)[Translate](#)

APPA extends a warm welcome to people visiting Adelaide's Park Lands in mad March. We encourage you to explore some of the other beautiful Adelaide Park Lands (the ones that aren't fenced off) during your stay.

PARK LANDS ART PRIZE - FINALISTS NAMED



Congratulations to the 53 artists (and their 59 art works) that have made it through the first round of judging for SA's richest Art Prize - the \$31,000 biennial Adelaide Park Lands Art Prize. <http://www.parklandsart.com/congratulations-finalists/>

With the very high standard of entries, gaining the nod as a finalist proved to be even more difficult this time than in the previous event back in 2014. Nevertheless, of the 53 artists who are now confirmed finalists, 16 of them were also finalists back in 2014.

We're not allowed to show you the finalists' art works. They're all under wraps until the final judging and opening of the exhibition at the Festival Centre Art Space on Friday 15 April - (invitation only). Then all 59 finalists will be on public display the following day and for six weeks thereafter.

[Subscribe](#)[Share ▼](#)[Past Issues](#)[Translate](#)

But we can show you some 'teasers'! What you see above are four partial glimpses: "detail" sections of four entirely different art works from four different finalists.

For more information about the competition and the exhibition, visit www.parklandsart.com

CAN YOU SPARE AN HOUR A WEEK?



We're glad that you're reading this e-Gazette. However, just reading it isn't really enough to help protect the Park Lands.

The next generation of South Australians needs you to step up and become part of a small, committed team. Here's a sample of tasks that you could help carry out, with support and encouragement from the APPA Committee.

- Agenda and Minutes secretary (only one meeting per month)
- Newsletter editor (2-person team, 1 edition per month)
- Social media (i.e. Facebook, Instagram, Twitter, Flickr) (2-person team)
- Website (2-person team)
- Park Lands photographer (3-person team)
- Networking with schools (We would love to have parents getting their children's teachers and classmates interested in Adelaide's unique heritage)
- Networking with the business community. CBD cafes and others should be alarmed at the new competitors about to spring up in the Park Lands
- Networking with community groups
- Social committee - organising an annual quiz night or other function (2-person team)
- Maintaining membership records (2-person team)
- Treasurer and assistant Treasurer (2-person team)
- Researcher - assisting the vice-president in drafting submissions.
- Google liaison - work with Google Maps to get Parks identified properly and photos uploaded
- Special projects co-ordinators (3-person team)
- Revenue sub-committee (3-person team)

If any of these roles (or other special talents of yours) could help APPA, then please email us **as soon as possible**: secretary@adelaide-parklands.asn.au

Subscribe

Share ▼

Past Issues

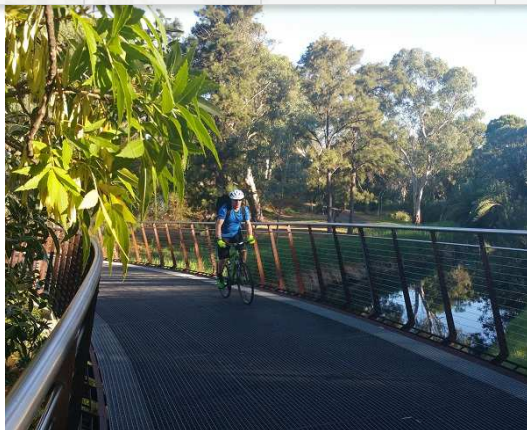
Translate

Positions on the APPA Committee are all declared vacant at the APPA Annual General Meeting in April. But don't wait until then. Anyone who's considering nominating for the Committee would love to know that you're prepared to support them with just a small amount of your time to help protect the Park Lands.

PHOTOS OF THE DAY

Recent highlights



[Subscribe](#)[Share ▼](#)[Past Issues](#)[Translate](#)

From the top:

- a) Walyu Yarta Community Garden (Park 21) just south of Veale Gardens
- b) Adelaide Bowling Club, Rymill Park / Murlawirrpurka (Park 14) off Dequetteville Tce
- c) Bottle brush/Calistemon, Ityamai-itypina (Park 15) off Wakefield Rd
- d) Torrens bridge linking Warnpangga (Park 10) and Tainmuntilla (Park 11) between Hackney Rd & Frome Rd e) Morning walkers, Nantu Wama (Park 6) off Le Fevre Tce

The Park Lands 'photo of the day' series has been running for more than 20 months, and **the collection of Park Lands photos now numbers more than 630**. We maintain (and gradually grow) 37 separate albums for each one of our 30 Parks, six squares (and one album for 'Alienations'). To browse the photos follow the link below to '[Our photos on Flickr](#)'.



APPA on Facebook



@adelparklands



APPA website



Our photos on Flickr



Share



Tweet



Forward

Copyright © Adelaide Park Lands Preservation Association, Inc. [2015] All rights reserved.

[unsubscribe from this list](#) [update subscription preferences](#)

MailChimp