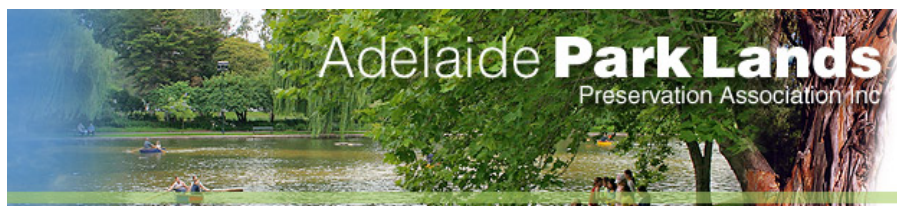


e-Gazette No. 033 - December, 2017 If this email doesn't look right  
(e.g. if there are no pictures) then:

[View this email in your browser](#)



## In this e-Gazette....

- [COUNCIL HANDS OUT \\$6 MILLION IN FREE PARK LANDS CAR PARKING](#)
- [GET OUT OF OUR WAY - WE WANT TO RAM THIS THROUGH](#)
- [PARK LANDS ART PRIZE - ENTRIES NOW OPEN](#)
- [A 'CONCEPT PLAN' TO ENCOURAGE MORE USE OF NORTHERN PARK LANDS](#)
- [WHAT'S ON IN THE PARK LANDS OVER CHRISTMAS - NEW YEAR](#)
- [PARK VIDEO OF THE MONTH - LEFEVRE PARK / NANTU WAMA \(PARK 6\)](#)
- [A CELEBRATION OF 'EXTREME INCOMPETENCE' IN PLANNING](#)
- [GIVE THE GIFT OF APPA MEMBERSHIP](#)
- [HARD SURFACING OF PARK 22](#)
- [BRIEFLY, IN OTHER PARK LANDS NEWS](#)
- [PHOTOS OF THE DAY - RECENT HIGHLIGHTS](#)



### COUNCIL HANDS OUT \$6 MILLION IN FREE PARK LANDS CAR PARKING



The Adelaide City Council has dished out a huge windfall – 30 'golden tickets' worth at least \$150,000 each – to players and officials at two lucky sporting clubs.

As part of the SA Cricket Association's \$8 million re-development of Gladys Elphick Park / Narnungga (Park 25) opposite the new Royal Adelaide Hospital, the Council is allowing an

Subscribe

Past Issues

Translate ▾

RSS 

expansion of car parking within the Park.  
intended to be available for city workers, nor for patients and staff at the RAH. The new RAH itself has 2,300 car parking spaces, but that's another story entirely.

Commercial parking in the west end of Adelaide is expensive. The commercial car park nearest to the new RAH (in Newmarket Street) charges \$5 for half an hour, or \$18.00 for ten hours. But if you don't want to pay those rates, and you can get into one of the 158 car parking spaces in the Park Lands on the other side of West Terrace, you will be able to park for up to three hours - no charge.

Not all of those 158 spaces will be available to the public, however. At its meeting on 28 November 2017, the City Council decided that:

**"Thirty (30) 'Permit At All Times' spaces will be provided in the Southern car park for SACA/St Ignatians' players/officials and ground staff."**

The holders of these permits therefore will be able to park, just off West Terrace, at any or all hours, as long as they retain the permit. The permits are not restricted to any sporting event at the Park. They are really "golden tickets" for free parking on Park Lands.

Judging by the commercial rate for long-term parking in Newmarket Street, near the corner of North Tce and West Tce (a minimum \$450 per month at present) each one of these permits would be conservatively valued at \$5,000 per year, or \$210,000 over the length of the 42-year Park Lands lease.

The combined value of all 30 permits, therefore, exceeds \$150,000 per year, or \$6.3 million over the 42-year lease.

This decision seems to fly in the face of the Adelaide Park Lands Management strategy which relevantly promises that the Council will:

**"Provide car parking on and adjacent to the Park Lands only where need has been demonstrated and no reasonable alternative exists."**



There is a precedent for this. Players and officials at the Adelaide Bowling Club (in Rymill Park) have a similar deal, with 20 free 'golden tickets' available for their use. A small number of other Park Lands lessees are restricted to four or fewer car parking spaces.

There are many thousands of car parking spaces within the Adelaide Park Lands, but the demand keeps on growing, and the City Council seems all too willing to bow to the demand.

Fortunately the Council is trying to reduce the extent of car parking allowed in Josie Agius Park / Wikaparntu Wirra (Park 22) where the netball courts are currently being resurfaced. But the reduction might not succeed. See the story later in this newsletter: "Hard Surfacing of Park 22".



**GET OUT OF OUR WAY - WE WANT TO RAM THIS THROUGH**

[Subscribe](#)[Past Issues](#)[Translate](#) ▾[RSS](#) 📡

There are worrying signs that the current State Government has learned no recent lessons about the value of the Adelaide Park Lands.

Apparently the Government is not yet finished obliterating what little remains of Park 27 between North Terrace and the River Torrens.

In addition to the new Royal Adelaide Hospital, the (cheese-grater) SAHMRI building, and new multi-storey towers for both Uni SA and Adelaide University (all built over Park 27) the Government is now eyeing off a site next to the Morphett street bridge. Ironically this is the same site that the City Council wants for a commercial joyflight helipad.

But the State Government does NOT want the Council getting in the way of its latest plans.

The chief State bureaucrat in charge of corporatising the Park Lands says the Council should have NO say in what gets built on the Torrens Riverbank:

<https://indaily.com.au/news/2017/11/23/strip-petulant-city-council-riverbank-powers-authority-boss/>

Urban Development Minister Stephen Mullighan is sympathetic to that view.

Meanwhile, Investment and Trade Minister Martin Hamilton-Smith is brazenly offering international investors the opportunity to take away yet another part of your Park Lands heritage. All they need to do, he says, is stump up enough money for a suitably large commercial hotel, such as the artist's impression above.

It is astounding that the current crop of State politicians seem incapable of resisting the urge to continually steal Park Lands from future generations, so they can hand over the land to commercial private interests. The [News Release from the Minister](#) fails to even acknowledge that this land is held on trust for the public of South Australia, and subject to the *Adelaide Park Lands Act 2005*.

The State election will intervene (next March) before anything is likely to come of this proposal. APPA will be surveying all political candidates in the leadup to the State election to get their views on the Park Lands. We will, of course, let you know well before the election, how candidates respond to proposed Park Lands thefts such as this one.



If this is NOT what you want for your Park Lands, then  
Take Action now:

<http://www.adelaide-parklands.asn.au/take-action/>

One way you can take action is to make a personal protest to the Minister. Feel free to copy and paste from the text below and send your message to Minister Hamilton-Smith:

[OfficeofMinister.Hamilton-Smith@sa.gov.au](mailto:OfficeofMinister.Hamilton-Smith@sa.gov.au)

Dear Mr Hamilton-Smith

The Adelaide Park Lands are NOT available for commercial developers. They are held on trust for the people of South Australia.

Please keep your hands off them and tell potential hotel developers to look at commercial land in the CBD instead.

Subscribe

Past Issues

Translate ▾

RSS 



August 2014



November 2017

photos: Aussie Kanck



The institutionalised takeover of North Terrace over the past seven years. Is a hotel going to be squeezed onto what's left of Park 27?



Share



Tweet



Forward

### PARK LANDS ART PRIZE - ENTRIES NOW OPEN



Entries are now open for the Adelaide Park Lands Art Prize.

Winners will share in \$33,000 prize money.

- \$20,000 First Prize
- \$2,000 APPA Young Artist Prize
- 10x \$1,000 Highly Commended Prizes; and
- \$1,000 Royal Adelaide Show People's Choice Prize

A great opportunity for all artists

Finalists shown at Adelaide Festival Centre July 2018. All Artwork will be for sale.

To enter and for all details go to: [www.parklandsart.com](http://www.parklandsart.com)

Subscribe

Past Issues

APPA gratefully thank all our sponsors:

Translate

RSS



BENTLEYS Paul Mazzachi  
BK Partners Chartered Accountants  
Hamish Ramsay

Hugh & Fiona Maclachlan  
The Maras Group  
Ian Gilfillan

John Phillips  
Katrina Ramsay  
Koppamurra Wines  
Lyn Pederson

Peter Grope  
Rann Communications  
Stephan & Vicki Mavrakis

Sponsors listed are those at time of publishing.

Design: Alecia Kral Website: Brook Gerard

Entries will close on 1 May 2018.

Ask questions or Join the conversation about the Adelaide Park Lands Art Prize on Facebook: <https://www.facebook.com/events/133701167346564/>



### A 'CONCEPT PLAN' TO ENCOURAGE MORE USE OF NORTHERN PARK LANDS



The Adelaide City Council has signed off on the first stage of what is intended to be a suite of new facilities in Denise Norton Park / Pardipardinyilla (Park 2) and Yam Daisy Park / Kantarilla (Park 3) linking Prospect with North Adelaide.

The project has not yet been funded, but it's likely that the State Government will join with the City Council in funding a large part of the initial \$5 million first stage.



This is an artist's impression of how the area in front of the Aquatic Centre might look after "Stage 1" under which the 'Bush Magic Playspace' would be expanded and linked to a 'central plaza' and the proposed "promenade".



The curved green line is the intended route of the "promenade" from Braund Rd Fitzroy to O'Connell Street North Adelaide.

There's already a path there of course.... as you can see in the picture below.

Subscribe

Past Issues

Translate ▾

RSS



But the new project includes improved edging, lighting, landscaping, and the eastern side of the Aquatic Centre to Fitzroy Terrace.

The bill is expected to be \$5 million - and remember this is just "Stage 1".

SO what's around the corner for Stages 2 and 3?

The City Council has not approved any more than Stage 1.

Stage 2 (tentatively costed at \$3 million) is described as:

- Picnic and discovery play
- Community activity hub
- Park Lands Trail enhancement
- Woodland park in Yam Daisy Park / Kantarilla (Park 3)

Stage 2 would require joint funding from the State Government, and the City of Prospect.

\*\*\*\*\*

Stage 3 (also tentatively costed at \$3 million) is described as:

- Multi-use community sports building
- Oval lighting

Stage 3 would require some financial contribution from Blackfriars Priory School, which has been granted approval to renew its licences over the existing sports fields and buildings in Denise Norton Park / Pardipardinyilla (Park 2).

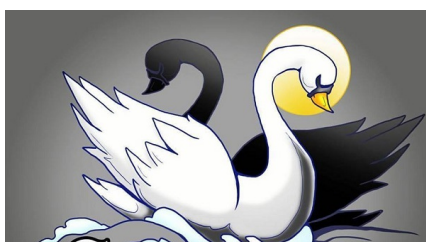
 Share
  Tweet
  Forward

### WHAT'S ON IN THE PARK LANDS OVER CHRISTMAS - NEW YEAR

The Christmas-New Year period features more Park Lands events than most other times of the year. Even when there's nothing scheduled, just being in the Park Lands will get you a little cooler than any site in the "heat island" of the CBD!

The City Council continually updates its list of 'what's on'.  
<http://www.adelaidecitycouncil.com/whats-on/category/park-lands>

Some things you might like to try over coming days or weeks include:



[Swan Lake Remixed](#) - Veale Gardens - two performances only. Fri 15 Dec 6pm and Sat 16 Dec 5pm. FREE. An "immersive outdoor dance experience" modernised version (condensed to one hour) of Swan Lake. Food trucks and stalls open 30 minutes before each performance. <https://www.facebook.com/events/155054938438620>



[Christmas Fun in the Square](#). Now, until Dec 24. 11am to 8pm daily Victoria Square/Tarntanyangga. Free live music, amusement rides, games, food trucks, children's Xmas craft workshops, and short, family-friendly performances by jugglers, acrobats, comedians and magicians. For details, [follow the link](#).

[Christmas in Light Square](#). Sunday 17 Dec 11am to 4pm. Music and live entertainment, kids rides including ferris wheel, waterslides and

[Subscribe](#)[Past Issues](#)[Translate](#) ▾[RSS](#) 📡

jumping castle, face painting and glitter tattoos, roving characters, stalls for Xmas gifts, food, drinks and the ever-popular 'tree of hope' – a location to leave gifts and unperishable food for those in need.

#### [Moonlight cinema](#) – Plane Tree Drive, Botanic Park

Tuesday to Sundays, now through to 18 February.

Watch a movie under the stars in Australia's most iconic inner-city green space.

BYO licence, dog friendly, disability access.

For schedule and bookings, see

[www.moonlight.com.au/adelaide](http://www.moonlight.com.au/adelaide)

#### [Wild Imagination – School Holiday Nature Play Program](#)

Jan 14 to 27, 2018, Victoria Park / Pakapakanthi (Park 16) corner of East Terrace and Halifax Streets. For kids of all ages,

includes water play, mud play, nature crafts, bush cubby building and more. Not free.

Bookings essential. [Follow the link.](#)

#### [School Holidays at Adelaide Botanic Garden.](#)

15–25 January

A range of activities, suitable for 5–13 year-olds, (e.g. 'Botanic Art framed' 'Dreaming Story Telling' and 'Garden Critters') ranging from FREE to \$30. Sessions 60 to 90 minutes. Bookings essential. [Follow the link.](#)

#### [Urban Beach.](#) Pinky Flat, Tarntanya Wama (Park 26) 8am to 10pm every day until 28 January

Summer food, kids' water play, beach cricket, beach volleyball, netball or badminton, totem tennis, Frisbee golf, bocce, yoga and pilates classes, or simply relax & read on a beach chair. [Follow the link.](#)

#### [New Years Eve Party. Elder Park, Tarntanya Wama \(Park 26\)](#)

Live music, fabulous food, children's entertainment and of course, spectacular fireworks. The historic Rotunda will be bathed in light and providing a focal point for the live music. The night sky will light up with two rounds of show-stopping fireworks. More details [at this link.](#)

### GUIDED WALKS CONTINUING IN 2018

The first seven months of APPA's Guided Walks through various parts of the Park Lands has been judged a success and the program will continue in 2018, with one walk scheduled each month.

APPA's Park Ambassadors each seemed to have enjoyed taking their opportunity to showcase their own favourite part of the Park Lands.

Each walk is free for APPA members, and a gold coin donation is requested for others. Children and dogs are most welcome.

The next guided walk is scheduled for Saturday 20 January at 9.30am in Blue Gum Park / Kurangga (Park 20). We'll meet at the corner of Greenhill Rd and Unley Rd at 9,30am for a walk of about 90 minutes.

See the full schedule here: <http://www.adelaide-parklands.asn.au/guided-walks/>



Subscribe

Past Issues

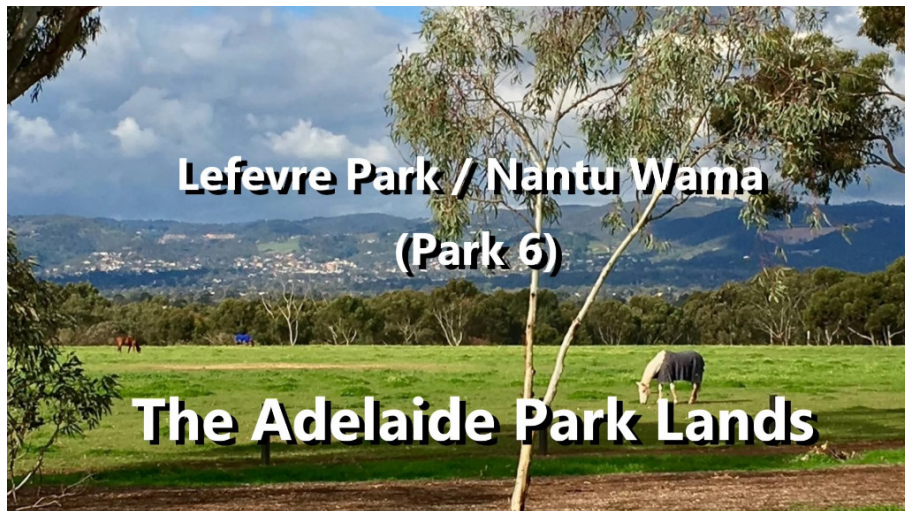
Translate ▾

RSS 📡



Park Ambassador Rosemary Luke leading the most recent of APPA's Guided Walks on Saturday 10 December through Bunday's Paddock / Tidlangga (Park 9)

**PARK VIDEO OF THE MONTH - LEFEVRE PARK / NANTU WAMA (PARK 6)**



Click on the picture above, to spend three minutes, in the comfort of your armchair, exploring what most people call "the horse park".

It might inspire you to wander through this Park one day.

If you missed our earlier videos (Park 1 through to Park 5) catch up on them at our YouTube channel: [https://www.youtube.com/channel/UCBBBQLY6as\\_sQv0BoQm69Rw/videos](https://www.youtube.com/channel/UCBBBQLY6as_sQv0BoQm69Rw/videos)



Share



Tweet



Forward

**A CELEBRATION OF 'EXTREME INCOMPETENCE' IN PLANNING**



[Subscribe](#)[Past Issues](#)[Translate](#) ▾[RSS](#) 📡

On Sunday 10 December, the State Government hosted a celebration in Rymill Park inviting the public to walk through the "tunnel" (i.e. the covered trench) that had been under construction for the previous 20 months.

APPA boycotted the "celebrations". We were not surprised however, that the Government would celebrate its obvious disdain for the national-heritage listed Adelaide Park Lands.

Disregarding public opposition throughout 2015, and appeals from regional SA that there were much higher priorities for transport, the SA Government nevertheless cut down scores of trees, (including some more than a century old) for a purported marginal improvement in bus timetables.

Documents obtained through a Freedom of Information Request reveal that at no stage did the Government consider any alternative route or road design to achieve the same purpose of improving public transport outcomes.

The O-Bahn covered trench has been independently described (by the Australian Civic Trust) as "extreme incompetence in planning" and "an easily avoidable disaster". The Civic Trust concluded in 2016 that the goal of improved bus scheduling "could have been achieved by alternative means at a fraction of the environmental disturbance, nuisance and cost."

See: <http://www.civictrust.net.au/2016%20Review.pdf>

\$160 million of taxpayer funds has been spent and it is not clear what budget, if any, has been reserved for remediation. No amount of subsequent landscaping will restore the previously-tranquil surrounds of Rymill Park lake, a jewel in the crown of Adelaide's Park Lands.

Nick Xenophon has also had some harsh words to say about this use of taxpayers money: <http://www.abc.net.au/news/2017-12-12/nick-xenophon-blasts-o-bahn-extension/9249420>



Share



Tweet



Forward

**GIVE THE GIFT OF APPA MEMBERSHIP**

Subscribe

Past Issues

Translate ▾

RSS



For a last-minute Christmas gift – why not enrol your family or best friend as a member of APPA?

A financial member of APPA gets:

- the priceless satisfaction of supporting APPA's work;
- free participation in our [monthly guided Park Lands walks](#);
- eligibility to become a Park Ambassador and lead an annual [guided walk through one Park](#);
- discounted tickets to our supporters movie events (last one was on Sun 13 August – others to be arranged);
- the responsibility to help guide APPA's activities through the Annual General meeting; and
- a printable PDF membership certificate (see above).

Full details on our 'membership' page: <http://www.adelaide-parklands.asn.au/membership/>



Share



Tweet



Forward

## HARD SURFACING OF PARK 22



Work is well under way to resurface the existing netball courts in Josie Agius Park / Wikaparntu Wirra (Park 22) and add lighting.

What hasn't been well known, until now, is that the netball courts are expanding. After the resurfacing there will be 24 courts, rather than the existing 20. What's more the courts will be resurfaced in a colour described as "ochre" so that corellas don't mistake it for grass.

Meanwhile, talks are under way between the City Council, the Church Netball Association, and the Burnside and Adelaide Hockey Clubs about a new shared-used sports building and the extent of car parking. Current proposals are for 580 car parks, down from the 800 allocated for parking during the Royal Show each year. The Show Society has objected.

The Council has also approved, in principle, the construction of two artificial-surface hockey pitches in the same Park. See below.

[Subscribe](#)[Past Issues](#)[Translate](#) ▾[RSS](#) 📡

With a new, larger sports building, 24 hard-surface netball courts, two hard-surface hockey pitches, and 580 car parking spaces, as above, APPA fears that there will be very little natural surface remaining in Josie Agius Park / Wikaparntu Wirra (Park 22)



Share

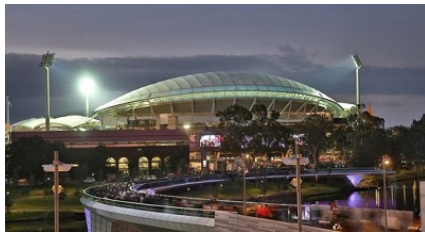


Tweet



Forward to Friend

### BRIEFLY, IN OTHER PARK LANDS NEWS



The City Council was due to hold a special extra meeting on Wednesday 13 December to discuss an amended liquor licensing application by the Adelaide Oval Stadium Management Authority. However, the meeting was cancelled because too few Councillors turned up. See [the story in InDaily](#).



APPA is still waiting for a reply to the letter we sent last month to the Lord Mayor, Martin Haese, about the multiple failings in the Council's processes, in trying to get a commercial helipad within the Park Lands.

You can [read our letter here](#). We'll let you know in the *e-Gazette* after a reply arrives.

A proposal for a green amphitheatre on the edge of Botanic Park highlighted [in our November e-Gazette](#) has now received funding through the State Government's

Subscribe

Past Issues

"Fund My Neighborhood" program.

Translate ▾

RSS 📡



The proposed project received 171 votes from community members and [\\$140,000 has been allocated.](#)

PHOTOS OF THE DAY - RECENT HIGHLIGHTS



From the top:  
a) Blossom in Brougham Gardens / Tantutittinga (Park 29)  
b) Swans and cygnets on the Torrens river bank, Mistletoe Park / Tainumutilla (Park 11)

Subscribe

Past Issues

c) Stumps drawn at Bone Timber Reserve, Kingston Park / Wirraninthei (Park 23)  
d) Maintenance rounds in Whitmore Square / Iparrityi  
e) Soccer game in Pelzer Park / Pityarilla (Park 19)

Translate ▾

RSS 

The Park Lands 'photo of the day' series has been running since May 2014, and the collection of Park Lands photos now numbers well over 1,300. We maintain (and gradually grow) separate albums for each one of our 30 Parks, six squares (and additional albums for different types of 'Alienations'). To browse the photos follow the link below to '[Our photos on Flickr](#)'.



APPA on Facebook



@adelparklands



APPA website



Our photos on Flickr



Share



Tweet



Forward

Copyright © Adelaide Park Lands Preservation Association, Inc. [2015] All rights reserved.

[unsubscribe from this list](#) [update subscription preferences](#)

