

[Subscribe](#)[Past Issues](#)[Translate](#) ▼[RSS](#) 📡

e-Gazette No. 053 – August, 2019

If this email is not displaying properly (e.g. if it's truncated or there are no pictures or videos) then click to [view this email in your browser](#)

TREES MARKED FOR THE CHOP



In this newsletter:

- [TREES MARKED FOR THE CHOP](#)
- [DELIVERING THE COUP DE GRACE](#)
- [ART PRIZE 2020 - ENTRIES NOW OPEN](#)
- [A DUMMIES GUIDE TO PARK LANDS](#)
- [CROWS AMBIT CLAIM - CALM BEFORE THE STORM](#)
- [HOTEL GLUT BUT NO BACKTRACK](#)
- [GOV'T BOWS AGAIN TO STADIUM AUTHORITY](#)
- [WHAT'S ON IN THE PARK LANDS](#)
- [EXPRESSIONS OF INTEREST FOR RECREATION FACILITIES](#)
- [BRIEFLY, IN OTHER PARK LANDS NEWS](#)
- [WHAT CAN YOU DO TO HELP?](#)
- [PHOTOS OF THE DAY - RECENT HIGHLIGHTS](#)

DELIVERING THE COUP DE GRACE

Subscribe

Past Issues

Translate ▾

RSS 📡



coup de grâce

/ˌkuː də ˈgrɑːs, French ku də ɡʁas/

noun

a final blow or shot given to kill a wounded person or animal.

Renewal SA, the State Government's land development agency, is preparing to deliver a coup de grace to the last inconvenient trees that stand in the way of its plans to build over what it calls "Lot Fourteen" – the former Royal Adelaide Hospital site in [Park 11](#).

A City Council Committee will debate next Tuesday evening a request from Renewal SA to remove ten English elm trees and one plane tree from the footpath on North Terrace.

See [the full story in Adelaide's on-line newspaper InDaily](#).

In a way, it would be a fitting epilogue to the State Government's disavowal of the site's status as part of the Adelaide Park Lands.

The use of the term "Lot Fourteen" to describe this part of [Park 11](#) is a denial of the legal reality. The State Government, like its predecessor, has flagrantly ignored a legislative obligation (section 23 of the [Adelaide Park Lands Act](#)) to prepare a report on how the former RAH site could be returned to Park Lands.

Subscribe

Past Issues

Steps regarding change in intended use of land

Translate

RSS

- (1) If land within the Adelaide Park Lands occupied by the Crown or a State authority is no longer required for any of its existing uses, the Minister must ensure that a report concerning the State Government's position on the future use and status of the land is prepared within the prescribed period.
- (2) A report under subsection (1) must include information on the condition of the land and on the action (if any) that would be required in order to make the land suitable for public use as park lands.

The State Government's continuing refusal to produce such a report is either incompetence or arrogance, if not both.

Adelaide had a once-in-a-generation opportunity to restore a long-lost part of its world-unique heritage, but this has been scuppered in favour of short-term commercialism. Once a Park, then a hospital, this priceless seven hectares is now a development site like any other. It is no surprise that the last shred of a Park - a few trees in a footpath - are perceived, like the rest of the site, as obstacles to further commercialisation of public land.



This picture represents the State Government's failure of vision; just large new buildings jam-packed onto Park Lands.

The battle has been lost and now there are only two questions remaining:

- 1. When, if ever, will the State Government actually obey its own law and produce a report on how the old RAH site could be returned to Park Lands? and
- 2. Will the City Council resist this coup de grace?

Read about the battle for this site at www.adelaide-parklands.asn.au/oldrah

You can attend the Council's committee meeting next Tuesday (20 August) from 6pm at the Town Hall to show your support for these 11 trees. Despite our campaigning over the past several years it would appear to be too late to achieve the return of any Park Lands to the former RAH site.

 Share
  Tweet
  Forward

ART PRIZE 2020 - ENTRIES NOW OPEN



[Subscribe](#)
[Past Issues](#)
[Translate](#)
[RSS](#)


This is our Video of the Month for August.

The Adelaide Park Lands Art Prize is a non-acquisitive art prize open to all artists of any age, working in any media or style – with the aim of making a statement or capturing the essence of the Park Lands.

Entries are open now and will close on 31 January 2020, with judging soon afterwards and an exhibition of finalists from 1 April to 31 May 2020 at the Festival Centre.

Next month's Park Lands video will feature G.S. Kingston Park / Wirrarninthe ([Park 23](#))



Share



Tweet



Forward

A DUMMIES GUIDE TO PARK LANDS



Some people say that the only measure of success of the Park Lands is how many people are using them at any one time.

However, that is a very narrow view of the benefit of Park Lands.

The Adelaide Park Lands fulfill multiple purposes:

Subscribe

Past Issues

Sport ✓

Gardens

Translate ▾

RSS 📡



Bush ✓



Playgrounds ✓



Events ✓

These are Parks



All of the uses above are consistent with the nature of a "Park". There is room for disagreement about the ideal balance – and which of these uses should apply in any given spot. That's the purpose of the Adelaide Park Lands Management Strategy. It tries to balance these uses.



Schools ✗



Businesses ✗



Hotels ✗



Car parks ✗



Dumps ✗

These are not



Some of the above uses might bring more people into the Park Lands, but at the cost

[Subscribe](#)[Past Issues](#)

of losing the "Park" quality of the site. They are park losses.

[Translate](#) ▾[RSS](#) 📡

Great swathes of the Adelaide Park Lands have been lost over successive generations, to land uses such as these – uses that are plainly not consistent with the nature of a Park.

After each loss has occurred, people tend to forget (or never learn) that the land was once Park Lands.

Because these types of land uses are not consistent with the nature of a Park, they effectively destroy the Park – each one destroying a part of something world-unique – the precious garland that surrounds the world's only City In a Park.

We love to see people using the Park Lands but putting lots of people into them is not a goal in itself.

Otherwise we might as well have all Parks looking like this:



Share



Tweet



Forward

CROWS AMBIT CLAIM – CALM BEFORE THE STORM



There's an eerie quiet about plans by the Adelaide Football Club to erect a multi-storey administration building, on top of a swimming pool, in Denise Norton Park / Pardipardinyilla ([Park 2](#))

The City Council is determined not to consult the public until after it receives the Crows detailed plans and glossy brochures. The Council (and the Adelaide Football Club) both seem to be operating under an assumption that when people see an artist's impression of a beautiful landscaped building, opposition to their plans might fade away.

The plans are still on the drawing board, while closed-door talks continue between the football club and council management.

The Crows CEO Andrew Fagan has recently visited Perth to inspect \$109 million facilities newly-constructed for the Fremantle Football Club at suburban Cockburn Central:

[Subscribe](#)[Past Issues](#)[Translate](#) ▼[RSS](#) 📡

We can expect something like this to be proposed here, for [Park 2](#).

The Adelaide City Council is insisting that it cannot have a larger footprint than the Aquatic Centre, so it would have to be a multi-storey building rather than spread out on a broad footprint as the Fremantle Club has done.

APPA's view is that the Council has failed in its duty to consider other options for its troubled Aquatic Centre. In addition, the Council is ignoring its own Community Land Management Plan by even contemplating a commercial takeover of some of Adelaide's crown jewels.

Subscribe

Past Issues

Translate ▾

RSS 📡



After all, when someone offers to relieve you of some of your jewels, you don't ask for a detailed submission on how they plan to go about it.

Letters and emails are most effective when they are personally written, not merely copied and pasted. But if you're time poor, we've provided (below) a very succinct message that you can use (or improve upon) to send to one or more of the seven Adelaide City Councillors who have supported the current strategy.



At a minimum here's what you might wish to say to each of them:

"The world-unique and National Heritage-listed Adelaide Park Lands are not the appropriate venue for any corporate headquarters nor professional sport training facility. Please ensure that the Adelaide Crows locate their proposed headquarters and administration at a suburban football ground, or on land that is zoned commercial. Such a building does not belong on the irreplaceable Adelaide Park Lands. The Park Lands are held on trust for the public, not for corporations."

Here are relevant email addresses:

- a.abrahamzadeh@cityofadelaide.com.au
- f.knoll@cityofadelaide.com.au
- m.couros@cityofadelaide.com.au
- h.abiad@cityofadelaide.com.au

Subscribe

Past Issues

s.hou@cityofadelaide.com.au
 s.hou@cityofadelaide.com.au
 s.hou@cityofadelaide.com.au

Translate ▾

RSS

Not forgetting of course, a similar message to the Adelaide Football Club CEO, Andrew Fagan (pictured):

crows@afc.com.au



Find out more at

www.adelaide-parklands.asn.au/crows



Share



Tweet



Forward

HOTEL GLUT - BUT NO BACKTRACK



The State Government has been warned that Adelaide faces a glut of empty hotel rooms.

The Australian Hotels Association has estimated up to 4,000 new hotel rooms could be built in Adelaide over the next five years, with 21 luxury hotel developments either confirmed or on the cards for the city.

Read the full InDaily [article](#).

Three of those hotels are either planned for, or are under construction on Park Lands sites.

- The Sky City Hotel currently under construction on Festival Plaza,
- another at Adelaide Oval (both in [Park 26](#))
- and the third on the former RAH site, misleadingly re-named "Lot Fourteen" in [Park 11](#).

...of hotels might give the Government food for thought about the taxpayer funds they are risking on the questionable Oval Hotel project. But there are no signs yet of a re-think, as the Government seems to be in the thrall of the State Management Authority. See the story below.

You can read more about the Adelaide Oval hotel issue at www.adelaide-parklands.asn.au/oval-hotel

See the other current threats to Park Lands at www.adelaide-parklands.asn.au/current-issues



GOV'T BOWS AGAIN TO STADIUM AUTHORITY



There are many disturbing and questionable legal issues about the State Government's decision to allow a hotel to be built at Adelaide Oval in Tarntanya Wama ([Park 26](#)).

[Despite our advocacy](#) to protect [Park 26](#) from this inappropriate commercialisation, hotel construction is due to start within the next few weeks.

Just one of the disturbing parts of this saga, is that before making a commitment to allow this, and risk \$42 million of taxpayers money, the Government sought no advice from the public nor any stakeholders other than its mates in the Stadium Management Authority.

Both the Government and the SMA kept their dealings entirely secret, even from the landlord the Adelaide City Council, until the hotel was announced as a done deal in November 2018, and rushed through the formal planning process in merely nine days.

In recent days, there's been another example of how the Government is obviously beholden to, or entirely captured by the eight men who constitute the powerful Stadium Management Authority.



WOMEN'S WORLD CUP

The State Government did not contact the Crows, Port Adelaide or the AFL before ruling out Adelaide Oval as a venue for Australia's Women's Soccer World Cup bid, instead relying on "representations" from the Stadium Management Authority that staging the event in the city would be a commercial "disaster" for the SMA.

[Subscribe](#)[Past Issues](#)[Translate](#) ▾[RSS](#) 📡

Government Minister David Ridgway (pictured) even went so publicly claim, falsely, that the Government would be under some duty to pay compensation to the Stadium Management Authority if the Authority did not get its way.



<https://indaily.com.au/news/local/2019/08/14/government-caught-out-on-adelaide-oval-compo/>

This represents more evidence that the Government is far too close to the Stadium Management Authority, too reliant on its advice alone, rather than listening to the public.

Nowhere is this more evident than its approval to allow a commercial hotel to leech off a sporting stadium in the heart of the world-unique, National Heritage-listed Adelaide Park Lands.

<http://www.adelaide-parklands.asn.au/oval-hotel>



Share



Tweet



Forward

WHAT'S ON IN THE PARK LANDS

There are always events scheduled in the Park Lands, many of them free, and there are always opportunities to explore the Park Lands on your own, or with friends or family. Browse our "[Explore Parks](#)" pages for hints about interesting spots to visit. This month's featured opportunities are:



[The Big Red Kidney Walk](#)

Sunday 8 September, Elder Park / Tarntanya Wama (Park 26)

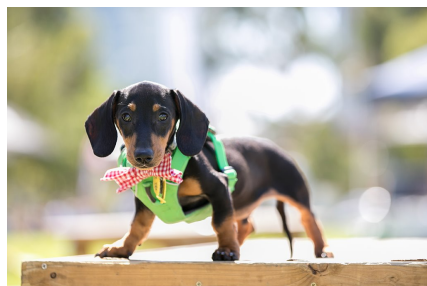
Show your support. The Big Red Kidney Walk raises awareness of kidney disease, and raises funds to improve the quality of care for those already living with the disease. Click the pic for details.



[SALA Parlour](#)

On the South Australian Museum lawns, in Prince Henry Gardens off North Terrace. Every day until 31 August.

An interactive pop-up drop-in art space for children and young people. Come and contribute to an expanding colour installation. Click the pic for details.



[Houndwave - Doggy Day Out](#)

Saturday 21 September
11:00am - 4:00pm, Light Square
Adelaide's pooch-friendly music festival, markets and more. #Houndwave #MustLoveDogs.

A chance for dogs and their two legged companions and friends to celebrate the ancient bond between dogs and humans.

[Flowering trees in the Adelaide Botanic Garden](#)

Open every day until sunset. With spring almost upon us, it's a colourful time to be visiting the Adelaide Botanic Garden, in Park 11. There are flowering quince, plum

[Subscribe](#)[Past Issues](#)[Translate](#) ▾[RSS](#) 📡

and cherry trees, to name a few.

Acacias are also starting to bloom in the Mallee section, and cauliflowers are forming heads in the Kitchen Garden. Click the pic for details.



[Guided walk through Lefevre Park / Nantu Wama \(Park 6\)](#) - Sunday 15 September - 1.30pm to 3pm.

Join Park ambassador Valdis Dunis for a guided walk, through one of the best-loved parts of the Park Lands where horses run free - with insights into Park 6's heritage, history, sporting facilities and more. No booking necessary. Gold coin donation. (Free for APPA members). Children and dogs most welcome. Click the pic for details.



Share



Tweet



Forward

EXPRESSIONS OF INTEREST FOR RECREATION FACILITIES

The City Council recently called for expressions of interest for anyone (most likely sports clubs or schools) interested in hiring, leasing and/or licensing sport and recreation facilities in:

- Rundle Park / Kadlitpina ([Park 13](#))
- King Rodney Park / Ityamai-itpinqa ([Park 15](#)); and
- Victoria Park / Pakapakanthi ([Park 16](#))

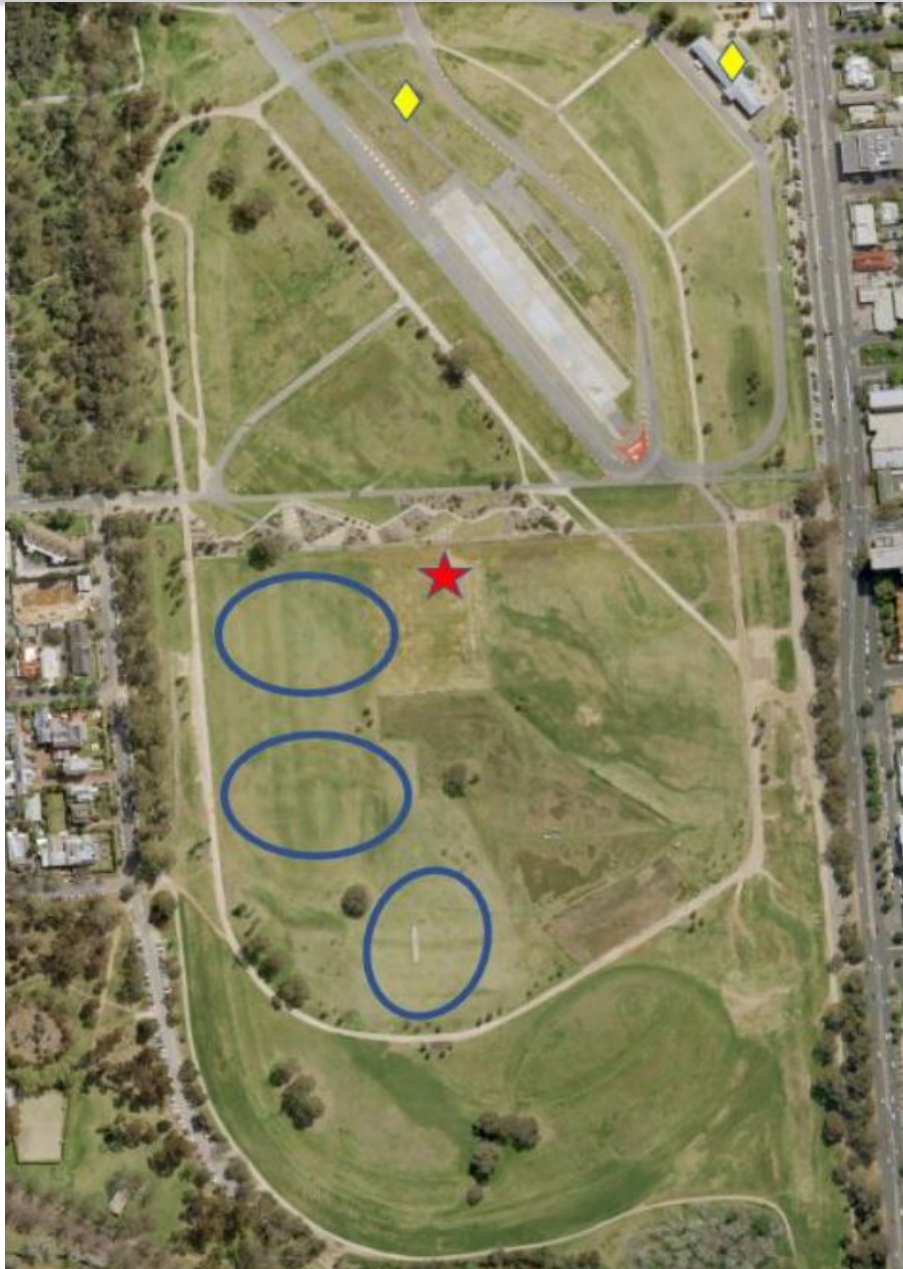


[Park 13](#) (above) has a petanque piste and a viewing platform, currently licensed to the "Feral Aussie Boulistes" club.

[Park 15](#) (above) has two sporting ovals and sheds licensed to Christian Brothers College.

Both licensees presumably want to continue using these facilities, but the Council is going through a proper process of opening up the possibility of others using these facilities.

Expressions of interest for Parks 13 and 15 closed on Friday 9 August.



In Victoria Park, ([Park 16](#)) the Council's inviting expressions of interest for three sporting fields, but only for the summer months until the end of March 2020.

Hiring usage would be suspended during the annual three-day equestrian event in November, and the motor sport festival in March.

Expressions of interest are due to close at 5pm on Monday 19 August.

For more details, see <https://yoursay.cityofadelaide.com.au/>



Share



Tweet



Forward

BRIEFLY, IN OTHER PARK LANDS NEWS

Stumps for seats?

Junior Park Ambassador for G.S. Kingston Park/Wirrarinithi ([Park 23](#)) Nate Jennings, is investigating how and why the City Council is turning some Park Lands tree stumps into chairs. Read his article next month.

Subscribe

Past Issues

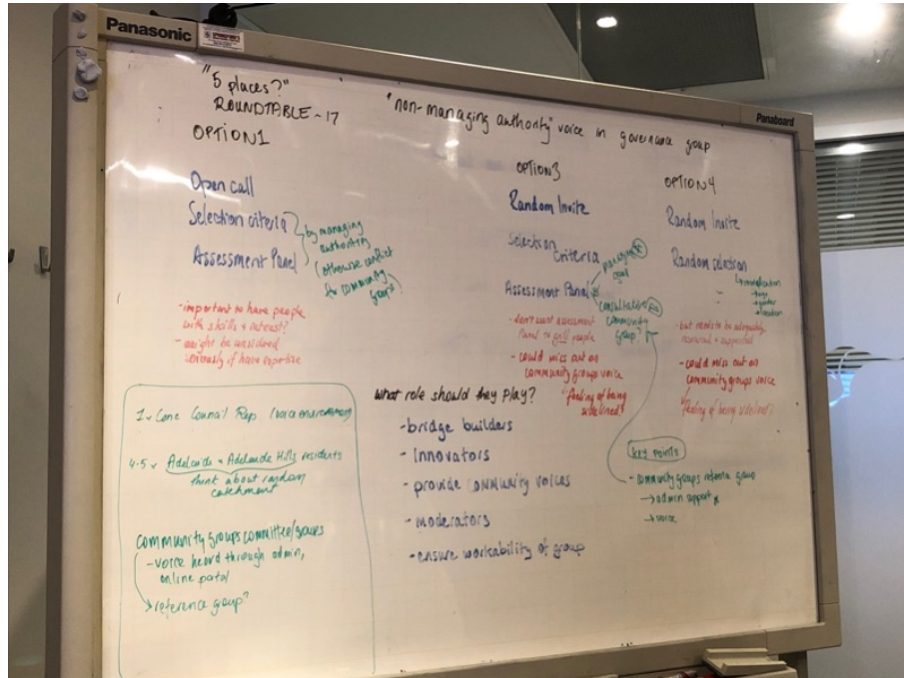
Translate

RSS

Park Lands. Challenge him with a sleuthing task: Natejennings@adam.com.au



Who should manage the River Torrens? And how?



As mentioned in our [past two monthly newsletters](#), APPA has been participating in a review of how the River Torrens is governed. APPA's Ted Jennings has attended workshops in June, July and August.

The most recent meeting on August 15th captured and collated the advice of community members along the length the of the Torrens river.

There was strong agreement (80% of community members present) on one particular model which will be taken by DemocracyCO and used as they continue drafting a new and potentially different model of Governance for the River Torrens and its vast catchments.

On track for BMX upgrade



The BMX tracks at Blue Gum Park / Kurangga ([Park 20](#)) look set for a family-friendly upgrade.

[Subscribe](#)[Past Issues](#)[Translate](#) ▼[RSS](#) 📡

While design work isn't due to start until next financial year, the initial plan presented to Adelaide City Council includes a number of use enhancements, including:

- expanded beginner track
- reconfigured intermediate track
- pump track surface improved
- more seating
- Wi-Fi hot spots
- meeting areas
- trackside webcam spaces
- bike repair station.

The works aim to build on the increasing popularity of this recreational area adjacent to the tree-climb facility.

Read full Advertiser [article](#)

WHAT CAN YOU DO TO HELP?

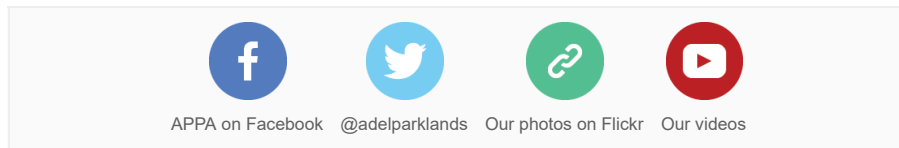
APPA always welcomes any assistance with supporting our Park Lands.

We have listed 10 ways that you can help at: www.adelaide-parklands.asn.au/take-action

Specific suggestions you could do right now are:

1. Send a written (&/or pictorial) contribution to this newsletter or our social media feeds such as a letter to the editor, a news tip you've heard, or a personal anecdote or photo about your favourite part of the Park Lands. Send to secretary@adelaide-parklands.asn.au

2. Follow APPA on social media through one or more of these links:



3. Donate (click the pic to find out how)



4. Send a letter or email on a current issue.

Right now we recommend contacting the CEO of the Adelaide Football Club, Andrew Fagan, and City Councillors about their plan to hand over part of Park 2 for a Crows administration headquarters. See the story and suggested email in the Crows story above.

5. Join us!

Already in 2019-20 our membership list has grown larger than last year's, thanks to hundreds of renewing members and many new ones.

You too can be a proud Park Lands supporter, with membership starting at only \$15 (for concession and student membership) for a year.

We rely almost exclusively on annual membership fees to continue our Park Lands advocacy, so if you haven't already, please consider putting your money where your mouth is and backing APPA to keep up the Park Lands fight.

As a financial member of APPA, you receive:

- the priceless satisfaction of supporting APPA's work;

Subscribe

Past Issues

Translate

RSS

free participation in our monthly guided Park Lands walks; opportunity to become a Park Ambassador and lead an annual guided walk

- the responsibility to help guide APPA's activities through the [Annual General Meeting](#); and
- a printable PDF membership certificate (as above).

Those who've already paid their 2019-20 membership have already received one of these printable certificates.



Share Tweet Forward

PHOTOS OF THE DAY - RECENT HIGHLIGHTS



Subscribe

Past Issues

Translate ▾

RSS 📡



From the top:

- a) Sunrise over the billabong in Bonython Park / Tulya Wardli ([Park 27](#))
 - b) Wood ducks in flight across runners in Red Gum Park / Karrawirra ([Park 12](#))
 - c) University of Adelaide Soccer club home game in Bullrush Park / Warnpangga ([Park 10](#))
 - d) the rare chequered copper butterfly in Victoria Park / Pakapakanthi ([Park 16](#)).
- Photo: Greg Coote
- e) a character gum tree off Medindie Rd in Lefevre Park / Nantu Wama ([Park 6](#))

The Park Lands "photo of the day" series has been running since May 2014, and the collection of Park Lands photos gathered over more than five years now numbers over 1,900. We maintain (and gradually grow) more than 40 separate albums: one for each numbered Park and Square, along with several albums for "Alienations". Contributions are very welcome! To find out more about any of these featured Parks, click the link to the Park number.

To see the #AdelaideParklands Photo Of The Day as it's released each morning, just follow us on Facebook, Instagram &/or Twitter

Despite being a National Heritage-listed place, the Adelaide Park Lands are not well protected by Federal environmental laws.

That's why we've joined the [Places You Love Alliance](#), to campaign along with 55 other organisations for better environmental protection laws.

Adelaide Park Lands

APPA

Preservation Association

PLACES YOU LOVE

BETTER LAWS FOR A BETTER PLANET

We are a member organisation of the national "Places You Love Alliance"

Editor: Shane Sody
Contributors: Ted Jennings, Kate Treloar
Proofreader: Trish Russell

Send content enquiries/submissions to secretary@adelaide-parklands.asn.au

APPA on Facebook @adelparklands APPA website Our photos on Flickr Our videos

Share Tweet Forward

Copyright © Adelaide Park Lands Preservation Association, Inc. [2015] All rights reserved.

[unsubscribe from this list](#) [update subscription preferences](#)

