

Subscribe

Past Issues

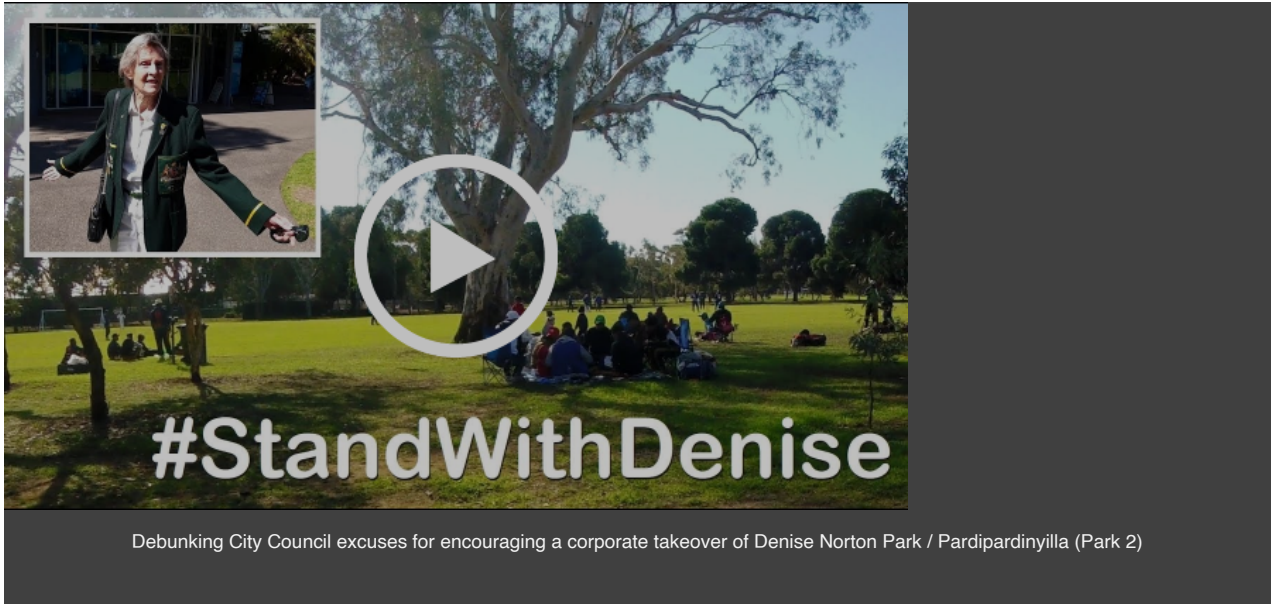
Translate ▾

RSS 📡

e-Gazette No. 055 - October, 2019

If this email is not displaying properly (e.g. if it's truncated or there are no pictures or videos) then click to [view this email in your browser](#)

#StandWithDenise



What can you do?

We've launched an advertising campaign, on InDaily (see the banner below) to support Denise Norton. The campaign will ensure that more people see our video #StandWithDenise

Please chip in to spread the word, so that more people can see #StandWithDenise

Donate to the campaign here:

<https://www.mycause.com.au/page/215250/standwithdenise>



In this newsletter:

- [LORD MAYOR RESPONDS TO #StandWithDenise](#)
- [HERDING CATERPILLARS IN VICTORIA PARK](#)
- [LIKE "PUTTING GRAFFITI ON THE TAJ MAHAL"](#)
- [NORTH TERRACE TREES REMOVED](#)

Subscribe

Past Issues

Translate ▼

RSS 📡

- [STATE HERITAGE LISTING - A REPLY WITH NO MEANING](#)
- [WHAT'S ON IN THE PARK LANDS](#)
- [BUILDING GUIDELINES: CLEARING THE WAY?](#)
- ["LIGHTING ANOTHER EXPLODING CIGAR"](#)
- [BRIEFLY, IN OTHER PARK LANDS NEWS](#)
- [WHAT CAN YOU DO TO HELP?](#)
- [PHOTOS OF THE DAY - RECENT HIGHLIGHTS](#)

LORD MAYOR RESPONDS TO #StandWithDenise

More than 10,000 people have seen the video #StandWithDenise (above). Many of them have been peppering the Lord Mayor, Sandy Verschoor, with questions about why the City Council is encouraging the Crows to make a commercial takeover bid for Denise Norton Park / Pardinpardinyilla ([Park 2](#)).

To respond to the video, the Lord Mayor was interviewed by David Bevan on 891 ABC Adelaide on 9 October.

We have posted the entire 13-minute interview as an audio file onto our website. You can download it or stream it to your computer or smart phone. Subject to some comments and clarifications from APPA (below) the Lord Mayor's interview essentially confirms most of the concerns we have raised in the video #StandWithDenise (above).

Listen to what the Lord Mayor says and judge for yourself:

www.adelaide-parklands.asn.au/crows



Several items from the Lord Mayor's interview need a follow-up from APPA:

- Questioned on how many secret meetings had occurred between the City Council and Crows officials, the Lord Mayor said there had been only two such meetings. Presumably the Lord Mayor was referring only to meetings involving Councillors. Other meetings have been held between Adelaide Football Club executives and Council administration staff. We don't know how many of those there have been, but as we highlighted in our newsletter of [May 2019 \("Plotting the Takeover of a Park"\)](#), the Council delegated two senior officials to carry out these secret talks.
- The video was described as "scaremongering and opinion, not facts". Some of the imagery is necessarily speculative because, unlike the Lord Mayor, we have not seen the Crows' tentative plans. Nevertheless, the #StandWithDenise video depicts the sort of things that would be permitted under the Council's own so-called "Guiding Principles" such as the buildings recently erected by the Fremantle Dockers in Perth.
- The Lord Mayor defended the Council's so-called "unsolicited bids" process but David Bevan did not query why this was regarded as an appropriate process for the world-unique National Heritage-listed Park Lands. This is what we have identified, in the video, as "Excuse #3". The entire process must be challenged. The Lord Mayor did not indicate why the Council is persisting down this erroneous path. If you are driving the wrong way down a one-way street, you do not insist on finishing your mistaken drive along the street before doing a necessary U-turn.
- The Lord Mayor said it was her "understanding" that the Crows would not be seeking to have the equivalent of a "Crows shed" in their proposed new building and that the Council did not want a "permanent liquor licence" on the premises. However, the Lord Mayor was not asked and hence did not need to address the likelihood that the Crows could (and quite likely would) simply obtain a liquor license on every game day, if not more often.
- In response to questioning from David Bevan (hear the audio below) the Lord Mayor said "one would hope" that the Crows did not intend to fence one or more training ovals in the Park Lands. The Lord Mayor said "there's no Council that would ever approve fencing off of Park Lands". This would be a big surprise to the Adelaide Bowling Club, the Adelaide Hockey Club, the SA Cricket Association, and the Memorial Drive Tennis Club, which have been permitted to fence off large areas of Parks 14, 20, 25 and 26 respectively. See the pictures below. The Council's own Guiding Principles for the Crows do not rule this out for Denise Norton Park.

Subscribe

Past Issues

Translate ▾

RSS 📡



"A lot of scaremongering there's no Council that would ever approve fencing off of Park Lands." - Lord Mayor, Sandy Verschoor Wed 9 October.

Hear David Bevan's direct question and the Lord Mayor's answer about fencing of Denise Norton Park for the benefit of the Crows ([a 35-second audio file](#))

All of the above is taking place while the Crows CEO Andrew Fagan is boasting to supporters that the football business is "determined to deliver" on its corporate Park Lands plans.

The North Adelaide Society has undertaken an excellent analysis of all the behind-the-scenes intrigue and the PR-spin justifications. Read their [four-page analysis here](#).

And, if you haven't already, email the Lord Mayor and Councillors

see www.adelaide-parklands.asn.au/crows



www.adelaide-parklands.asn.au/crows



Share



Tweet



Forward

HERDING CATERpillars IN VICTORIA PARK

And now for something completely different...

A team of volunteers from the Butterfly Conservation Society has put together a fascinating and delightful resource that showcases an unusual partnership between a local (rare) species of butterfly and colonies of tiny native ants that exist, in symbiosis, in remnant native grassland in the heart of Victoria Park / Pakapakanthi ([Park 16](#)).

These pictures do not do justice to the photos and videos that are available on the link below. If you follow the link, you can see 20 images, including maps, and photos of the butterflies, their food, their eggs and most fascinating of all, two stunning close-up videos of the ants attending to the chequered copper caterpillars.



We urge you to visit this link. Really. It's well worth a look.

<https://storymaps.arcgis.com/stories/41cb53778cf648b4b47387c4c46e4886>

It takes a few moments for the page to load as it contains not just a dozen or more high-resolution images, but also two very close-up intimate videos of ants attending to the caterpillars. David Attenborough would be proud of these efforts, and APPA congratulates the Butterfly Conservation Society along with the photographers Greg Coote and Gerry Butler.



Share



Tweet



Forward

LIKE "PUTTING GRAFFITI ON THE TAJ MAHAL"

Subscribe

Past Issues

Translate ▾

RSS 📡



The Adelaide City Council is planning to lobby for World Heritage listing of the Adelaide Park Lands. The Council has been advised that World Heritage listing would lead to a tourism boost for Adelaide in the order of 20 to 30%.

When UNESCO eventually gets to consider Adelaide's case, the world heritage value of our world-unique Park Lands will not be improved by the number of hotels that we have managed to cram into them.

Putting hotels into our world-unique Park Lands to boost tourism is like putting graffiti onto the Taj Mahal and hoping that the graffiti will entice visitors. Shoehorning another hotel into the Park Lands (on current plans there will be four of them by late 2020) will hinder, not help Adelaide's World Heritage chances.



"That hotel is not going to be an asset - it will be vandalising the real asset, behind me."

APPA President Shane Sody making the point on TV News (Channels Nine and Ten) on Friday 11 October, as construction work started at Adelaide Oval.



Share



Tweet



Forward

NORTH TERRACE TREES REMOVED

Subscribe

Past Issues

Translate ▾

RSS 📡



Eleven century-old trees on North Terrace, outside the old RAH (ten elms and one plane tree) were destroyed on Saturday 4 October.

So sad.

And yet this vandalism is consistent with the State Government's refusal to acknowledge that their so-called "Lot Fourteen" is actually part of [Park 11](#) in the world-unique Adelaide Park Lands.

This was the coup-de-grace - the final act in the rejection of any semblance of a "Park".

The Government's stale tired vision is to replace old buildings on Park Lands with new buildings on Park Lands, without any regard to the status of this land.

To the Government's chainsaw operators, these trees were obstacles, just like the many well-wishers who [tried in vain](#) to be obstacles in their effort save the trees.

Thanks for trying



Share



Tweet



Forward

IGNORING THE LAW FOR "LOT FOURTEEN"

[Subscribe](#)[Past Issues](#)[Translate](#) ▾[RSS](#) 📡

This is the Government's shocking mid-20th century vision of how to advance the reputation of the world's only City in a Park. Their aim is to build over the old RAH site in [Park 11](#) as much as possible.

These plans are going ahead in flagrant disregard of the law (Section 23 of the *Adelaide Park Lands Act 2005*) that requires drawing up plans to return this site to Park Lands.

Yet the extent of the State Government's planning proposal is to change the zoning from "hospital" to "mixed use".

If you can be bothered to comment on that proposal you could do so by 27 November at www.saplanningportal.sa.gov.au/ed/consultation

But if the Government won't even respect their own law, what are the chances they would listen to the results of consultation with you?



"Consultation" on the old RAH site - SA-Government-style

Pictured (below) is the Park 11 site of the former Adelaide Dental Hospital off Frome Road (inset). Despite clearing the site, the State Government is still refusing to comply with its law that requires a report on how to return this site to Park Lands. It's now building (here on Park 11) a new "centre for tourism hospitalitv and food services". This site is just one of 198 Park Lands losses catalogued (so far) at www.adelaide-parklands.asn.au/alienations

Subscribe

Past Issues

Translate ▼

RSS



Share



Tweet



Forward

ASPRINGSTROLL WITH KEITH CONLON

Keith Conlon has lived in Adelaide for about 40 years and spent countless hours [exploring the Park Lands](#) by foot or on his trolley.

A history enthusiast (he's currently Chair of the [South Australian Heritage Council](#)) and nature lover – who better to take us on a tour of one his favourite city walking trails and share, in his own words, what to discover along the way?

The City Council has enlisted Keith's help to prepare a map and a walking trail that takes in parts of Botanic Park and Mistletoe Park / Tainmuntilla ([Park 11](#)).

It can be easily walked, or ridden by bike. How long it takes depends on how long you spend at each of point of interest or – like Keith – if you stop to chat with others on the pathway!



Check out Keith's suggested walking trail here:

<https://living.cityofadelaide.com.au/a-spring-stroll-with-keith-conlon/>

APPA offers our own Guided walks in the Park Lands – one every month. Check out our schedule here:

www.adelaide-parklands.asn.au/guided-walks

Subscribe

Past Issues



Share



Tweet



Forward

Translate ▾

RSS

STATE HERITAGE LISTING – A REPLY WITH NO MEANING



On 28 December 2018 APPA [wrote to Environment Minister David Speirs](#) urging him to act upon the recommendation of the State Heritage Council and formally list the Adelaide Park Lands as a State Heritage Area.

We have been very patient. We nominated the Adelaide Park Lands for State Heritage listing 10 years ago, in 2009.

After getting no response from the Minister, we [wrote again on 26 August 2019](#).

We finally received a reply dated 19 September 2019 but it contained no assurances. Minister Speirs has promised to "raise the matter" with Minister Knoll.

What does that mean?

Judge for yourself. [Here's the letter.](#)



Share



Tweet



Forward

WHAT'S ON IN THE PARK LANDS

There are always events scheduled in the Park Lands, many of them free, and there are always opportunities to explore the Park Lands on your own, or with friends or family. Browse our "[Explore Parks](#)" pages for hints about interesting spots to visit. Upcoming featured opportunities are:



[Moon Lantern Parade and Fireworks](#)

Sat 19 October, Elder Park

Showcasing hundreds of hand-held lamps and over 50 giant lanterns including the 40m Hong Kong Dragon. There's also a dragon boat race and live music by the Australian-Chinese music collective Emissary of Tang.

Click the pic for details.



[Adelaide Strikers home games, Women's Big Bash](#)

saturday 19 and Sunday 20 October
2:00pm–5:00pm at Karen Rolton Oval in Gladys Elphick Park/Narnungga (Park 25).
Click the pic for details.

[Girls Come and Play Footy](#)

Sun 20 Oct, 9:30–11:30am in Denise Norton Park off Fitzroy Tce, North Adelaide ([Park 2](#))

Suitable for girls aged 7 to 11. A quick intro to handball and kicking before being split into teams to play. Modified footy rules means it's safe and lots of fun. Click the pic for details.

[Subscribe](#)[Past Issues](#)[Translate](#) ▼[RSS](#) 📡

[Music in the Square](#)

Thurs 24 Oct, 12:00–2:00pm, Hindmarsh Square.

Bring a packed lunch or enjoy the the street-food trucks with friends or work colleagues as Hindmarsh Square fills with the live tunes of some of Adelaide's best local live music: Oopsie Daisy and The Empty Threats. Click the pic for details.



[CheeseFest and FERMENT Festival](#)

Sat 26 – Sun 27 Oct, Rymill Park / Murlawirrapurka ([Park 14](#))

Showcasing some of the country's finest cheeses, wine and fermented food and beverages, plus a selection of international cheeses.

Click pic for details.



[Guided Walk through Victoria Park /](#)

[Pakapakanthi \(Park 16\)](#), Sun 10 November, 10am–12noon, meet corner South Tce & East Tce.

Learn about Victoria Park's horse- and motor-racing history, plus its surprising ongoing role in providing rare habitat for an endangered butterfly. Children and dogs on leads are most welcome. Gold coin donation requested (free for APPA members). Wear sturdy shoes for a walk of about 2 hours duration. Click the pic for details.



[Aboriginal plant use trail](#)

Tues 12 Nov, 11:30am–12:15pm

Join Aboriginal storyteller, educator and guide Trent Hill for a trail through the Adelaide Botanic Gardens. Learn about the traditional uses of trees and plants, relating seasonal movements to the surroundings. Suitable for all ages but children must be accompanied by a parent or guardian. Click the pic for details.



Share

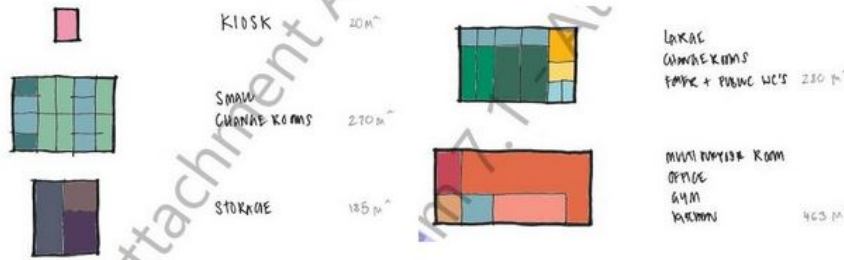


Tweet



Forward

PARK LANDS BUILDING GUIDELINES: CLEARING THE WAY?



There are more than 200 Park Lands alienations, which we are gradually [documenting on our web site](#).

Many of them (about 140) are buildings that have been approved by the Adelaide City Council at various times over the past 100 years or more.

Some of them are welcome insofar as they help the public, students, and/or community sports groups make use of public Park Lands. However many of these buildings need refurbishment, or replacement to 21st century standards. Where this can be achieved, careful design of any new buildings represents an opportunity to reduce their impact on the public and the public realm of the world-unique, National Heritage listed Park Lands.

On the other hand, some promoters of new buildings want to do the opposite: [to enlarge the impact of buildings on Park Lands](#), to include office, administration, storage and commercial land uses that detract from the public sphere.

The Adelaide City Council next week will consider endorsing new "Building Design Guidelines".



North Adelaide ward Councillor Phillip Martin has been examining the draft document:

"These days there's hardly a week goes by without controversy for our Park Lands. Here's another one from the City of Adelaide. And no it's not about the proposed Crows takeover of Park 2 which the majority faction of Council has repeatedly voted to keep secret.

"This time the elected body is being asked to approve guidelines for new buildings on the Park Lands. Rules allowing multiple buildings instead of one, the how to plans for viewing decks on top of two-storey buildings and even guidelines for car parks are all on the table.

"Some concerned friends of the Park Lands believe the guidelines will lead to inappropriate developments. If you don't like the look of them (see the link below), tell the Lord Mayor and the Councillors. They need to know ... and pronto!"



See page 55 of [this document](#), which was considered by the City Council "Committee" on Tuesday 15 October before

[Subscribe](#)[Past Issues](#)

going to the full Council meeting next Tuesday 22 October

[Translate](#) ▾[RSS](#) 📡https://dmzweb.cityofadelaide.com.au/agendas/minutes/files08/Agendas/COMMITTEE/2019/2019_10_15COMMITTEE.pdf

Share



Tweet



Forward

"LIGHTING ANOTHER EXPLODING CIGAR"



For more than a year, the City Council has kept strictly confidential, draft plans for a multi-million dollar function centre in Possum Park / Pirltawardli ([Park 1](#)).

This Park is home to three North Adelaide Golf courses.

Back in August 2018, ahead of last year's Council elections, *The Advertiser* broke the story ([subscriber-only link](#)) that plans were being drawn up to transform [Park 1](#) with a swag of commercial developments totalling "at least" \$20 million.

Since then, the Council's draft master plans for [Park 1](#) have remained confidential, but the Council has not denied *The Advertiser's* speculation that a multi-million dollar commercial function centre is one of the items on the drawing board.

The latest indication is that secrecy around the plans may be lifted in December.

North Ward Councillor Phil Martin has told the *City Messenger* ([subscriber-only link](#)) that "every ratepayer of the city, every resident of greater Adelaide and every person in SA in general needs to review this report."

"My personal view is that if council adopts this report, it will be like lighting yet another exploding cigar."

He would not comment further because of a confidentiality order on the plan.



Share



Tweet



Forward

BRIEFLY, IN OTHER PARK LANDS NEWS

"Wrong Track" book launch

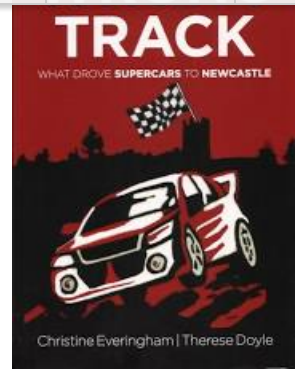
Adelaide is not the only city where motor sport takes over a city and Park Lands for months at a time.

As we prepare to have Victoria Park / Pakapakanthi ([Park 16](#))

Author Dr Christine Everingham is coming to Adelaide to speak on how a Supercar motor racing circuit was inappropriately established in a medium density area of Newcastle incurring the expenditure of millions of dollars of public funds. Her work poses the question 'Is the Adelaide 500 Supercars race on the wrong track too?'

Read more about the issues at <https://wrongtracknsw.com/>

Meet Dr Everingham at the launch of her book "Wrong Track" at the Box Factory Community Centre, 59 Regent Street South, 6.30pm on Thursday 7 November.



The full story of the Himeji Japanese garden

The *Adelaide Review* has published a tribute to the Adelaide Himeji Japanese garden, the most popular feature of Peppermint Park / Wita Wirra ([Park 18](#)).

[How a Japanese landscape designer rescued Adelaide's "garden of tranquility"](#)



City of Adelaide Park Lands Ranger Peter Baldacchino with specially-made rakes used to shape the Sea of Sand (Photo: Sia Duff)

What do we want? - Parks!

The public has spoken. People need and want parks in their urban spaces.

The Guardian threw open the challenge

And, not surprisingly, virtually all of the approximately 100 responses so far have supported green space where people live, work and play.

Also not very surprising is that there isn't as much agreement on the best way for these spaces to look!

Read the [Guardian article](#) - and most importantly the public comments at the end.

It's important to have parks within walking distance of all neighbourhoods. They don't all have to be large or include amazing play equipment, but we need to provide options for people to access some open green space near where they live and work.

→ Reply < Share Report

GavinHardy2239 2h ago 3 ↑

We just need more parks especially in high density areas like West End / South Brisbane. We need to spend more money buying the land to create parks. We need more politicians and leaders with the courage to champion parks and green space.

→ Reply < Share Report

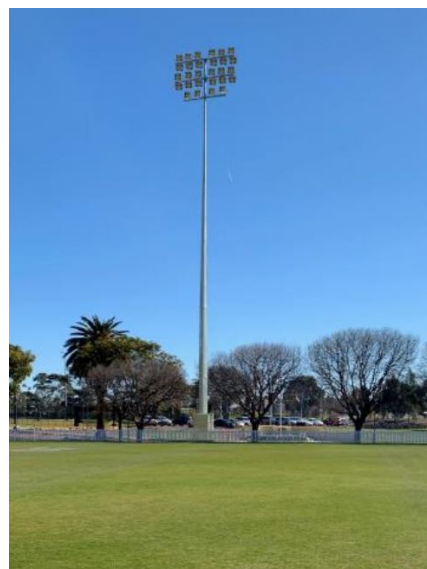
Light towers coming to Park 25

The City Council has given approval for the SA Cricket association to install four new light towers in Gladys Elphick Park / Narnungga ([Park 25](#)).

SACA received a Federal Government grant of \$500,000 towards the light towers. At 30 metres (as depicted here) the towers will be probably the tallest and most powerful in the Park Lands (other than at Adelaide Oval).

The lighting is regarded as "Class 1" i.e. the highest level of lighting for playing cricket, albeit not quite bright enough for TV broadcasting.

Before granting permission, the City Council consulted the Royal Adelaide Hospital and the State Rescue Helicopter Service, but did not consult the public.



The 11th (forgotten) playground

What have people got against the playground in Mary Lee Park ([Park 27B](#))?

The City Council has [an excellent web page](#) explaining the features of 10 different playgrounds within the Adelaide Park Lands. The Advertiser has copied the idea, and is [asking you to vote for your favourite](#) among the ten.

Neither the 'Tiser nor the City Council have included this small playground (below) in Mary Lee Park, off Park Tce at Bowden (next to the North Adelaide railway station). Admittedly, it's the runt of the litter - not the biggest or best, but we thought it should get a mention.

[Subscribe](#)
[Past Issues](#)
[Translate](#)
[RSS](#)


Check out all the other ten playgrounds in either [the Advertiser survey](#) or here [on the City Council's list](#).

Quentin Kenihan Inclusive Playspace



While we're on the subject of playgrounds, the City Council is planning what will become known as the "Quentin Kenihan Inclusive Playspace" to be built in Rymill Park / Murlawirrapurka ([Park 14](#)).

Unfortunately the Council opened consultation on the playground too late for inclusion in our September newsletter (23 September) and has already closed the consultation (last Monday, 14 October) before publication of this October newsletter.

Nevertheless, the proposed new playground will be notable as being designed not just for able-bodied kids but also those in wheelchairs and with other disabilities.

More details here: <https://yoursay.cityofadelaide.com.au/QK-playspace>

Art Prize - enter now!

[Subscribe](#)[Past Issues](#)[Translate](#) ▾[RSS](#) 📡

THE ADELAIDE PARK LANDS

art prize

2020



Entries have been coming in already for the Adelaide Park Lands Art Prize 2020. Total prize money of \$38,500 is on offer, including a first prize of \$20,000.

If you know an artist with an appreciation of the Adelaide Park Lands, make sure they are aware of the Park Lands Art Prize.

Entries close 31 January 2020. See www.parklandsart.com

Vote for our 2020 Parks restoration campaign



Voting is well under way in our supporter survey to determine which of four sites will be targeted in a concerted 2020 campaign for restoration to the Park Lands. This site (above) is the one that has received the most votes so far, a car park alienated from [Park 23](#).

Check out the other proposed choices and vote by 30 November
<http://www.adelaide-parklands.asn.au/restoration>

WHAT CAN YOU DO TO HELP?

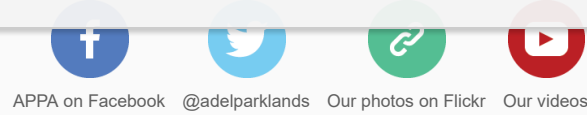
APPA always welcomes any assistance with supporting our Park Lands.

We have listed 10 ways that you can help at:
www.adelaide-parklands.asn.au/take-action

Specific suggestions you could do right now are:

1. Send a written (&/or pictorial) contribution to this newsletter or our social media feeds such as a letter to the editor, a news tip you've heard, or a personal anecdote or photo about your favourite part of the Park Lands. Send to secretary@adelaide-parklands.asn.au

2. Follow APPA on social media through one or more of these links:

[Subscribe](#)[Past Issues](#)[Translate](#) ▾[RSS](#) 📡

3. Donate (click the pic to find out how)



4. Send a letter or email on a current issue.

Right now we recommend contacting the CEO of the Adelaide Football Club, Andrew Fagan, and City Councillors about their plan to hand over part of Park 2 for a Crows administration headquarters. See the story and suggested email in the Crows story above.

5. Join us!

Already in 2019–20 our membership list has grown larger than last year's, thanks to hundreds of renewing members and many new ones.

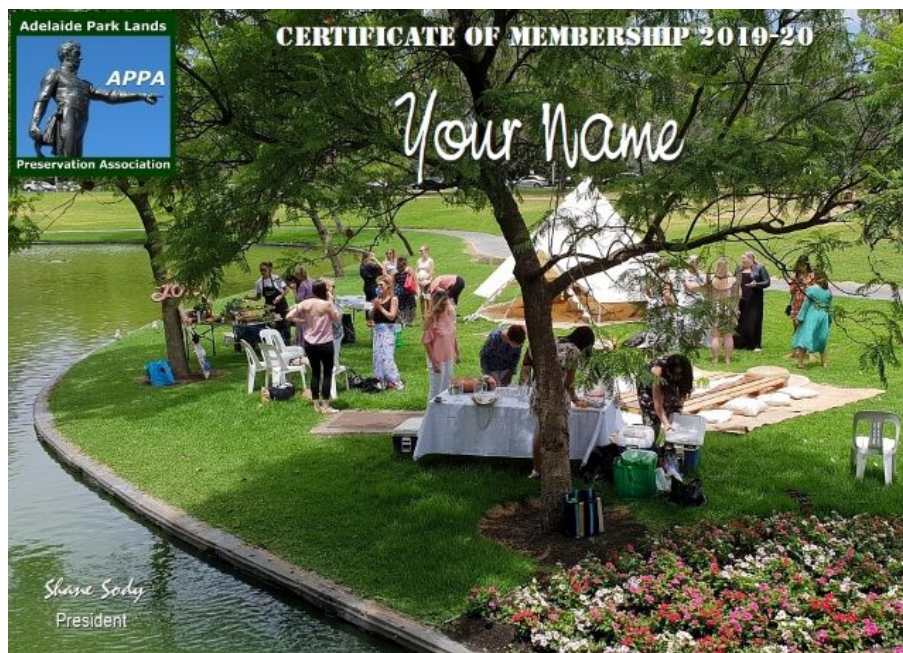
You too can be a proud Park Lands supporter, with membership starting at only \$15 (for concession and student membership) for a year.

We rely almost exclusively on annual membership fees to continue our Park Lands advocacy, so if you haven't already, please consider putting your money where your mouth is and backing APPA to keep up the Park Lands fight.

As a financial member of APPA, you receive:

- the priceless satisfaction of supporting APPA's work;
- free participation in our [monthly guided Park Lands walks](#);
- eligibility to become a Park Ambassador and lead an annual [guided walk through one Park](#);
- the responsibility to help guide APPA's activities through the [Annual General Meeting](#); and
- a printable PDF membership certificate (see below).

Those who've already paid their 2019–20 membership have already received one of these printable certificates.



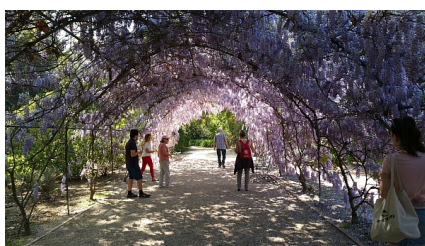
Share



Tweet



Forward

[Subscribe](#)[Past Issues](#)[Translate](#) ▼[RSS](#) 📡**PHOTOS OF THE DAY - RECENT HIGHLIGHTS**

From the top:

- a) Sunrise over Victoria Park / Pakapakanthi ([Park 16](#))
- b) Metal dragonflies in Bunday's Paddock / Tidlangga ([Park 9](#))
- c) A tawny frogmouth camouflaged in Mary Lee Park ([Park 27B](#)). Pic credit: [Hindmarsh Greening](#)
- d) Wisteria Arbour in Botanic Gardens ([Park 11](#)). Pic credit: Trish Russell
- e) Walking through Rymill Park / Murlawirrapurka ([Park 14](#))

The Park Lands "photo of the day" series has been running since May 2014 and the collection of Park Lands photos gathered over more than five years now numbers over 1,900. We maintain (and gradually grow) more than 40 separate albums: one for each numbered Park and Square, along with several albums for "Alienations". Contributions are very welcome! To find out more about any of these featured Parks, click the link to the Park number.

To see the #AdelaideParklands Photo Of The Day as it's released each morning, just follow us on Facebook, Instagram &/or Twitter.

Despite being a National Heritage-listed place, the Adelaide Park Lands are not well protected by Federal environmental laws.

That's why we've joined the [Places You Love Alliance](#), to campaign along with 55 other organisations for better environmental protection laws.

Subscribe

Past Issues

Translate ▾

RSS 



**BETTER LAWS
FOR A
BETTER PLANET**

We are a member organisation of the national "Places You Love Alliance"

NEWSLETTER TEAM

Contributors: Ted Jennings, Kate Treloar
 Proofreader: Trish Russell

Send content enquiries/submissions to secretary@adelaide-parklands.asn.au



APPA on Facebook



@adelparklands



APPA website



Our photos on Flickr



Our videos



Share



Tweet



Forward

Copyright © Adelaide Park Lands Preservation Association, Inc. [2015] All rights reserved.

[unsubscribe from this list](#) [update subscription preferences](#)

