

ParkLANDS news

August 2012 Number 47



Contents

President's letter ... 2	4 ... Cirque du Soleil contacts
Issues on the table ... 2	5 ... [Car]Park 24: Boycott of Cirque du Soleil
The Queen's Diamond Jubilee ... 2	6 ... APPA's 25th anniversary event
Queen's Birthday 2012 Honours congratulations ... 2	8 ... A tribute to Her Majesty Queen Elizabeth II – Princess Elizabeth Children's Playground
Vale C Warren Bonython AO ... 2	10 ... Adelaide High sprawl – cat 3
Annual General Meeting 2012 ... 3	10 ... Former Oval yew axed
Prof Graeme Hugo 'South Australia's changing population: some implications and challenges' ... 3	11 ... Membership notices and application form

President's letter

GREETINGS TO ALL YOU WORTHY WARRIORS FOR THE ADELAIDE PARK LANDS FROM THE PRESIDENT'S DESK

It is wonderful to be in a State in a Capital City where we enjoy the wonderful blessing of our Park Lands.

No other city has got or can get anything to compare with our Park Lands. Can you imagine the expense required by any of the deprived cities of the world to buy back an area of suburbs surrounding their city centre even one quarter the size of our Park Lands? Let alone attempting to match ours hectare by hectare!

Not only can we revel in the iconic uniqueness but we can enjoy them personally. For fun, exercise, romance, meditation, visual delight, family picnics, organised sport—the Park Lands are so generous that we can all indulge without falling over each other. They are so generous that you can even get to be on your own if you so desire, a rare option in other cities of the world.

APPA will be inviting people young and old to enjoy various aspects of the Park Lands in gently organised incentives and functions.

We need more people, as they enjoy the Park Lands, to realise the need to ensure they continue in the centuries ahead for our descendants for many generations, not just the spurious 'next generation'!

From this awareness will come the urge for people to join APPA and help us fulfil this obligation and destiny.

ISSUES ON THE TABLE

Adelaide High School expansion ambitions
Adelaide Oval demolition/expansion
Alienated Park Lands
Australian Heritage Strategy
Biodiversity survey
Britannia intersection land grab
Brownhill/Keswick Creek Stormwater Plan
Cirque du Soleil/Park 24 Event Venue
Dying elms and other trees; Adelaide Stadium missing yew and white cedar avenue
Land grabs at Adelaide High School site, railway yards, Adelaide Oval, Riverbank, Bonython Park
'Purple water' regime and damage
Riverbank 'Project'
Royal Adelaide Show car parking
SACA, SANFL, AFL and Stadium Management Authority
World Heritage listing

Front and back cover photo: Ground zero at the River End of Adelaide 'Oval'. Copyright K Henderson, 24 June 2012. Inset (back cover): 'What were parklands Dad?' The Advertiser, 10 November 1954, p 2.

The Park Lands will not survive the ravages of decades of spiritual neglect.

We can sense the fragility of the Park Lands: vulnerable to ad-hoc opportunism; threatened by misguided exploitation that is unable to value open space for its own beautiful ethos but regards it as a vacuum that requires stuffing with structures and things, or amputation of precious portions for hard surfaces or buildings to cater to the fad of the day—all destined to be seriously questioned and lamented fifty or so years hence.

More people enjoying the pristine charms of the Park Lands = more people protecting them = more people of all ages involved in APPA.

Ian Gilfillan

The Queen's Diamond Jubilee

Sincere good wishes to Her Majesty Queen Elizabeth II on celebrating over 60 years of devoted service in fulfilment of a solemn pledge:

I declare before you all that my whole life whether it be long or short shall be devoted to your service and the service of our great imperial family to which we all belong.

Princess Elizabeth (now The Queen)
21st birthday speech, 21 April 1947
(Coronation Day speech, 2 June 1953, also solemnly pledged service).

The only previous Diamond Jubilee celebrated by a British monarch took place in 1897, when Queen Victoria marked 60 years of her reign.

www.thediamondjubilee.org

Queen's Birthday 2012 Honours recognise AGM Guest Speaker Prof Graeme Hugo AO

Congratulations to all recipients of Queen's Birthday Honours, including APPA's AGM Guest Speaker Professor Graeme Hugo who was recognised as an Officer of the Order of Australia:

For distinguished service to population research, particularly the study of international migration, population geography and mobility, and through leadership roles with national and international organisations.

For the full Queen's Birthday 2012 Honours List see <http://www.gg.gov.au/content.php/page/id/93>.



VALE

C Warren Bonython AO

11 September 1916—2 April 2012

Renowned South Australian explorer, conservationist and author, Warren Bonython, supported APPA's campaign to save Victoria Park from the State Government's permanent multi-storey motor sport structure. Adding his name to APPA's Eminent Persons' Statement, Warren attested to the fact that the Park Lands:

are a priceless asset, held in trust for the people of both the City and our State. They must be protected—for the citizens who enjoy them now, for the attention and praise they attract from around the world, and for generations to come.

Parklands News, June 2007, p 9.

The son of Sir John Lavington Bonython (who also cherished William Light's legacy of Park Lands), Warren was born within cooe of the Park Lands and subsequently enjoyed Victoria Park and Adelaide Hills Face views and vistas from St Corantyn, his parents' home on East Terrace. Perhaps this played no small part in nurturing Warren's love of wide open spaces and wilderness and, in 1984 when Warren received the Royal Geographical Society's John Lewis Gold Medal (for Exploration), the citation was delivered by Sir Walter Crocker (later Patron of APPA).

Warren made innumerable contributions to ensuring many generations' enjoyment of public open space, recreational and conservation parks and walking trails, and our Association honours Warren's particular contribution to conserving the Adelaide Park Lands. We extend our heartfelt sympathy to his wife Bunty and family.

Vale Warren, thank you for treasured memories and the inspiration of a life well-lived.

ANNUAL GENERAL MEETING 2012

APPA's 25th Annual General Meeting was held on Sunday 15 April at the North Adelaide Community Centre in Tynte Street, North Adelaide.

President Kelly Henderson as Chairperson welcomed approximately 40 members and introduced guest speaker Professor Graeme Hugo.

Professor Hugo's address, entitled 'South Australia's Changing Population: Some Implications and Challenges', was supported by a Powerpoint presentation. Graeme fielded numerous questions from members, and former APPA President and Honorary Life Member, the Hon Ian Gilfillan, made a presentation to Graeme on behalf of those attending.

Apologies were received from 15 members and the 2011 AGM Minutes were received and formally approved. In her address, President Kelly Henderson reported on Business Arising and delivered the President's Report:

- progress on World Heritage nomination proposal, attendance at WH Nomination update seminar, Australian National University, Canberra, and World Monuments Fund Heritage@Risk Watch nomination (earthquake-damaged Provincial Buildings, Christchurch, NZ, the sole Australasian site listed);
- SA History Week online exhibition 'Trashed or Treasured?' and tour 'Victoria Park's Surprising Survivors', with thanks to Michael Sando and Kathleen Patitsas;
- public meeting at Box Factory on proposed destruction of Victoria Park remnant native vegetation; discovery of rare Copper Butterfly, and subsequent commencement of a private criminal prosecution of Adelaide City Council under the *National Parks and Wildlife Act 1974*, and *Native Vegetation Act 1991*;
- Vale C Warren Bonython AO;
- new threats: Ministerial Capital City Development Plan Amendment—Interim Operation 28 March 2012 prior to public consultation, and Adelaide City Council's Draft Residential Growth Policy;
- thanks to Hon Secretary Brian Mitchell, continuing Committee members, new nominees, and APPA's Patron;
- commendation of Adelaide Park Lands Authority Board member Gunta Groves for actively defending the Park Lands, being an agent for positive change, gaining support from other

Board members, and providing reports (available on APPA's website);

- thanks to Gunta and Philip Groves for initiating and producing the 25th anniversary edition of the Newsletter, and to Kyle Penick for maintaining an Association archive that facilitated the newsletter's compilation; presentation to Philip Groves of the publication *Public Dollars, Private Stadiums: The Battle over Building Sports Stadiums* in appreciation of Philip's myriad contributions to the aims of the Association and the defence of the Park Lands on his retiring as Deputy President and Treasurer.

Treasurer Philip Groves tendered the Treasurer's Annual Report for the financial year ended 31 March 2012 and reported a surplus of \$2126.45 for the year.

(Members who would like the Income and Expenditure Statement and Balance Sheet may request a copy from the Secretary.)

The Association's Honorary Auditor, David Carver, Managing Partner of BK Partners, Chartered Accountants, was formally thanked for his services and re-appointed for 2012–13.

The meeting adopted the outgoing committee's recommendation that 2012–13 contribution rates for the membership year commencing 1 July 2012 be maintained at 2011–12 levels.

The new committee includes Ian Gilfillan as President, Brian Mitchell as Secretary, Kelly Henderson, Luciana Larkin,¹ Kyle Penick, Hamish Ramsay and Michael Sando as committee members. A special thank you to Luciana for providing an excellent morning tea.

Brian Mitchell

1. Luciana Larkin was appointed as the Association's Honorary Treasurer at the 2012–13 committee's first meeting.

South Australia's Changing Population: Some Implications and Challenges

With over 30 years' experience in his field and more than 300 publications, Professor Graeme Hugo drew from his extensive knowledge of population issues to provide a thought-provoking and enlightening discussion of key aspects of population change in South Australia, emphasising we

must keep the Park Lands as open space, not just parts of it, but also have a look at novel and new ways of creating other forms of open space in the middle suburbs ...

Speaking on the importance of a national debate that engages the community, not only experts and government, Graeme made the point that the State's 30-year Plan is a plan for expanding the number of young households whereas in fact we are going to experience a massive growth of older households.

A cartoonist's humorous but telling depiction of this as the 'Invasion of the Ageing Boomers: 40,000 of the "me" generation, and they all want hip replacements' drove home this point as did the description of a university colleague referring to this as a 'tidal wave' or 'tsunami' of people moving into older age-groups.

Explaining that population change is enormously complex and discourse



Above: Professor Graeme Hugo addressing the Association's AGM on South Australia's Changing Population, 15 April 2012.

Continued p 4

in Australia over-simplified, Australia's population was described as 'very distinctive' with ageing being our biggest population issue:

- one of the world's fastest growing populations (only three Asian countries growing faster than Australia);
- one of the most urbanised, spatially concentrated, and mobile, with the world's highest rate of house moves (42.3% changed their place of residence 2001-06);
- one of the most multicultural, and increasingly distinct cultural differentiation;
- the baby boomer population (42% of Australia's workforce/44% of South Australia's workforce) not going to be replaced by young people is a very significant factor we need to take into account.

Professor Hugo spoke about the two extremes of debate respectively ignoring economic and environmental imperatives, and need for a population policy which has some growth, but growth with real sustainability that is also environmentally sustainable.

Over the next 25 years (a period less than the State Government's 30-year plan):

- numbers aged 65+ will double;
- the proportion of the population aged 65+ will almost double;
- characteristics of older population will change, and where older people will live will change.

The demography of households (much planning is based on number of households rather than number of people) is rapidly changing with several major trends:

- number of households is increasing faster than the population;
- decreasing in size and increasing in complexity;
- increasing size of housing and decreased lot size.

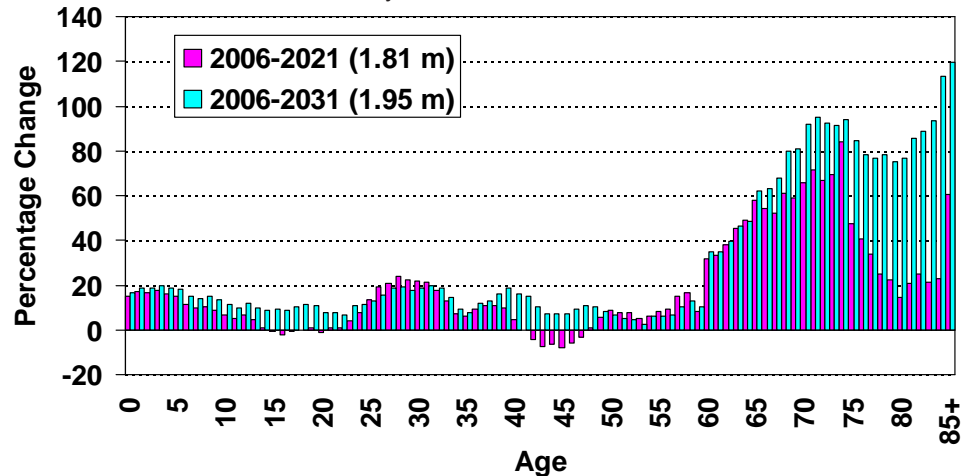
South Australia is exceeding 2007 State Strategic Plan Population Targets:

- **Target 1.22 Total Population**
2 million by 2050 with interim target of 1.64 million by 2014, currently 1.64 million and projected 2050 population of 2,551,525 if current rate is maintained;
- **Target 1.24 Overseas Migration**
Net overseas gain to be 8,500 by 2014, currently 15,731;
- **Target 1.25 Fertility**
Maintain at 1.7, currently 1.90.

Governments have difficulty appreciating that the massive growth will occur in older age groups ... that penny has not dropped federally or at a state level

Structural Ageing: South Australia: Change by Age: 2006-2021, 2006-2031

Source: ABS Projections 2008, Series B, based on Jackson 2004



*the State's 30-year plan is a plan for expanding the number of young households
—in fact that is going to be a very small part of growth
—we are going to see a massive growth of older households

we should be striving towards a future Australia which is what Australians want, not what politicians want, and not what a handful of experts want*

Professor Graeme Hugo, April 2012

Professor Hugo considered Australia better placed to face demographic challenges of the next 2-3 decades than any other OECD country. Most importantly, there is a need for an informed national discussion inclusive of all groups, and for careful planning of population strategy balancing need for some growth with environmental constraints.

Kelly Henderson

Over the next couple of decades nothing will impact OECD economies more profoundly than demographic trends and, chief among them, ageing

Jean-Philippe Cotis, Chief Economist, OECD, March 2005

Cirque du Soleil contacts

- Corporate Headquarters:** 8400 2nd Avenue, Montreal, Quebec H1Z 4M6, CANADA
- Senior Director, Public Relations:** Renée-Claude Ménard, Email: rcm@cirquedusoleil.com
- Corporate PR Manager:** Chantal Côté, Email: chantal.cote@cirquedusoleil.com
- Global Citizenship:** Gil Favreau Email: gil.favreau@cirquedusoleil.com
- OVO in Adelaide:** Kylie Brown/Katie Gleeson, Look Both Ways (08) 8301 2407
- Founder and Co-Chief Executive Officer:** Guy Laliberté
- President and Co-Chief Executive Officer:** Daniel Lamarre
- Vice-Presidents:** Gilles Ste-Croix; Éric Fournier
- General Manager:** Aldo Giampaolo
- Directors:** Dominic Champagne; René Richard Cyr; Fernand Rainville; David Shiner; Robert Lepage; Deborah Colker; Gilles Maheu; Francois Girard; Jamie King; Vincent Paterson; Franco Dragone; Criss Angel

[Car]Park 24: Boycott of Cirque du Soleil

After years of using Bonython Park, Port Road, Cirque du Soleil proposes to occupy Park 24, north of Sir Donald Bradman Drive—giving rise to calls for a boycott.

In July—after APPA's June 2012 Media Release opposed Cirque du Soleil bitumising Park Lands—the Montreal company's Senior Director of Public Relations, Renée-Claude Ménard, confirmed Cirque du Soleil intends to lay a bitumen surface in Park 24 for this year's OVO tour.¹

Ironically, OVO claims to be 'a headlong rush into a colourful eco-system teeming with life ... a world of biodiversity and beauty',² but wants to bury actual Park Lands biodiversity with road-base, bitumen and heavy equipment, for many months and private profit. The 'OVO' Village will consist of the contents of approximately 74 shipping containers, replete with generators, fuel and propane tanks, an army of airconditioners, a school, catering/kitchen, laundry, toilets, showers, massage room, workshops, merchandising and box office sales buildings, site and technical shops, living quarters, and VIP tents; needs fire access roadways, and also wants 'onsite parking ... for up to 700 vehicles per show'.³

The OVO proposal to impact over 36,000m² of Park 24—15,000m² of car parking, 21,000m² of fenced trafficable area and hardstand (compacted gravel and bitumen), plus heavy vehicle entry and access routes—is blatant hypocrisy and abuse: a headlong rush into an environmental and 'consultation' farce. At its Perth site, Cirque du Soleil will:

- use a more efficient layout taking 16,000m² of Langley Park Reserve, and manage with only 120 off-site VIP vehicle spaces;
- pay a hire fee of \$135,356, a \$20,000 bond, and restoration costs in the order of \$100,000;
- as a non-complying event, meet requirements of the *Environmental Protection (Noise) Regulations 1997*.⁴

Accused of lobbying Canadian environmental groups,⁵ in fact APPA notified Cirque du Soleil their 2012 OVO and 10-year proposals were unacceptable.

In 2000, Cirque du Soleil's event 'caused a large amount of damage' to Park 24 and '[f]ull remedial works took almost 1 year ... causing long-term disruption'.⁶ In 2001, the Conservation Council of SA nominated Bonython Park as a more appropriate venue for Cirque du Soleil's 'Alegria', to avoid damaging native plants in other areas.⁷ Cirque du Soleil accepted, and used Bonython Park in 2005 and 2007.

Responding to council's Cirque du Soleil 2012 OVO and 10-year agreement consultation, APPA cited Cirque du Soleil's appalling track record in Bonython Park; the 2005 Lord Mayoral suggestion for relocation to Wayville Showgrounds; Park 24 event degradation; unsustainable commercial high-impact use; conflicts of interest, and Council's 'breathtakingly hypocritical' mixed messages on car parking, reinforcing the view Adelaide City Council is 'failing abysmally in its statutory responsibilities' as custodian.⁸ The Adelaide Showground pointed out fees proposed to be charged to Cirque du Soleil were artificially cheap, representing a ratepayers' subsidy contrary to South Australia's Competitive Neutrality Policy, and stated existing facilities should be used, not Park Lands.⁹ Others castigated the consultation process as 'quite compromised' and 'corrupted'.¹⁰

the public feel that such 'consultations' are of no consequence and indeed merely a bureaucratic box ticking exercise

Public submission on Cirque du Soleil's 'OVO', ACC CSEFC Agenda 8 May 2012, p 50.

On 17 February, a month before council commenced public consultation (14 Mar–4 Apr), and three months before the public decision to grant a lease (22 May), Cirque du Soleil published its OVO Park 24 location to the world:

*Adelaide - From December 6 2012, at Tambawodli (Park 24), just off Sir Ronald [sic] Bradman Drive ... [tickets] on sale to the general public ... February 20 2012.*¹¹

Cirque du Soleil aspires to be 'a responsible agent of change' that 'conducts itself in a way that shows respect for ... the environment'¹² with a Responsible Procurement Policy.¹³ Ignoring overwhelming community opposition, lack of native vegetation mapping, and no real consideration of environmental or social impact in Cirque du Soleil's OVO and 10-year Park Lands proposals shows this is empty humbug.¹⁴

Who is Cirque du Soleil?

Founded by Montreal street performers, the 'circuit of the sun' has morphed into a massive commercial business: merchandising Cirque du Soleil products; partnering with Las Vegas and Macau casinos, Dubai real estate and investment companies, and clothing and accessory designer Desigual; and announcing in 2008 that strategic partners Nakheel and Istithmar World had obtained 20%

of Cirque du Soleil.¹⁵ Cirque du Soleil trumpets its International Headquarters as being located where it:

*could have the greatest possible positive influence ... to take an active part in the rehabilitation of ... one of the biggest urban waste disposal sites in North America.*¹⁶

In Adelaide, Cirque du Soleil would fence and bitumise Park Lands for its profit, giving 'budget relief'¹⁷ to council's Park 24 Event Venue project, mooted (in part):

- because events have damaged other areas of Park Lands, and
- to 'spread the pain' of noise-polluting commercial amplified music concerts (to areas of lower socio-economic status, thereby reducing complaints from demographically richer areas).

A Trojan horse for bitumising Park Lands and native vegetation, Cirque du Soleil is a *de facto* council partner/sponsor for:

- Council expanding its UPark carparking business in Park Lands;
- anti-competitive use of Park Lands as commercial carparks and hire venues;
- commercial exploitation.

Cirque du Soleil's Park Lands performances should be boycotted.

Kelly Henderson

1. *Weekly Times Messenger* 18 July 2012, p 49.
2. Cirque du Soleil Press Release 17 February 2012.
3. Adelaide City Council (ACC) City Culture and Community Services Committee (CCCSC) Agenda 13 March 2012 pp 4–12; Adelaide Park Lands Authority Agenda 8 March 2012, pp 12–19.
4. City of Perth Council Agenda 3 April 2012, pp 31–41 plus Map.
5. *The Advertiser* 11 July 2012, p 8.
6. ACC Development Assessment Committee Agenda 28 May 2001, p 1615.
7. Conservation Council of South Australia Inc. letter to ACC, 1 May 2001.
8. ACC Community Services, Events & Facilities Committee (CSEFC) Agenda 8 May 2012, pp 51–55; CCCSC Agenda pp 39–46.
9. ACC CCCSC Agenda 3 July 2012 pp 51–52, and www.abc.net.au/news/2012-07-03/park-lands-asphalt-showgrounds/4107026.
10. ACC CCCSC Agenda 3 July 2012.
11. Press Release 17 February 2012.
12. www.cirquedusoleil.com/en/about/global-citizenship/sustainable-development.aspx.
13. Effective 1 January 2009.
14. ACC CCCSC Agenda 3 July 2012 pp 3–123.
15. Press Release 1 June 2011, www.cirquedusoleil.com/en/press/news/2011/desigual-partnership-announcement.aspx; respectively, one of the world's largest privately held real estate developers, and a private equity / investment arm of Dubai World (one of the world's largest holding companies); Cirque du Soleil Press Release 6 August 2008, www.cirquedusoleil.com/en/press/news/2008/news122.aspx.
16. www.cirquedusoleil.com/en/about/global-citizenship/community/international-head-quarters.aspx.
17. ACC CCCSC Agenda 3 July 2012, p 6.

APPA'S 25TH ANNIVERSARY EVENT

It is traditional to celebrate notable anniversary dates with appropriate festivities, but APPA's 25th anniversary event was not a traditional celebration. On Sunday 29 April 2012, more than sixty APPA members came together to reminisce and to discuss future scenarios for the Adelaide Park Lands. But every member in attendance that afternoon would have preferred that the need for the formation of the Adelaide Park Lands Preservation Association had never existed in the first place and, therefore, there would not have been a reason for their gathering that Sunday.

The first Park Lands preservation movement was formed in 1869 by citizens concerned for the wellbeing and preservation of Colonel William Light's legacy to the people of South Australia. APPA became the 20th (and now 21st) century incarnation of that same community concern when the Association was formally constituted on 27 April 1987. *The Advertiser* (when it was a newspaper and not just a subsidiary of the property and business lobby, as it is today) of 9 March 1987 reported that:

A public meeting to discuss the future of Adelaide's parklands will be held by the Friends of the Parklands at Edmund Wright House, King William Street, city, at 7.30 p.m. tomorrow. Overall plans for the parklands, who controls their future and other matters will be discussed.

**APPA's
NEW POSTAL
ADDRESS**
**PO Box 7334
Hutt Street
ADELAIDE SA 5000**

**NEXT NEWSLETTER COPY
DEADLINE:**

25 September 2012

Always in search of pithy articles, educational information and comment on current issues



Above: Patron Dr Lynn Arnold AO, Master of Ceremonies for APPA's 25th anniversary.

With more than one third of the original Park Lands lost to annexation and development, further threats, exploitation and alienation continue. Although there might be little to celebrate, APPA members should comfort themselves with the certain knowledge that without the watchdog and advocacy efforts of Park Lands preservation bodies past and present the situation for the Adelaide Park Lands would be even more dire.

And so, when APPA members gathered for APPA's 25th anniversary event that was not a celebration, we were still able to enjoy each others' company for a few hours of respite in the splendid 19th century Old Methodist Meeting Hall, designed by Edmund Wright. The

Meeting Hall fortunately survived the 1976 demolition of the Pirie Street Methodist Church, to which it was originally attached. This venue had a certain resonance because APPA was conceived at the meeting on 9 March 1987 in Edmund Wright House, which itself was saved from demolition after a massive community campaign for its preservation.

The program got under way to the silky accompaniment of the Classique String Trio, comprising violinists Elizabeth Collins and Jenny Symonds, and cellist Sherri Handley. These gifted musicians first met in 1989 as members of the Adelaide Symphony Orchestra. APPA members were able to socialise for an hour or so enjoying a variety of canapés



Above: APPA's Committee for 2011-12 and Patron, from left to right—Brian Mitchell (Secretary), Philip Groves (Treasurer and Deputy President), Luciana Larkin (Committee Member), Kelly Henderson (President), Kyle Penick (Committee Member) and Dr Lynn Arnold AO (Patron). Missing from photo: Michael Sando (Committee Member).

Adelaide's Park Lands should not be a 'political football.'

and drinks, with the Trio performing in the background from their light classical repertoire. A dedicated but all too brief performance by the Trio followed, when their musicianship was on full display. The Meeting Hall's surprisingly good acoustics also complemented the performance.

Patron of APPA, Dr Lynn Arnold AO, who seamlessly performed the role of Master of Ceremonies for this event, then introduced Jim Daly. Jim was APPA's first Secretary in 1987 and subsequently a Committee Member before being elected APPA's President for three years (2006–09). Jim introduced APPA's inaugural Chairman, Damien Mugavin, who spoke about his early role.

At the time of his election, Damien was a lecturer in town planning at the SA Institute of Technology. He also holds a Bachelor of Architecture and qualifications in landscape architecture. *The Advertiser* of 2 May 1987 quoted Damien as saying Adelaide's Park Lands should not be a 'political football'. At the time, he had lived in Adelaide for only six years but became involved in moves to conserve the city's green belt to avoid a 'political dogfight approach'.

Damien was also quoted as saying 'The Association is really about the little people. There needs to be expression of the general public's views for management and restoration of the parklands', and that there was statewide concern for the Park Lands. The story also listed other matters of concern which included parkland sites used for paved courts, sports fields and associated buildings, and delays in restoring areas used for the Grand Prix and in landscaping parkland roadworks. Prophetically, Damien said that siting the Adelaide High School on the Park Lands was 'in retrospect, unfortunate and debatable', but he doubted that the school or its grounds would ever revert to Park Lands.

For many of the intervening 20 years or so, Damien was overseas working in various academic roles. When this writer contacted him in October 2011, he was Professor of the Department of Landscape Architecture and Rural Systems Engineering at Seoul National University. It transpired that Damien and his wife Susan were planning to return to Adelaide permanently in February 2012, with Damien saying to me: 'It seems 25 years has flown out of the window. However, Adelaide Park Lands are ever present; it's the, hopefully, eternal aspect of Adelaide, in just the same way as the buildings of Rome'.



Above: The 'three wise men' in full flow from left to right—lan Gilfillan, Jim Daly and Damien Mugavin.

APPA formally welcomes Damien and Susan back to Adelaide.

An informal discussion followed between Jim Daly, Ian Gilfillan and Damien Mugavin, revealing personal insights into the beginnings of the Association.

Dr Lynn Arnold then presented inaugural, continuous members of APPA with the 'Founding Member Award', bestowed on a select group of only five members 'in recognition of a longstanding and continuous commitment to the Association as Founding Member from April 1987 to April 2012'.

Heather Southcott and Ian Gilfillan were presented with their certificate awards by Dr Arnold, with APPA Secretary Brian Mitchell accepting awards on behalf of Anna Cox and Ruth and Jeffery Chittleborough, who could not be present.

It would be remiss of me not to acknowledge the contribution of magical APPA member Bernard Larkin and his colleague Jamie Nelson. Bernard and Jamie are both members of the Australian Society of Magicians and with their consummate skills they provided some sleight-of-hand amusement and diversions during the afternoon. Bernard is still working on a popular request to make all the unwanted activities and the promoters of those activities in the Adelaide Park Lands 'disappear'.

The APPA sub-committee who organised the 25th anniversary event comprised Jim Daly, Gunta and Philip Groves and Brian Mitchell, with culinary advice from Luciana and Bernard Larkin. Their collective hope is that the Association will be made redundant by State Government initiating



Above: Imogen Weston enjoys a magical experience with magician Jamie Nelson.

Below: Heather Southcott OAM is presented with her Founding Member Award by Dr Lynn Arnold AO.



measures to finally give permanent recognition and protection to Adelaide's finest natural and cultural asset, the Adelaide Park Lands.

Philip Groves

A Tribute to Her Majesty Queen Elizabeth II

The pomp and ceremony of the Duke and Duchess of York's visit to Adelaide during their 1927 Australasian tour was followed by a joyful family reunion with baby Princess Elizabeth (now HM Queen Elizabeth II), and left a lasting legacy in the Park Lands to delight children: Princess Elizabeth Children's Playground, South Terrace.

On 16 June 1927 the Royal Visit Citizens' Committee and subscribers to the Citizens' Fund (for decoration and illumination of the City, sports, Citizen's Ball, entertainments, advertising, etc) met in the Lord Mayor's reception room, Town Hall, Adelaide, and adopted Lord Mayor Sir Wallace Bruce's recommendation that unexpended funds be used to establish a children's playground, 'heartily supported by Mr. J. H. Gosse', the finance committee chairman. At Sir William Sowden's suggestion, the playground was named 'Princess Elizabeth Children's Playground', and a committee of Messrs J. H. Gosse, W. G. T. Goodman, E. H. McMichael, and H. E. Winterbottom was appointed to negotiate with the City Council and supervise the playground's creation. Their request for the Corporation to allocate a site for the playground on the understanding Council would maintain it was reported in Adelaide¹ and Hobart.²

On 21 September 1928, Adelaide City Council advertised for tenders for Contract No. 26/28 'Sanitary Conveniences and Shelter' for Princess Elizabeth Children's Playground contiguous to South Terrace adjoining the South Terrace/Goodwood Road garden:

*The Plans, Specification and General Conditions ... can be seen at the City Engineer and Surveyor's Office.*³

On 12 November 1928, the special committee appointed to consider the matter of the playground directed acceptance of the 'tender of Messrs. J. King & Son of £680'.⁴

The Opening

In September 1929, *The Register* reported on the playground's forthcoming opening:

*It was felt [the visit of the Duke and Duchess of York] could not be more fittingly commemorated than by the establishment of a playground ...*⁵

The *Advertiser* recorded that Sturt-street schoolchildren would form a 'guard of honor':

... and the same school will supply children for a rhythmic display, kindergarten games, and a demonstration of the use of the playground apparatus.



Above: The Duchess of York with Princess Elizabeth (now Queen Elizabeth II), 30 June 1927, three days after the Duke and Duchess of York's return from Australasia. Photographer: Marcus Adams. RCIN 2943822. Supplied by Royal Collection Trust/ © HM Queen Elizabeth II 2012.



Above: Princess Elizabeth (b. 1926) with lilies, 1929, at St Paul's Walden Bury, the Hertfordshire home of the Princess's maternal grandparents. Photographer: HRH The Duke of York (later King George VI). RCIN 2999926. Supplied by Royal Collection Trust/ © HM Queen Elizabeth II 2012.

*... clear blue eyes of summer, and the frank freshness of spring
... a questioning, curious child of alert movement and happy disposition ... a pale blue periwinkle fairy ...*

Description of Princess Elizabeth on her first public social engagement as a bridesmaid of Lady Mary Cambridge and Captain Henry Abel Smith, *Advocate* (Burnie, Tas) 29 September 1931, p 7.



Images from 'Scenes of the Play Hours of Children' *The Mail* 30 Sep 1933, p 18:

Above left: 'On the joy-wheel at Princess Elizabeth Playground.'

Above: '... half a dozen boys were building a mammoth castle in the sandpit, two others were concerned about the disappearance of their tennis balls.'

Left: 'Swarming through the jungle gym'.

Princess Elizabeth Children's Playground

The proceedings will conclude with an assembly of the children, who will salute the flag which will be broken out at the flagstaff'.⁶

The playground was supplied with 'see-saws, swings, sand basin, and other equipment for the amusement of children', 'a large expanse of lawn for playing', and 'a fine brick rest room'.⁷

Amongst those present ... were the Lord Mayor and Mrs. Bonython, Sir Wallace Bruce, Alderman I. Isaacs, Mr. A. A. Edwards M.P., Councillors J. R. Cain, C. R. J. Glover, and T. Flint, Messrs. W. J. Adey (Director of Education), C. Charlton (Deputy Director of Education), H. P. Beaver (Town Clerk), A. J. Morison, W. C. D. Veale (City Engineer), and A. W. Pelzer (City Gardener) ... In declaring the ground open Mrs Bonython said that the form chosen for utilising the funds was a delightful idea, and one that would appeal strongly to the Duke and Duchess, and particularly to Princess Elizabeth herself. Lord Cavan, a member of the Duke's staff ... had said that Adelaide's children's playgrounds were the best in the world. She had much pleasure in declaring yet a further addition to their number open ... Mr. A. A. Edwards, on behalf of the children of the district, expressed their appreciation of the work of the City Engineer (Mr. Veale), and the City Gardener (Mr. Pelzer) to whose efforts they were indebted for the playground. ... Miss Grace Shannon (supervisor of the ground) conducted Mrs. Bonython round, while a class of school girls gave a demonstration of rhythmic dancing on the lawn, and other children demonstrated the apparatus'.⁸

The Register-News Pictorial recorded other details, after noting that later that day the Lady Mayoress attended the Royal Adelaide Show Ladies' Day 'in black, with a brilliant ornament in her hat':

[The Lady Mayoress] Mrs. Bonython made a short speech, and released the Union Jack, which floated out from the flagstaff. Sir Wallace Bruce, who was Lord Mayor at the time of the Royal visit, then thanked her for performing the ceremony. A visit of inspection was then made round this fifth children's playground, which is on an acre of ground, laid out in lawns, shade trees, and flower beds, and equipped with playing apparatus. There are also a shelter shed, sanitary accommodation, wading pools, sand heaps, besides a well-built brick office for the supervisor'.⁹

Kelly Henderson

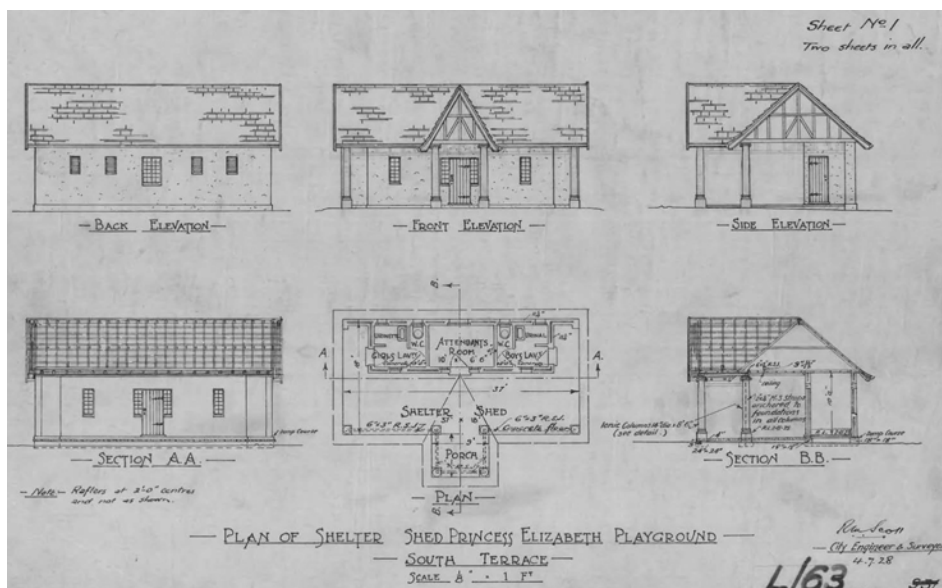
I can imagine Princess Elizabeth being quite thrilled at the playground. She is a little girl, just like you, and enjoys things even though she is a princess

Lord Mayoress Lady Bonython, 17 September 1929, on opening the Princess Elizabeth Children's Playground, South-terrace West, Park Lands, reported by *The Register News* 18 September 1929, p 14.



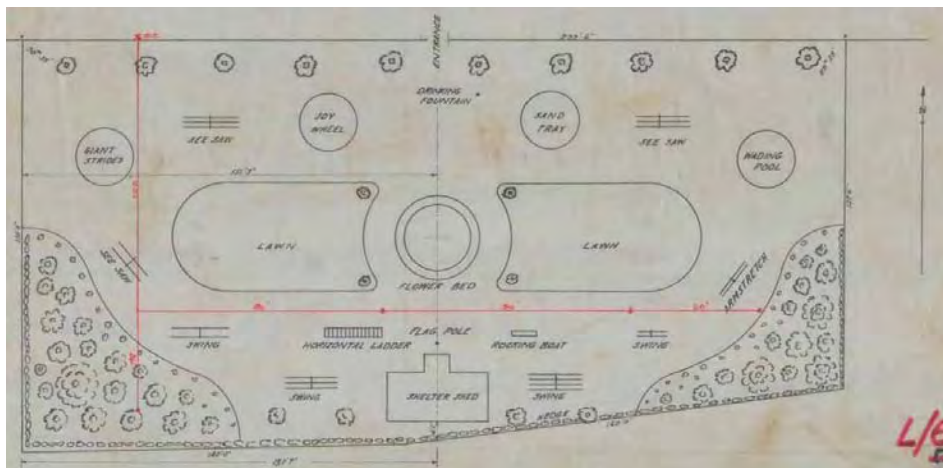
1. *The Advertiser*, Fri 17 June 1927, p 16.
2. *The Mercury* (Hobart, Tas) June 17 1929, p 17.
3. *The Register*, Fri 21 September 1928, p 16.
4. *The Register*, Tue 13 November 1928, p 13.
5. *The Register News-Pictorial* Fri 13 September 1929, p 36.
6. *The Advertiser* Tue 17 September 1929, p 19.
7. *The Advertiser* Wed 18 September 1929, p 20.
8. *Ibid.*
9. *The Register News-Pictorial* 18 September 1929, p 14.

Above: The Queen's Diamond Jubilee official emblem, the winning design from a national competition for children 6-14 yrs, drawn by 10-year-old Katherine Dewar, Chester, UK.



Above and below: City Engineer's Department Plan No L63/1928 Plan of Shelter Shed 4.7.28 (Sheet No.1 of 2), and detail of Plan No L65/1928 Plan of 'Princess Elizabeth' Childrens Playground 31.8.28 (Sheet No.2 of 2).

Source: Adelaide City Archives Accession 6187. Supplied by Adelaide City Archives.



ADELAIDE HIGH SPRAWL—CAT 3

In yet another example of moral, policy, and planning bankruptcy, government is hellbent on sprawling Adelaide High School further into Park Lands at Ellis Park (Park 24), ignoring the Adelaide Park Lands Authority's advice (10 November 2011):

[The Authority] cannot support the planned expansion of Adelaide High School beyond the current site boundaries ... [and advises the government to] pursue expansion ... within the built form of the City ...

Ignoring the Authority's call for council to withhold support, on 3 April 2012 council's City Design and Character Policy Committee recommended that council grant a 42-year lease of part of Park 24 (Ellis Park) to the Minister:

at effectively no charge ... [and] waive its Park Lands related policy ... on the proviso that there be no further expansions of Adelaide High School into the Park Lands.

On 24 April 2012, council voted to grant the lease and allow expansion of Adelaide High School. This shameful vote was carried 6/5.² For: Deputy Lord Mayor David Plumridge AO, and Crs Abiad, Hender, Llewellyn-Smith, Malani, Williamson. Against: Crs Clearihan, Hamilton, Henningsen, Moran, Wilkinson.

The Department for Education and Child Development's building application (by JPE Design Studio, dated 27/6/12), coyly claims the \$15 million works are '3-storey additions to existing buildings'. The Development Assessment Commission (DAC), whose public notification period closed on 22 August, is more forthright.

Additions and alterations ... including construction of a new three storey building ... which extends into Ellis Park and includes undercroft parking, two levels above and a roof terrace; ... relocation of the existing roadway; ... car parking ... [DA020/0021/12A]

These days Park Lands consultations are usually high farce, so an earlier 15 August 2012 closing date of Registrations of Interest for the 'Adelaide High School Redevelopment Addition' Tender¹ is no surprise; unlike the non-complying Category 3 public notification that allowed

public comment and gives rights of appeal. This is a very rare bird in the Park Lands, hitherto believed extinct.

This corner of Park 24, excised for barracks in 1849, continued as the Adelaide Observatory until annexed for Adelaide High School (officially opened in 1952), but the Authority had the trifecta against further purloining: the Management Strategy; 30-year Plan, and Adelaide (City) Development Plan do not support expansion of Adelaide High School.

With the Lord Mayor lauding a new era of council-government co-operation, the Yarwood-led council is failing as Park Lands custodians, bizarrely bent upon planting buildings, bitumen, and carparks on Park Lands whilst making a 'splash' converting city streets, including on-street disability car parks, to 'parklets'.³ Council's limp 'no future expansion' is a blatant

dereliction of duty. Park Lands sites are not rewards for planning incompetence and government improvidence. With ample room for a school at Bowden on actual Government-owned land it's time to return the Adelaide High School site to Park Lands, and end government sprawl.

Kelly Henderson

1. DTEI-BM022852/Contract No:5688-MC-2012, www.tenders.sa.gov.au/tenders/tender/display/tender-details.do?id=22852&action=display-tender-details.
2. http://ncapps.adelaidecitycouncil.com/agendasminutes/files08/Agendas/Council/2012/2012_04_24Council.pdf, Item 19.
3. 'Yarwood sorry for disabled carparking foul-up', *Sunday Mail*, 4 Feb 2012, www.adelaidenow.com.au/news/south-australia/yarwood-sorry-for-disabled-carparking-foul-up/story-e6frea83-1226262753085.

FORMER OVAL YEW AXED

Yews are known to live for thousands of years and are revered as sacred 'witness' trees. In June, APLA Board Member Gunta Groves asked about a healthy young centenarian yew's untimely demise. In reply, this yew had been 'possibly the oldest and largest of its type in the Park Lands'. It survived relocation within Pennington Garden West when Adelaide Oval's eastern stands were developed by the South Australian Cricket Association (2002–03).

The yew was axed by Adelaide's Stadium folly, despite SACA 'Yes-Vote' assurances significant trees would be transplanted by the Stadium project. On 14 October 2011 in a 'planning' charade, the Department for Transport, Energy and Infrastructure

applied for approval ('Redevelopment of Adelaide Oval', DA 020/0044/11, DAC 27 October 2011) apocryphally chirping that Park Lands used for the Oval were owned by the 'Government of South Australia'. Aided and abetted by over 25 years obstruction of State Heritage listing, axing approval was fast-tracked.

Dozens of trees in the Oval's vicinity have been destroyed by government-funded tree-fellers, seeking to maximise carparks and hard surface. Many more are on death row, and councillors have been valiantly defending part of the nation's landscaping heritage, John Ednie Brown's white cedar avenue, from government machinations.

Kelly Henderson



Above: (Former) Irish Yew Conifer (*Taxus baccata* 'Fastigiata'), Pennington Garden West. Photo: Adelaide Park Lands and Squares Cultural Landscape Assessment Study (David Jones, 2007). Supplied by Adelaide City Council.

If you would like to keep in touch with what the APLA Board is dealing with each month, please contact Gunta Groves at <ggroves@chariot.net.au> or telephone 8336 8424 and you can receive a monthly newsletter.

NEW MEMBERSHIP APPLICATION FORM

Adelaide Park Lands Preservation Assoc Inc PO Box 7334 Hutt Street SA 5000

Name

Address

Telephone E-mail Date

- \$25 single (full rate) Send *Park Lands News* via e-mail
- \$30 family (full rate) Donation \$.....
- \$35 corporate
- \$15 single (concession)
- \$25 family (concession)

Method of payment

- Cheque attached Money order attached Electronic Funds Transfer

OBJECTIVES OF THE ASSOCIATION ARE TO ENSURE THAT:

- the Park Lands are available for use by the general public
- the public, so far as practicable, has free and unrestricted access to the Park Lands
- the Park Lands are reserved as a place for public recreation, leisure and enjoyment
- alienated areas of the Park Lands are restored for recreational use, preferably as open space
- the open space character of the Park Lands as a place dividing the City of Adelaide from the suburbs is preserved
- the Park Lands are preserved and maintained in a manner that enhances their special place in the design of the City of Adelaide
- the amenity of the Park Lands is not impaired by inappropriate development of nearby lands
- the Park Lands are included on State, National and World Heritage lists.

I agree to be bound by the Constitution of the Association. Signature

Please make cheque/money order payable to: Adelaide Park Lands Preservation Association Inc (*not* 'APPA')

Electronic Funds Transfer to ANZ: BSB: 015-310 Acc No: 4063-53172

Send to: Adelaide Park Lands Preservation Assoc Inc, PO Box 7334 Hutt Street SA 5000

08/12

Committee 2012–2013

President: Ian Gilfillan

Secretary: Brian Mitchell

Treasurer: Luciana Larkin

Committee members:

Kelly Henderson
Kyle Penick
Hamish Ramsay
Michael Sando
Shane Sody

Auditor David Carver, BK Partners

Editor/Web administrator
Kelly Henderson

DISCLAIMER

The information in this publication is presented in good faith to members of APPA Inc. While the information is believed to be correct, APPA Inc takes no responsibility for its accuracy. No liability is accepted for any statements of opinion or any error or omission. Although advertising material is accepted for this newsletter, such acceptance does not imply endorsement by APPA Inc.

MEMBERSHIP RENEWALS NOTICE

2012–13 membership renewals for the membership year 1 July 2012 to 30 June 2013 are due. When you return your renewal form, please advise of any changes to your membership details (including e-mail address if you receive *Park Lands News* by e-mail).

As always,
your prompt renewal would be appreciated as it saves APPA administrative costs in generating 'reminder' notices.

Contact

Ian Gilfillan (President)

Telephone: (08) 8333 0534
Mobile: 0429 0429 50

Brian Mitchell (Secretary)

Telephone: (08) 8263 5168

News, comments, articles and Web site suggestions:

The Editor
c/- PO Box 7334
Hutt Street SA 5000
Mobile: 0432 989 676
E-mail: appa.editor@gmail.com

Next newsletter copy deadline:

25 September 2012

Membership:

Membership of the Association is open to all who support the objectives of the Association. Members receive the *Park Lands News* four times a year.



Above: **'What were parklands, Dad?'** *The Advertiser*, 10 November 1954, p 2.