

ParkLANDS news

August 2013 Number 51



Detail: A deserted, post Crowd Theory, pre redevelopment Victoria Square; courtesy of Matthew Stanton, 27 February 2013.

Contents

President's letter ... 2	8 ... Fungi of the Adelaide Park Lands: following Autumn rain
Park Lands Alert: RenewalSA 'Great Park' ... 2	9 ... Found fungi
Editorial ... 2	10 ... HM Queen Elizabeth II Diamond Jubilee and Coronation Three Rivers Fountain
Letter to the Editor ... 3	11 ... Our Park Lands
2013 AGM ... 3	12 ... Last Victoria Square tree
Heritage Council bouquet; Lord Mayoral brickbats ... 3	12 ... 'Founder of Adelaide' breast plate
You don't know what you've got 'til its gone ... 4	14 ... The Magic Roundabout
Park Lands cancer centre ... 5	15 ... Gardens of unethical destruction
Soundwave 'unfashionable hoodlums' ... 6	15 ... Did you know?
2013 Soundwave ... before and aftermath ... 7	16 ... <i>Starting New Order In Victoria Square (1946)</i>
Signs of the times ... 7	

President's letter

WELL I DO GET PLEASURE FROM OUR PARK LANDS!!

Sometimes I find myself obsessed with finding and bemoaning the blots, the travesties, the 'what could have beens' the blindness of those who cannot see, and then I feel perhaps I have become one of those who cannot see myself!

Well not quite, but it is a wake up call to me to look about at what we HAVE got. For example, recently I looked across Victoria Park from East, West, North, and South—slowly, languorously, and although sketchy and incomplete it is breathtaking to feel the wonder of such a lovely stretching expanse of open field and open air and open sky.

It must be odd to hear me speaking thus because for years and years I have fulminated against motor sport in Victoria Park and the drawn out abuse of it with buildings, fences, roads, carparking for an intolerable stretch of the year.

That has not changed (!) but I realised I could spend my entire time of conscious awareness of the Park Lands bitter, angry, and frustrated. Hang on, that is not the point of the Park Lands! I had better allow much more time to luxuriate in their expansive hospitality; take time to be aware personally of what they are offering: to watch amateur sport; to marvel at trees grass and bush—be entertained by happy dogs and their owners, and even sense the unique avenues I drive through whenever moving into the City.

No other city can match it!

This, in part, has been the inspiration for the Adelaide Park Lands Art Prize!

We realised that by inviting people to feel their own experiences of the Park Lands and express them in artistic form as entries in the Prize, many others can share them as well. Anyone can enter. Anyone can see a subject for an entry even if in some cases that is as far as it gets, BUT DON'T FORGET TO ENJOY ENJOY ENJOY THEM. That is what they are there for.

Deputy President

APPA has a newly elected Deputy President, Damien Mugavin. I warmly welcome him to the position and look forward to his energy, wisdom and enthusiasm enhancing our efforts. As anticipated Damien gave a riveting address on open space challenges in Seoul, South Korea, at the AGM. His experience and knowledge will command respect as he takes the opportunity to represent us and defend the Park Lands.

Rundle Park

In May I introduced Jonathan Harry as a member of an APPA deputation to the Adelaide Park Lands Authority to speak on the misuse of Rundle Park. Jonathan has had first hand experience of the impact of the Garden of Unearthly Delights on that choice little corner of the Park Lands. He gave a very effective, informative summary of the damage done year by year. He put forward our recommendation that the location be alternated to give Rundle Park time to at least partly recuperate between 'beltings'.

Stephanie Johnston, our APPA representative on the Authority, spoke in support. The result is that the Authority advised the Adelaide City Council to undertake a thorough review of the impact of the event on Rundle Park.

Welcome to Ian Hordacre. We are advised the APPA committee is getting two for the price of one as Jeanette Hordacre put him up to it and they are both well involved in APPA tasks already.

Ian Gilfillan



Editorial

Whilst featuring Victoria Square in this issue we nevertheless note unethical plunder of Park Lands has accelerated under Lord Mayor Yarwood's cooperation-with-government regime. RenewalSA's 'Great Park' farce intends a commercial carve up of Park Lands, with Council's 'partnership' (see Park Lands Alert).

Despite displaying the River walled off from North Tce with high-rise, RenewalSA failed to disclose an apparently (poorly kept) secret SAHMRI-Two; Festival Theatre plaza carpark / office tower; Intercontinental Hotel expansion, and Yarwood's Stadium Event Carpark.

Lying idle over re-designation of North Terrace Park Lands to 'CBD', instead of protecting open space it seems Yarwood's Council envisages a south bank Adelaide Stadium Event ACC UPark carpark (*City Messenger*, August 27) with relocation of the Sk8 Park to accommodate UniSA and Adelaide University Park Lands high rise west of Morphett Street Bridge (p5). No doubt such unsustainable actions will be spruiked as full of 'vivacity'.

Professor Sir Peter Hall (strategic urban renewal expert and Bannon government advisor) said building on North Terrace's Park Lands was a mistake (2009); Light's vision and river vistas should be restored. Likewise, heeding Damien Mugavin's AGM address (p4), those who 'love cities' need to preserve open space:

For growing cities, open space is invaluable and it is imperative that we retain every square metre. Sometimes it is said ... the Park Lands need to be 'developed'. That view is so ignorant...

Our thanks to all contributors, especially of images illustrating the Park Lands' rich natural and cultural heritage; the National Gallery, Canberra, for permission to use the Norman Hartnell-designed HM Queen Elizabeth II coronation dress embroidery sample; Yvonne Maher for her delightful secret life of fungi—unsung marvels of the Park Lands, and to Val Pastro for her Park Lands poem.

Evidently, Park Lands are *not* CBD. —Ed.

**PARK
LANDS
ALERT**

**Adelaide's
great park**
Greater Riverbank Precinct

RenewalSA,¹ in partnership with Adelaide City Council and other state government agencies, is preparing a 'road map'—the 'Greater Riverbank Precinct Implementation Plan'—for Park Lands from Bowden to Hackney, that intends high-rise and commercial uses.

[http://www.riverbank.sa.gov.au/
Thegrandvision.aspx](http://www.riverbank.sa.gov.au/Thegrandvision.aspx)

1. The Urban Renewal Authority (trading as RenewalSA), State Government's commercial development agency, formerly known as Land Management Corporation.

Cover, detail: A deserted, post Crowd Theory, pre redevelopment Victoria Square; courtesy of Matthew Stanton. Photo taken by Matthew Stanton, 27 February 2013, see <http://matthewstanton.com.au/2013-2/>. Back cover: Victoria Square, Adelaide. Photos taken by K Henderson, June 2013.

William and Francis Light Exhibition

13–29 September 2013

Adelaide Festival Centre, OzAsia Festival

See <http://www.adelaidefestivalcentre.com.au/whats-on/william-and-francis-light-exhibition.aspx>

NEXT NEWSLETTER COPY DEADLINE:

27 September 2013

Always in search of pithy articles, educational information and comment on current issues

Letter to the Editor

Britannia Roundabout, Double Trouble?

The ridiculous solution to the Britannia Roundabout traffic problem for public consumption, June 5th, enlarges but does not solve the problem.

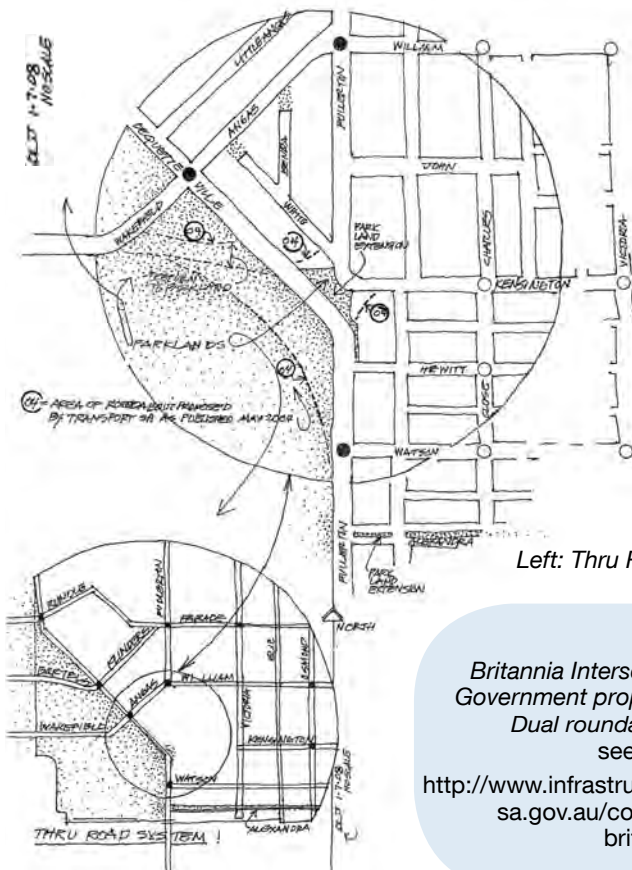
Does the idea to eliminate the intersection as visualised in the enclosed drawing need the addition of words? Does it deserve a public airing? Perhaps a graphic designer could improve the drawing.

Don Johnson
(address supplied)

Left: Thru Road System by DL Johnson, 1.7.2008 (No scale).

Right:
Britannia Intersection
Government proposed
Dual roundabout,
see p 14.

<http://www.infrastructure.sa.gov.au/content/britannia>



2013 AGM

APPA's 26th Annual General Meeting was held at 10am, Sunday 28 April at the Disability Information & Resource Centre, 195 Gilles Street, Adelaide. An address by Emeritus Professor Damien Mugavin, entitled 'You don't know what you've got until it's gone' followed formal business.

President Ian Gilfillan as Chairperson welcomed approximately 42 members and apologies were received from 15 members. The 2012 AGM Minutes were received and formally approved.

President Ian Gilfillan delivered the President's Report. Treasurer Luciana Larkin tendered the Treasurer's Annual Report for the financial year ended 31 March 2013 and reported a surplus of \$3010 for the year. (Members who would like the Income and Expenditure Statement and Balance Sheet may request a copy from the Secretary.)

The Association's Honorary Auditor, David Carver, Managing Partner of BK Partners, Chartered Accountants, was formally thanked for his services and re-appointed for 2013-14. The meeting adopted the outgoing committee's recommendation that 2013-14 rates for the membership year commencing 1 July 2013 be maintained at 2012-13 levels.

It was agreed that a proposal from the floor that APPA consider starting a small fund to encourage students to study Park Lands biodiversity be referred to the Committee.

President Ian Gilfillan declared all committee places vacant and called on Peter Austin as Returning Officer to conduct the election, and all nominees were declared duly elected:

Ian Gilfillan (President)
Brian Mitchell (Secretary)
Luciana Larkin (Treasurer)

Committee members:

Jonathan Harry, Kelly Henderson, Damien Mugavin,¹ Hamish Ramsay, Michael Sando and Shane Sody.

There being a vacancy, Mr Ian Hordacre was nominated from the floor, and this was referred to the incoming committee.²

Other business:

APPA's Editor Kelly Henderson reported National Library of Australia periodical collection specialists had reviewed the *Park Lands News* on World Heritage Day 18 April 2013 and given notice that same day of their decision to accession APPA's newsletter into the National Library of Australia, Canberra.

President Ian Gilfillan advised that a presentation was to be made to Gunta Groves in appreciation of her work on the Adelaide Park Lands Authority.

Ms Johnston and Ms Whittington reported concerns on the potential impact of

Heritage Council bouquet; Lord Mayoral brickbats

On 10 May 2013, the 1914 Wattle Day War Memorial Oak (War Memorial Drive) was confirmed on the State Heritage Register by the SA Heritage Council. The Adelaide Park Lands Preservation Association, on 12 August 2008, nominated the Oak for inclusion on Australia's National Heritage List.

The Oak is believed to be the first WWI memorial (see http://www.adelaide-parklands.org/pdfs/War_Memorial_Oak.pdf).

Below: 1914 War Memorial Oak confirmed on State Heritage Register 10 May 2013, PLACE NO: 26348; <http://www.environment.sa.gov.au/files/da4713cd-26f5-411f-a0cf-a07e01009698/war-memorial-oak-gen.pdf>.



Britannia roundabout Park Lands grab

Loss of zero Park Lands trees for the Britannia-junction upgrade is the right direction, but the Premier, Minister and DPTI still plan to grab 60m² from Park Lands. For a bouquet instead of a brickbat, the 60m² should be found from the commodious, waste-of-space, traffic island, not Park Lands. Magic mini-bouts, with tiny islands, can save Park Lands and increase vehicle throughput, see 'The Magic Roundabout' p9.

Lord Mayoral 'consultation' brickbats

It seems ACC 'consultation' farces are being phased out for a no-consultation / secret-decisions model, or relegation to government 'competitions'—enter by commenting, you can win a prize! The spirit of cooperation and collaboration evident between Lord Mayor and State Government has proven pro-concrete, pro-carparks and bad for Park Lands.

Kelly Henderson

Continued on p4

Continued from p3 (2013 AGM)

7-storey buildings surrounding the Park Lands. It was suggested that someone look into the time taken to erect and dismantle Clipsal facilities, and that APPA put pressure on Adelaide City Council to clean up all of the waterways in the Park Lands, and Ms Henderson spoke against APPA's Park Lands Art Prize exhibition being held in the Festival Centre (AFC): contrary to APPA's past policy of not carrying out activities in buildings on Park Lands, and financing, via sales commissions, the AFC is a State Government statutory entity and proponent of construction on Park Lands obtaining new office facilities on Park Lands in the Adelaide Stadium footbridge south landing. President Ian Gilfillan informed the meeting a contract had been signed with the Festival Centre Complex.

Guest Speaker Emeritus Professor Damien Mugavin's address **'You don't know what you've got 'til it's gone'** was supported by a powerpoint presentation. Professor Mugavin talked on Seoul's efforts in South Korea to reclaim lost open space. Seoul is about the same size as the greater Adelaide area but with a population of 25 million and an underground railway transporting an average of 7 million people per day. As they have very little green space they've used mountain areas of a previous rubbish dump to create a park with walking paths, and created ponds for water plants from past sewerage areas. Professor Mugavin also showed Paris had converted a disused elevated railway line into a raised garden walk through the centre of Paris before answering questions. After thanking the speaker, President Ian Gilfillan closed the meeting at 12 noon.

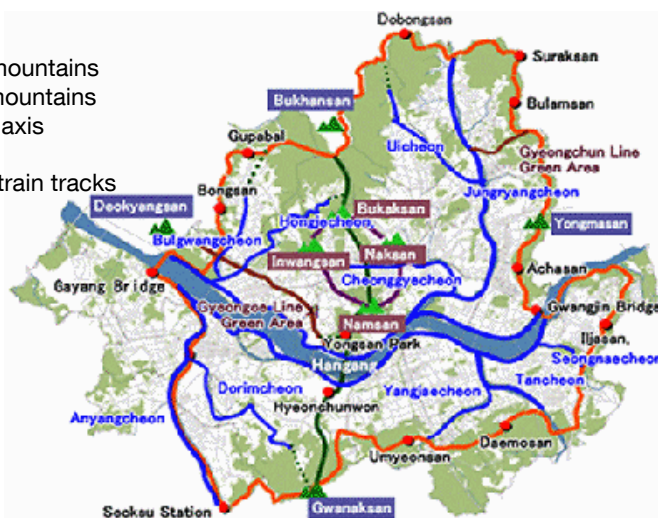
A special thankyou to Bernard and Jonathan for providing an excellent morning tea.

1. Damien Mugavin was appointed as Deputy President on 11 June 2013, at the 2012-13 committee's 2nd meeting.
2. Ian Hordacre was appointed as a committee member at the first meeting of the committee in May 2013.

Legend

- Connecting outer mountains
- Connecting inner mountains
- North-South green axis
- Stream
- Green areas along train tracks
- Connecting trail

Right: Concept Map of existing /proposed open space system for Seoul.
Source: Seoul National University.
Above: Map legend.



You don't know what you've got

'til it's gone

*You don't know what you've got 'til it's gone
They paved paradise and put up a parking lot*
Lyrics © Joni Mitchell / Crazy Crow Music

Around the world, cities are struggling to provide adequate open space for citizens. There are many examples of city governments trying to save and recover every square metre they can.

Adelaide is projected to add half its population again by 2030. Among all the effects of this rapid growth, open space will become acutely important. From my recent experience the following examples show the struggle to provide and recover open space in large cities.

SEOUL, SOUTH KOREA

By any measure, Seoul is a mega-city. Over Gyeonggi province, which is approximately similar to that of greater Adelaide, the population is more than 25 million, and still growing. The City of Seoul contains about ten million people and there is enormous pressure on every square metre of open space. Seoul is surrounded by mountains, the tallest being Mt. Bukhan, the world's most visited national park. On a fine day as many as 3 million people visit the park!

In the city, parks and open space need to accommodate intense use, so that for many parks, the 'play areas' are paved over and the play experience is somewhat stymied. The city is gradually reinstating its open space system, including mountain connectors, green axis, streams (Cheonggyecheon being the best known), even green areas along train tracks.



Above: Promenade plantée, Paris, France.
Top (left): Mount Bukhan, Seoul, South Korea; (right) Boramae Park, southern Seoul, a former Air Force base, now an intensely used urban park surrounded by high rise. Photos by the author.

PROMENADE PLANTÉE, PARIS, FRANCE

Promenade plantée: a tree-lined walkway, also known as Coulée verte, green corridor, is a parkway that runs from Place de le Bastille through Tunnel de Reuilly, in the south west of Paris.

Paris is an old city and with the exception of the 'Royal' aggrandizements, open space is not generous. In recent years many obsolete industrial areas have been wonderfully recovered, not as housing but as open space: Parc André Citroën, Parc de la Villette are examples. These parks are not pocket handkerchiefs, the latter is about 55 ha. The Promenade plantée is an intriguing example: it is built on top of an obsolete rail viaduct running through highly built-up areas for about 4 km. The corridor is well vegetated, verdant and very popular. Luckily, vegetation weighs less than trains.

So what is my take away message? For growing cities, open space is invaluable and it is imperative that we retain every square metre. Sometimes it is said that Adelaide is an anachronistic place, not keeping up with progress, and the Park Lands need to be 'developed'. That view is so ignorant: growing cities around the world can but dream of having the open space that the city of Adelaide has.

In Adelaide some visionaries know the long term value of Park Lands.

Damien Mugavin

Ed: Emeritus Professor Mugavin is a Landscape Architect with extensive experience in Adelaide and overseas.

Park Lands cancer centre

At UniSA's City West campus, on 15 June, in one of her last actions as Prime Minister, Julia Gillard announced \$100 million Federal Government grant towards creating 'the biggest precinct of its type in the Southern Hemisphere'.¹ This funding is for two multi-storey towers proposed on Adelaide's Park Lands:

- Centre for Cancer Biology (UniSA and SA Pathology),^{2,3} and
- Integrated Clinical School (University of Adelaide).⁴

With Premier Weatherill in attendance the Vice-Chancellors of Adelaide University and the University of South Australia overlooked North Terrace Park Lands from a UniSA City West campus balcony. Students and the public are denied access to these balconies. According to UniSA:

Cancer Council SA and the State Government's decision to commit equally to \$20m over five years is supported by commitments from the universities to co-fund Research Chairs in Collaborative Cancer Research ... UniSA's Vice Chancellor Professor Peter Høj ... said that it had been about 18 months in the making.

On 30 August 2013, ABC News reported 'Julia Gillard is set to receive an honorary professorship by the University of Adelaide'.⁵ According to *The Australian* Ms Gillard is 'to become a professor of politics'.⁶

Government largesse for construction on Park Lands should be considered an act of political suicide; structures plotted for over 18 months, a public scandal. The effrontery of designating North Terrace Park Lands as 'CBD', shows the infamous impotent *Adelaide Park Lands Act* is a fine instrument for butchering Light's Park Lands and Plan.

Kelly Henderson

1. http://www.unisa.edu.au/Media-Centre/Releases/40m_federal_government_backing_for_SA_Pathology_Centre/.
2. \$60m Funding Boost for New West-End Integrated Clinical School Building, <http://health.adelaide.edu.au/west-end/>; <http://www.adelaide.edu.au/news/news62061.html>.
3. UniSA News September 2010; <http://w3.unisa.edu.au/unisanews/2010/september/story3.asp>.
4. \$40m boost to cancer research, *Alumni Update*, 2013 Issue6, http://w3.unisa.edu.au/alumni/alumniupdate/alumniupdate2013_6.htm.
5. <http://www.abc.net.au/news/2013-08-30/gillard-to-receive-honorary-professorship/4926038>.
6. 31 August 2013, <http://www.theaustralian.com.au/national-affairs/professor-gillard-steps-up/story-fn59niix-1226707894269>.

Top right: Design concept images, Integrated Clinical / Medical School, prepared by Lyon Architects for the University of Adelaide. **Right:** University of Adelaide Vice-Chancellor Bebbington with Premier Weatherill & (former) Prime Minister Julia Gillard. Courtesy of the University of Adelaide, 2013. **Far right:** UniSA Vice-Chancellor Professor David Lloyd (at right) with (former) Prime Minister Julia Gillard and Adelaide University Vice-Chancellor Bebbington. **Above right:** Design concept image. Courtesy of University of South Australia, 2013.



NORTH TERRACE MORPHETT STREET BRIDGE



Soundwave 'unfashionable hoodlums'

On 16 May 2012, *The Music Network* reported Perth's Claremont Council had unanimously voted to 'prosecute Soundwave' with legal action against Soundwave's WA promoter Chris Knight and company Altered State for alleged 'frequent breaches of sound levels'.

*Council members have worked themselves up into a rage after the March concert, even threatening to ban Soundwave and Big Day Out.*¹

Faster Louder reported council concern at concerts flouting approved sound levels, whose language was suitable for the gutter, and whose patrons brought 'appalling antisocial and criminal behavior into a residential area'.²

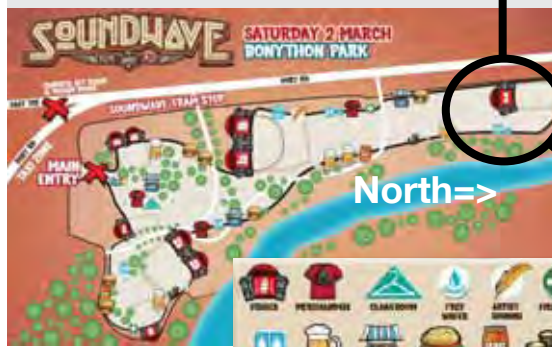
After Claremont's decision to take legal action to try and block festivals like Soundwave at Claremont Showground, Mayor Jock Barker was reported as saying issues of music festivals noise and anti-social behavior had become an increasing concern, and 'impact on ... residents is unacceptable.' Criticising the Royal Agricultural Society (which arranged the festival's lease) for failing to require adherence to sound levels, Barker revealed the March 5 public holiday Soundwave concert "excessively" breached volume restrictions and promoters were facing prosecution, with complaints from as far away as Subiaco and Mosman Park:

*It's not just about the noise, it's about trashing the town ... we get consistently ignored in terms of what we require of Big Day Out and Soundwave.*³

In Adelaide, the Council caring for Park Lands and protecting residential amenity also leases areas to Soundwave, and to the infamous FutureMusic with its history of exceeding noise limits. Both received a Bonython Park site for their March 2013 concerts. ACC allowed fencing of a vast area of Park Lands and pathways for weeks, and expansion outside the publicly consulted area by Soundwave's massive No.3 stage, after receiving:

- noise complaints from as far as Crafers;
- reports of previous concerts damaging trees that were 'never replaced';
- objections to blocked access to the Torrens Linear Park cycleway, and to creation of a 'situation that felt very unsafe', a 'dead end in the path' with insufficient notices and 'no warning';
- allegations that FutureMusic security guards were violent.⁴

Soundwave purports to prohibit mosh pits. In February 2013, three concert goers suffered major burns at Soundwave's Sydney Olympic Park concert when a magnesium flare was lit in that Soundwave mosh pit.⁵ This



Left: (top) 2013 Soundwave Bonython Park lease area (in white) approved by Adelaide City Councillors, 11 September 2012, see Note 4; (bottom) 2013 Soundwave Bonython Park site map; Stage No 3 at northern end (circled in black) and associated fencing, north, and outside, of approved lease area, blocking Torrens Linear Park south bank path, Brewery to Adelaide Gaol. Below: Soundwave Stage No. 3, Bonython Park. Photo taken by K Henderson, 3 March 2013.



we're the unfashionable hoodlums in the corner, that's completely fine with me
Soundwave organiser AJ Maddah
22 February 2013

reportedly included a teenage girl being hit with a burning piece of stage rigging.

On 24 February 2013, organiser AJ Maddah's Twitter tirade ignored Soundwave's failure to prevent mosh pits and importation of dangerous items:

[Ed: Original was not censored with #'s.]

[10.28am] *Dear piece of s### who lit the flare in the BMTM pit: Tonight you seriously burned and disfigured a young girl. I hope you f###king get yours.*

[10.30am] *If we catch anyone w/ flares you'll not only be evicted / arrested, I'll dedicate every iota of energy & money I can muster to ruin your life.*

[10.32am] *If anyone can correctly identify this son of a b#### I will shower you with so much tickets, backstage and cash you wont know what to do.*⁶

Six days later, on 2 March 2013, a mosh pit was photographed at Soundwave's Adelaide concert.

Twittered as showing 'a good whack of humanity' despite 'all the s### he gets for being a money grubbing c### of a bloke', organiser AJ Maddah is adamant Soundwave is an international festival. In February 2013, when radio interviewer Andrew Haug asked if he would feature more local acts, Maddah, who spends most of his time overseas, said

*To be perfectly honest, f###k no. Soundwave is an international festival.*⁷

Criticising local bands' lack of professionalism, Maddah pointed out various shenanigans culminated in a death threat 'because a local guitarist's girlfriend was trying to b##w' the Deftones' Chino Moreno, and said of Soundwave's lack of mainstream radio support 'we're the unfashionable hoodlums in the corner, that's completely fine with me.'⁸

What's completely fine for the Park Lands? Relegating Soundwave, FutureMusic and their family unfriendly ilk to a non-Park Lands site.

Kelly Henderson

1. 'Claremont Council votes to prosecute Soundwave', <http://www.themusicnetwork.com/music-news/live/2012/05/16/claremont-council-votes-to-prosecute-soundwave/>.
2. 26 March 2012, <http://www.fasterlouder.com.au/news/local/31994/Claremont-mayor-links-festivals-with-appalling-antisocial-and-criminal-behaviour>.
3. 'Claremont Council moves to ban festivals', *WAtoday*, 21 March 2012, <http://www.watoday.com.au/wa-news/claremont-council-moves-to-ban-festivals-20120321-1vix2.html>.
4. ACC Agenda Item 6, 11 September 2012, see http://ncapps.adelaidecitycouncil.com/agendasminutes/files08/Agendas/Council/2012/2012_09_11Council.pdf.
5. 'Fan fires flare gun at Soundwave, three injured', <http://www.3news.co.nz/Fan-fires-flare-gun-at-Soundwave-three-injured/tabid/418/articleID/288033/Default.aspx#ixzz2MSqyhd00>.
6. AJ@iamnotshouting; <http://www.pedestrian.tv/news/entertainment/aj-maddah-live-tweets-soundwaves-day-from-hell/ba64ad50-4807-4d96-b85a-c1cfeceb0881.htm>.
7. AJ Maddah Soundwave Festival Promoter interview with Andrew Haug, 22 February 2013, <http://musicfeeds.com.au/news/aj-maddah-on-more-local-acts-at-future-soundwave-festivals-fuck-no>.
8. Ibid.

2013 Soundwave ... before



Bonython Park site preparation for 2013 Soundwave and FutureMusic; Soundwave Stage 1 site; unseasonal mid-summer lush grass, knee-deep in places from heavy irrigation. Top left: Water run-off from badly-set sprinklers and over-irrigation of concert stage front-of-house area. Photos taken by K Henderson, (above) February 2013; (below) March 2013, looking south, and south-west towards Port Road.



and aftermath

The 2013 Soundwave / FutureMusic sandbowl, Bonython Park; thrashed for the profit of somewhere else's commercial corporations.

Signs of the times



Pennington West and Creswell (former) Gardens, August 2013

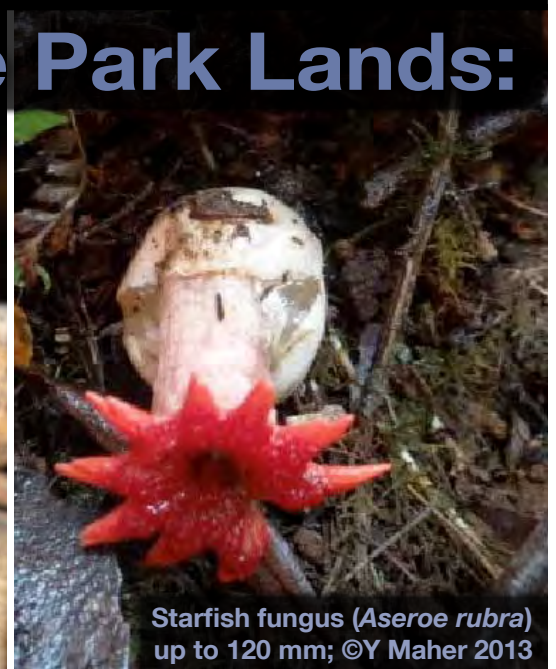
Below: Tanker (inset) and truck, Diona / Tech Drill works depot (Jun-Sep) Park 22, east of Anzac Hwy, 10 June 2013

Guidera O'Connor Pty Ltd, Bonython Park; Charles Sturt Council 'Waterproofing the West' project pipeline trench (to pump River Torrens water to St Clair 'waterfront')

Fungi of the Adelaide Park Lands:



Jelly fungus (*Tremella mesenterica*)
up to 100 mm across; ©Y Maher 2013



Starfish fungus (*Aseroe rubra*)
up to 120 mm; ©Y Maher 2013



Earth star (*Geastrum triplex*)
up to 100 mm across
©Y Maher 2013



Bird's nest fungus (*Cyathus olla*)
up to 15 mm wide; ©Y Maher 2013



Common rosegill (*Volvariella* sp)
stem up to 120
mm wide; up to
120 mm high;
©Y Maher 2013

Recent sightings in the Adelaide Park Lands (including in the Botanic Gardens). Details of photos, ©Yvonne Maher, 2013.



Wolf fart (*Lycoperdon* sp)
up to 40 mm wide; ©Y Maher 2013

following Autumn rain

Following the Autumn rain, an altogether mysterious and wonderful event occurs in our Park Lands.

Fungal hyphae which have been doing their mysterious subterranean work suddenly become active.

Soon the spider-web like structures of mycelium begin to form and work on producing what is known to us as mushrooms or fungi.



Members of the *Agaricus* species begin to emerge from their egg-like shell and reach above ground. Their job is to grow to a point where the spores held in their gills or pores are mature and ready to head into the breeze to find a new spot with suitable food.

Some Park Lands fungi have gills, some have pores, some have teeth, and some are just plain different!

Yvonne Maher

For more information on Fungi, go to: fungimap.org.au/

Found fungi

Thanks to a handful of fungi-focussed people several fungi species have been recorded in the Park Lands:

- Chytrid Frog Fungi (*Batrachochytrium dendrobatidis*): recorded in the South Park Lands, 1998
- *Cyathus* sp: Field Bird's Nest (*Cyathus olla*); Fluted Bird's Nest (*Cyathus striatus*); *Cyathus stercoreus*; *Cyathus colensoi*
- *Fomitopsis lilacinogilva*: wood rotting bracket fungus; found on logs, stumps, etc

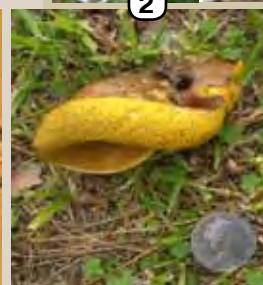
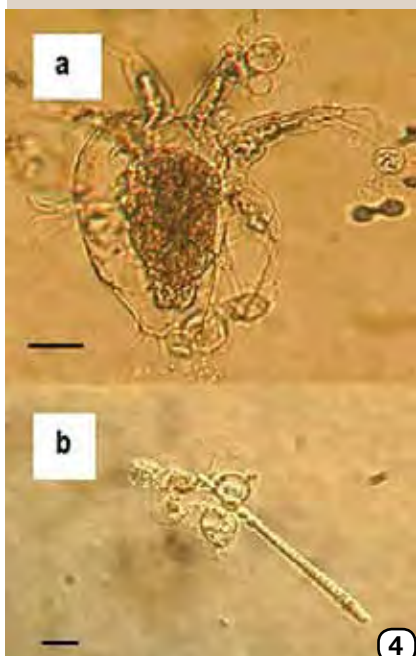
Continued on p15



Fungi found in the East Park Lands (Park 24, Glover Ave) June 2013.

Fungi found in the Adelaide Park Lands: 1. South Park Lands: 1A. Bracket fungi on log east of Beaumont Rd; 1B. Park 22 adjacent Anzac Hwy; 1C. Park 17 west of Beaumont Rd (sized with 50 cent piece). 2. North Park Lands. 3. Victoria Park. Photos taken by K Henderson, 2010–2013.

4. Zoospores of *Batrachochytrium dendrobatidis* growing on a freshwater arthropod (a) and on algae (b). Scale bars represent 30 μ m. Photo: Centers for Disease Control and Prevention, part of the US Department of Health and Human Services, August 2003. Public domain image, see http://en.wikipedia.org/wiki/Batrachochytrium_dendrobatidis. Chytrid Frog Fungi (*Batrachochytrium dendrobatidis*) grows on amphibian skin and produces zoospores; causes the disease chytridiomycosis; associated with high mortality and devastation of amphibian populations. 5. Detail of *Cyathus* on dead wood. Photo taken by Holger Casselmann, 10 September 2011; Creative Commons A-SA 3.0 Unported license, see <http://creativecommons.org/licenses/by-sa/3.0/deed.en>.



HM Queen Elizabeth II Diamond Jubilee and Coronation Three Rivers Fountain



I have in sincerity pledged myself to your service, as so many of you are pledged to mine.

Throughout all my life and with all my heart I shall strive to be worthy of your trust.

Extract, HM Queen Elizabeth II, Coronation speech, broadcast 2 June 1953

Wearing a silk dress embroidered with floral emblems of Commonwealth countries—including Australian wattle—beneath a plain white vestment, Her Majesty Queen Elizabeth II was anointed, blessed, and consecrated Queen by the Archbishop of Canterbury in a coronation ceremony at Westminster Abbey, on 2 June 1953.^{1,2}

Gracing Adelaide's Victoria Square,³ the Three Rivers Fountain's commemoration of the coronation is almost unnoticed.

On 17 June 1953, after many decades of calls for a Victoria Square fountain, Mr AGH Briskham proposed four fountains—equipped with alternating lights like Bloemfontein's—to beautify the Square.⁴

From the late 19th century onwards, Adelaide's Sir William Sowden⁵ (and later with South Australia's Wattle Day League) campaigned for Golden Wattle (*Acacia pycnantha*) to be Australia's national floral emblem, but this was not proclaimed until 1 September, 1988.



Above: Detail of the 'wattle painting', HM Queen Elizabeth II, in 1954 at Buckingham Place by Archibald Prize winning Australian artist (Sir) William Alexander Dargie (1912–2003). Photo taken by K Henderson, June 2013. Courtesy of the Public Schools Club Inc.

Top left: HM Queen Elizabeth II greets employees on her walk through NASA's Goddard Space Flight Centre mission control, Greenbelt, Md, USA. Photo Credit: NASA/Bill Ingalls, 8 May 2007. See http://www.nasa.gov/centers/goddard/news/topstory/2007/queen_egress_8.html and http://www.nasa.gov/centers/goddard/news/topstory/2007/queen_visit.html.

Below: Detail of Adelaide's Victoria Square [Three Rivers] Fountain at night time. Photo taken by Bevanweiss, 10 March 2008. Public domain image, see http://en.wikipedia.org/wiki/File:Adelaide_VictoriaSquare_Fountain_Night2.JPG.



Above: Norman Hartnell Queen Elizabeth II Coronation gown embroidery sample 1953 silk, wool, metallic thread, artificial pearls and gemstones 20.5 x 18 cm National Gallery of Australia, Canberra; Purchased 1986

Above centre: The Queen's Diamond Jubilee official emblem, winning design from a national competition (children 6–14 yrs) drawn by 10-year-old Katherine Dewar, Chester, UK



Three Rivers Fountain, Victoria Square

In 1954 HM Queen Elizabeth II became the first reigning monarch to visit Australia. To commemorate this Royal Visit Adelaide City Council decided to spend £4,510 on a Torrens Lake fountain near Elder Park.⁶

Renowned sculptor and artist John Dowie's iconic coronation fountain eventually became the focal point of the 1966 major remodelling of Victoria Square. Prior to this the Square had been divided by Grote-Wakefield Streets, and then into four quadrants when King William Street was forced through its centre, along with a north-south tramline (see Last Victoria Square tree, p12). Dowie proposed a different (Empire) design, before creating his representation of The Queen's coronation and controversial three rivers symbolism: a crown set atop granite that also supported his portrayal of the Torrens (woman with Black Swan), Murray (aboriginal man and Ibis), and Onkaparinga (woman with Heron) Rivers.

Approved by Adelaide City Council on 20 February 1967, the fountain was positioned on site on 30 April 1968.



Above: Detail 'Victoria Square remodelling - Progress of fountain and layout'. Courtesy of Adelaide City Council Archives.

The opening and first illumination of its lights, by HRH Prince Philip on 28 May 1968, was reported in Australia's capital, Canberra.⁷

On a later visit to Australia, in 1970, the first 'Royal Walkabout' took place to allow The Queen and The Duke of Edinburgh to meet more people.

Continued on p12

Our Park Lands

**Gum tree standing quietly
Amidst the traffic's speed and haste
Protected by the Park Lands
A green haven we all embrace.**

**Beginning with the Aborigines
The guardians of our land
I am sure they often gathered here
Under the gums that proudly stand.**

**Their ceremonies in the scrub
Replaced by farmers with their sheep
But to keep nature's balance
We now treasure their ancient beliefs.**

**The Park Lands a welcome refuge
From the city toil and heat
A short stroll to relax on green grass
An office worker's treat.**

**On the weekends lots of cheers and shouts
As local sporting groups meet
Circles of moving activity
In winter rain and summer heat.**

**Happy children with their parents
Enjoy a bike ride round the park
Or take their dogs for lengthy walks
As they roll in leaves and bark.**

**Many objected to the races
Of revved up motor cars
But the Park Lands are to share
For people near and from afar.**

**Remnants of the natural bush
And colourful gardens planned
A small lake with an island
And a restful garden from our sister city in Japan.**

**A few years ago I heard a story
Of an old lady who lived in a tree
Homeless, like many others
The Park Lands where they choose to be.**

**Countless commuters in cars and buses
All go whizzing by
Enjoying the variety of scenes in the Park Lands
Wishing they had time to try.**

**Our Park Lands, unique and precious
Must forever be preserved
For people to unite and enjoy them
Between the city and the "burbs".**

© Val Pastro, 2013.

My experiences with the Park Lands span 60+ years— with my own childhood experiences, then my own children for sport as well as recreation and later on the "cars" because I lived in Norwood at that time. Various circus performances, fun-runs, family reunions to name but a few ways we have enjoyed our Park Lands.

I hope your activities will highlight the unique chance we have in Adelaide for all citizens to benefit—from babies to great grandparents! Good luck!

Val Pastro, 2013.

Continued from p11 (Diamond Jubilee)

Deconstruction of the Three Rivers Fountain started in March 2013. Poorly timed removal, coinciding with the Diamond Jubilee, consigned it to storage (awaiting reconstruction at the Square's southern end) whilst its setting and site is ripped to pieces to build an event venue. As John Dowie said

destruction of our civic heritage approaches that of a major war (1980).

Kelly Henderson

1. News of the King's death was received on 6 February 1952, in Kenya, whilst Princess Elizabeth was on a tour to have included Australia and New Zealand. Chris Slack, 'The King is dead, long live the Queen: The true story of the day Her Majesty learned of her father's death', *Mail Online*, 9 January 2012, <http://www.dailymail.co.uk/news/article-2083889/King-George-VI-True-story-day-Queen-Elizabeth-learned-fathers-death.html>.
2. <http://www.thediamondjubilee.org/coronation-ceremony-and-regalia>.
3. Victoria Square was named in 1837 for Princess Alexandrina Victoria, who became Queen at the age of 18, in 1838.
4. *The Advertiser*, 18 June, 1953 p4.
5. In 1929 Sir William Sowden proposed the name for 'Princess Elizabeth Children's Playground' *The Register*, 17 June 1927, p 8, see *Park Lands News* August 2012.
6. *The Advertiser*, 9 September 1953, p2.
7. *The Advertiser*, 3 April 1930, p15; *The Chronicle*, 10 April 1930 p49.
8. *The Canberra Times*, 9 May 1968 p30; 19 June, 1968, p16.

Last Victoria Square tree

Victoria Square—named for the young Princess Alexandrina Victoria, later Queen Victoria and great-great-grandmother of HM Queen Elizabeth II—was originally vegetated with native peppermint gums.

Set aside by William Light in 1837, as 8 acres of open space to be preserved in perpetuity, the Square became the civic heart of the City of Adelaide. Ornamented with statuary raised by public subscriptions, these recognised great moments in the State's history.

Laid waste in recent months, in breach of an unknown number of resolutions of the Adelaide City Council's Victoria Square / Tarndanyangga 'Masterplan' is being used to excavate and yet-again remodel Victoria Square, also removing the only tree to have survived the Council's 1946 tree-destroying onslaught. Those earlier works removed 75 out of 96 original trees, before a special meeting of council (23 April 1946) 'to determine finally the fate of the remaining trees', retention of Moreton Bays and the popular "Flame" tree being 'favored by some members'. On 17 June 1946, commencing at 7am, the last of four remaining Moreton Bay Figs, known as the "Tree of Knowledge" was felled. Sixty-seven years later the 'Flame' tree—survivor of that war on civic heritage—was removed from Victoria Square and unceremoniously dumped into the South Park Lands.

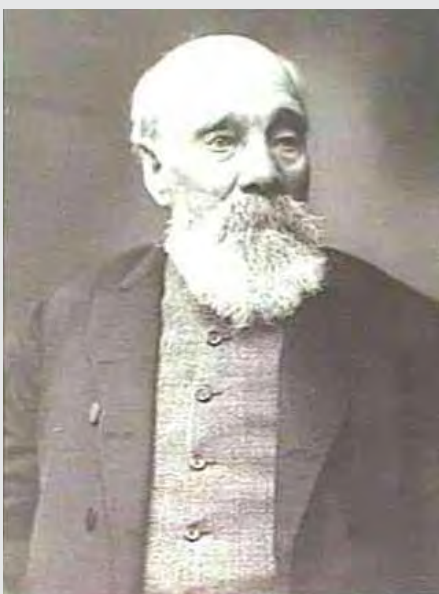
Kelly Henderson



Above: The last surviving Victoria Square 'Flame' tree (Kurrajong), formerly opposite the SA Harbours Board building, referred to as 'the only tree left standing in [Victoria] square', *The Advertiser*, 18 June 1946 p6 (below); transplanted to Osmond Garden, on the corner of South Terrace and Glen Osmond Road. Photo taken by K Henderson, June 2013.

Last Bay Fig Tree Removed
The last of the four remaining Moreton Bay fig trees in Victoria square was removed yesterday. The contractor (Mr. B. J. Wakefield) had his workmen on the job at 7 a.m. and the tree opposite the Post Office, known as the "Tree of Knowledge" by the old timers who sat under it, was felled at about 8.45 a.m.
When the clearing up has been completed the only tree left standing in the square will be the flame tree opposite the SA Harbours Board building.

'Founder of Adelaide' breast plate



Above: Charles French Folland, ca. 1900, Mortlock Library of South Australiana, State Library of South Australia, B42912; <http://images.slsa.sa.gov.au/mpcimng/43000/B42912.htm>.

Above right: Extract from memoirs of Charles French Folland, September 1910.

Charles French Folland, born in Barnstaple, Devon, England, on 18 June 1814, arrived in South Australia on the *Resource* in January 1839. He married Charlotte Vickery and died at Enfield, South Australia, on 4 September 1911, aged 97 years.

"There was also a Mr Minchin, a Local Preacher and Master Painter I fell in with. I sold him some goods in his line ... It was while I stood talking with him that a Breast Plate for Col. Light's coffin was brought to him to write.

He said to me "I don't know what to do, I can't write it."

I said "Fetch me a small camel-hair brush and a little black in gold size and I'll write it in a few minutes."

And so it came that I told him that I was by trade a writer, grainer and decorator ...

I was present at the funeral of Col Light,¹ his grave is in Light Square."

1. South Australia's first State funeral.

Editor's Note:

We are indebted to APPA member Mrs Audrey Maschmedt for bringing Charles French Folland's eye-witness account of Light's coffin breast plate and burial in Light Square to our notice.

The words 'Founder of Adelaide' are said to have been inscribed on William Light's breastplate when he was buried in Light Square in October 1839. The scribe of the breastplate inscription is also honoured with a park to this day—'Folland Park' at Enfield, named for landowner Charles French Folland. In 1837–1838 Light carried out the survey of land north of the River Torrens. Now managed by the City of Port Adelaide Enfield and protected with limited access, Folland Park, Enfield, is an important example of the vegetation that existed in the northern metropolitan area of Adelaide prior to European settlement. Folland Park was placed under a Heritage Agreement in 1989:

8 acres of mallee eucalypt and native pine woodland that has been conserved for posterity.

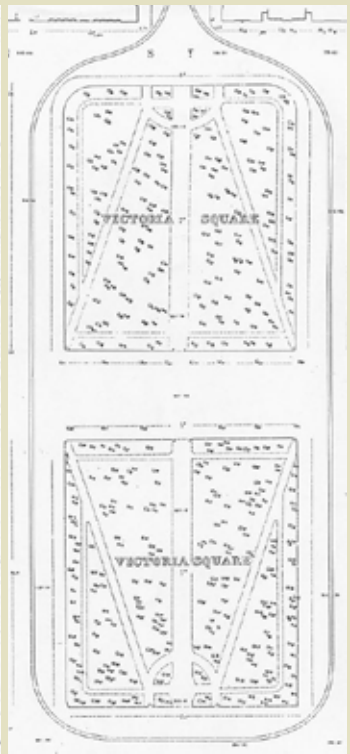
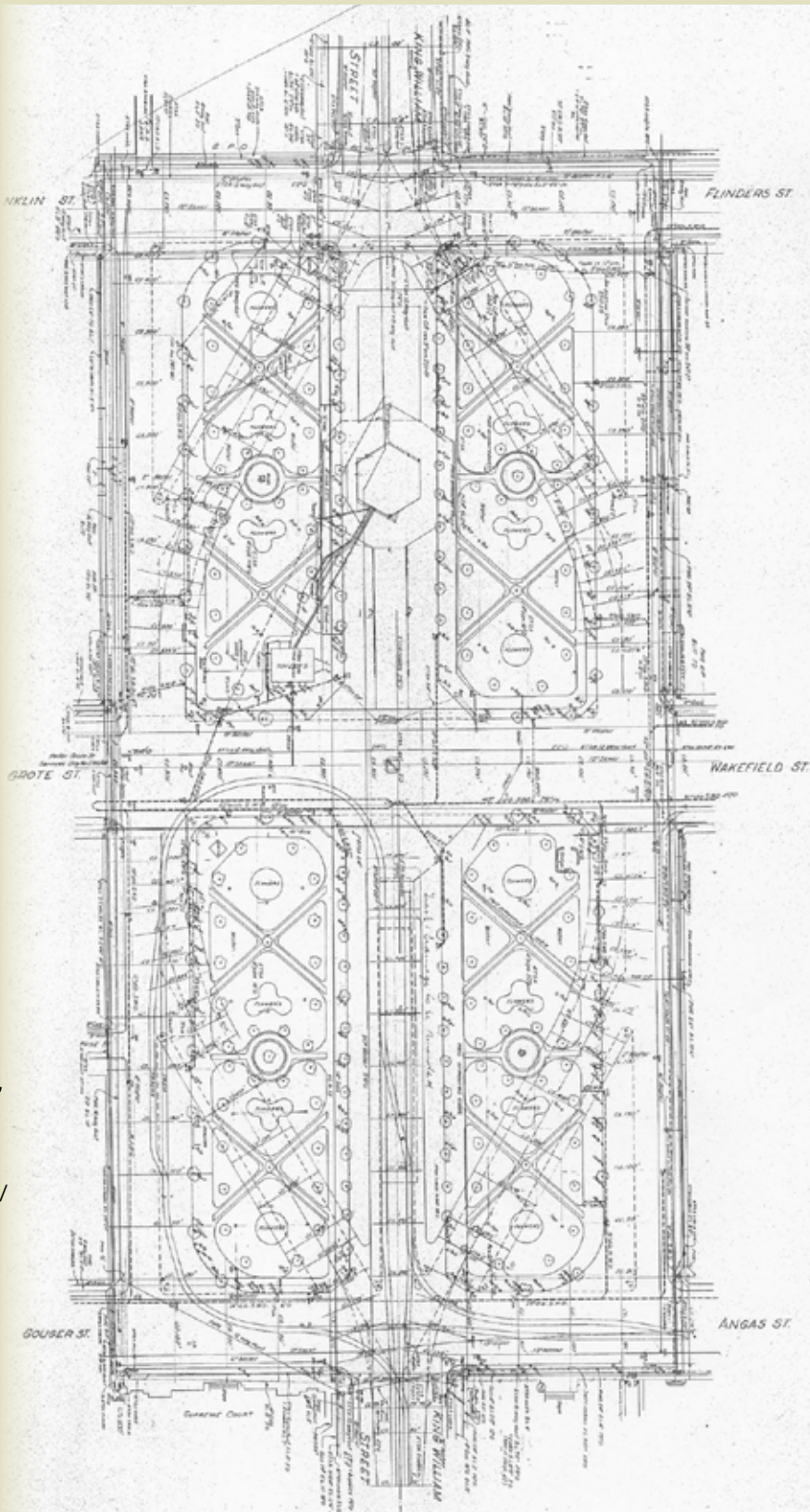
See <http://www.portenf.sa.gov.au/webdata/resources/files/FollandPark.pdf>.

Top right:
Victoria Square,
extract from the
Smith Survey
'Survey and
Plan of the city
of Adelaide'
carried out by
CW Smith,
circa 1880.

Far right
(centre):
Detail showing
the proposed
tree plantings
and path layout
using the
example of the
NW quadrant.

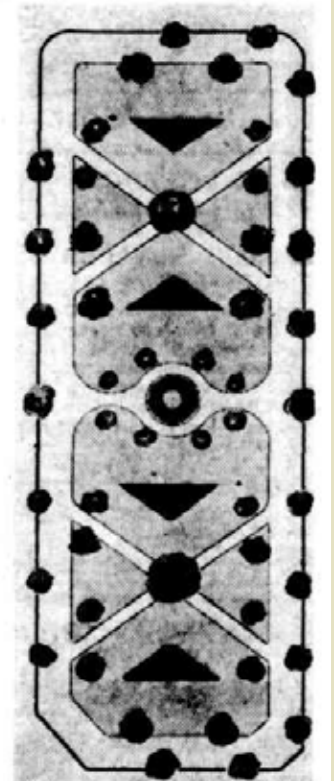
Right: Detail
of 'Plan for the
Remodelling of
Victoria Square
in 1966 as
prepared by the
Corporation's
City Engineer &
Surveyor dated
10 May 1966'.

This plan
documents
the former
four garden
quadrants,
tree plantings,
pathways,
garden beds,
and original
positions of
statues, with
the design
for the 'Three
Rivers Fountain'
and current
diamond road
configuration of
Victoria Square /
Tardanyangga.
Courtesy of
Adelaide City
Council City
Archives:
File 33/66,
B66[GE],
B67/30.



APRIL 17, 1946

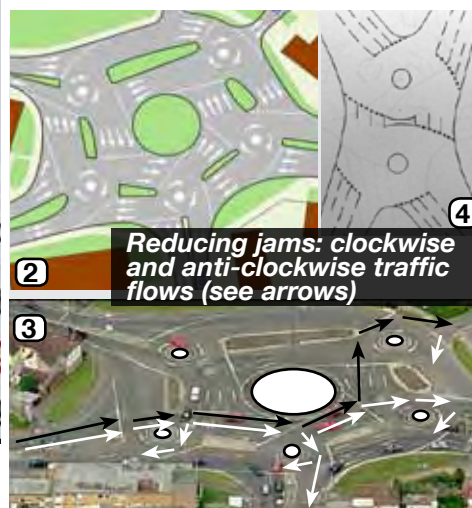
Plan For Square



Below: (left)
Light's Statue
in Victoria Square
(unveiled 27
November 1906)
prior to its 1938
relocation to
Montefiore Hill;
(right) Victoria
Square, horsedrawn
buggies and
former public
toilets.
SA Government
Photographic
Collection.
Courtesy of
HistorySA.



THE MAGIC ROUNDABOUT



Above: The Magic Roundabout, Swindon, UK: 1. Road sign; 2. Junction schematic, image Commons. <http://en.wikipedia.org/wiki/File:Swindon-Magic-Roundabout.svg>. 3. Base image: 'The man behind the Magic Roundabout' BBC Wiltshire website (2008), see footnote 3. 4. Twin mini-island multiple roundabout, UK Road Research Laboratory's 1970s solution to greater traffic throughput in constricted spaces. See 'The Magic Roundabout', www.cbrd.co.uk/indepth/magicroundabout/.

Former transport minister 'Cow Pat' Conlon reportedly almost 'choked on his coffee' at the 'plan to split Britannia roundabout into two'.¹ Alas, it seems the pollies and bureaucrats overseas jaunts missed Swindon, UK. With new-found fervour for avoiding 'new roads that would cut a swathe through the Park Lands' Premier Jay Weatherill's 4 June 2013 announcement (with Transport and Infrastructure Minister Tom Koutsantonis)² still seems to have a blindspot for nil-impact-on-Park-Lands options.

Thousands of square metres of Park Lands were coveted for this project in the past. About 60m² of Park Lands—still targeted for government misappropriation in the proposed double-hub roundabout—could no doubt be zeroed. Benefits of delaying this Park Land grab are obvious: in nine years, we've saved \$5.6m, 61 trees and 2,940m² of Park Lands, or 326.67m² per annum / 27.4m² per month! At that rate it will only take eight weeks to figure out how to save 60m² of Park Lands still under threat.

In 1963, Swindon Borough Council's principal traffic engineer, Ray Harper, took a land-hungry junction flyover plan requiring demolition of houses to UK Road Research Laboratory (RRL) researcher Frank Blackmore. Blackmore is credited with the idea for Swindon's 'magic' roundabout which has been described as 'a gene-pool cleanser' and an 'adventurous piece of engineering ... [that] well and truly put Swindon on the map'.³

Prior to his multi-ringed junctions idea, Frank Blackmore was also the 'man behind the invention of the mini-roundabout'.⁴ He realised a very small central island, giving better traffic throughput than conventional designs, was the design necessary in constricted places. At RRL's test track:

*capacity was improved by 25 to 35% simply by reducing the roundabout's central island to 3m (10ft) diameter.*⁵

After double mini-roundabout success, ring junctions with anti-clockwise internal flows were found to offer 'greater throughput than any other design for a flat junction' with 'an excellent safety record'.⁶

... a gene-pool cleanser ... well and truly put Swindon on the map

BBC Wiltshire website (2008)
http://www.bbc.co.uk/wiltshire/content/articles/2008/03/28/swindon_magic_roundabout_2008_feature.shtm

The RRL's traffic throughput solution in constricted spaces—twin; triple, and quad mini-island multiple roundabouts—culminated in a quin-island: Swindon's 'County Islands Ring Junction', dubbed 'The Magic Roundabout' by media.

Lauded as 'one of the few places where the jams have never really returned despite forty years of traffic growth', two years after being voted the UK's 'worst roundabout'⁷ (2005) by Britain's road-users Swindon's 'Magic Roundabout' was rated Britain's 7th scariest junction,⁸ and one of the world's worst road junctions⁹ (along with Canberra's London Circuit).

'Magic' junctions are flat intersections with more throughput than signalised-intersections and no costly under, or over, passes. Whilst Swindon's may look alarming, all it requires of drivers is simply

*always, always, always give priority to traffic coming from the right ... [d]eal with [the five mini-roundabouts] one at a time, ignoring the rest, and you too will come to be touched by Swindon's magic.*¹⁰

Instead of taking Park Lands, if Britannia Roundabout is a trial for drivers isn't it time to make it (and country replicas) compulsory for all practical driving tests?

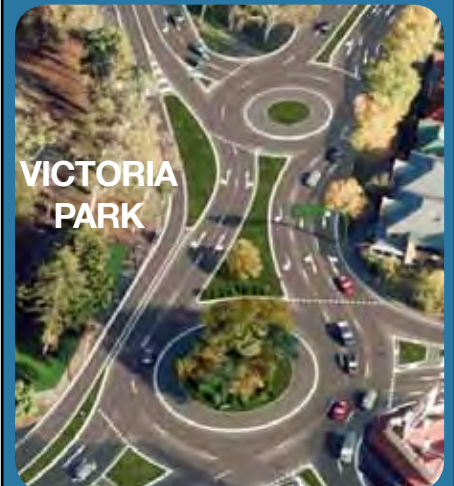
Kelly Henderson

one of the few places where the jams have never really returned despite forty years of traffic growth.

... always, always, always give priority to traffic coming from the right

'The Magic Roundabout', <http://www.cbrd.co.uk/indepth/magicroundabout/>

Dual roundabout proposed for Britannia Intersection



<http://www.infrastructure.sa.gov.au/content/britannia>

http://www.infrastructure.sa.gov.au/content/britannia/fast_facts

1. *The Advertiser*, 4 June 2013, see <http://www.adelaidenow.com.au/news/south-australia/raa-says-drivers-will-decide-if-britannia-roundabout-solution-will-work/story-e6frea83-1226657391918>.
2. Premier Weatherill / Minister Koutsantonis, 'New design to fix Britannia roundabout', News Release, 4 June 2013, see http://www.premier.sa.gov.au/images/news_releases/13_06Jun/britannia.pdf.
3. *The man behind the Magic Roundabout*, BBC Wiltshire website (2008), http://www.bbc.co.uk/wiltshire/content/articles/2008/03/28/swindon_magic_roundabout_2008_feature.shtm.
4. Ibid.
5. 'The Magic Roundabout', see www.cbrd.co.uk/indepth/magicroundabout/.
6. Ibid.
7. Insurance company survey, see 'Brits vote on the best and worst roundabouts', 20 December 2005, <http://www.easier.com/279-brits-vote-on-the-best-and-worst-roundabouts.html>; followed by Hemel Hempstead's 'The Plough' and Leicester's 'Pork Pie', Ankerdrive's 5, and the East Tamar Bridge's roundabouts.
8. <http://www.autoexpress.co.uk/car-news/29798/world-s-worst-junctions>.
9. 'London road junction scariest', 12 December 2007, BBC News, see http://news.bbc.co.uk/2/hi/uk_news/england/london/7140892.stm.
10. 'The Magic Roundabout', <http://www.cbrd.co.uk/indepth/magicroundabout/>.

Gardens of unethical destruction

Adelaide City Council's habituated misappropriation of Park Lands for 'events' robs the public of access rights to pathways and park, in favour of commercial trinketry and food and alcohol retail sales outlets. Now-annual pillaging for commercial profit provides further proof the Park Lands need to be managed as an Independent Trust.

Mocked as the 'Garden of Victorian entrepreneurs' by Peter Goers, the Garden of Uneathly Delights (GUD) offers a sideshow with dodgem cars, ferris wheel and alcohol sales outlets. It's known that Rundle Park suffers damage as a result of such events. In an Adelaide City Council decision 'Delegated to Administration', 'The [Victorian] Gardeners of Uneathly Delight' were granted 'Development Approval' on 21/1/2013 for an approximately \$9,700 erection of 'various temporary structures' (DA 931/2012 lodged 21/12/2012).¹ What was the total weight of all these structures and associated traffic? How many Tree Protection Zones?

Due to lack of tree protection zones and associated breaches of *Australian Standard 4970-2009 (Protection of Trees on Development Sites)*, avoidable damage is inevitable. Eventual tree death from root damage, after years of decline, can result from soil compaction. Thanks to 'events' (crowd compaction; heavy vehicle movements, heavy loads / structures such as shipping containers, tents, sideshow equipment, etc) Rundle Park is badly compacted and its trees harmed. The Council has proven itself unfit as Park Lands custodian by failing to require proper tree protection, in direct contravention of its own event policy.

In the wake of GUD 2013 the high farce of Park Lands 'remediation' swept large areas of Rundle Park under a shameful, superficial carpet of roll-out nylon bonded 'instant' turf. Beneath this soil-smothering tide of cynical expense lapping up gum tree trunks lurks a murky truth. *Structural root zones*—critical for tree stability—are being harmed, not only wider root protection zones (typically extending well past the outer canopy) needed for tree vitality.

Kelly Henderson

1. *Adelaide City Council Summary of Development Approved Applications, January 2013, p5.*



Left and above: Rundle Park, East Park Lands. Photos taken by K Henderson, during Garden of Uneathly Delights bump-out, April 2013.

Did you know?

'Field' mushrooms

Several species of fungi can be found in the Park Lands. As the Adelaide City Council has never carried out a full inventory or audit of Park Lands biodiversity, or fungi, there's no complete Park Lands guide to the delicious-looking-but-unpleasantly-poisonous.

Don't be fooled by seemingly-innocent 'field' mushrooms. All play their part in Park Lands ecology and many are not edible as 'Sia' found last season.

Kelly Henderson

Do not eat them they will make you ill

Under the trees springing around the mulch of the Adelaide City Park lands are masses of field mushrooms.

Go for a walk opposite St Andrews hospital and take a closer look at the inviting feast. they look like mushrooms that could be eaten but do not be fooled. Be wary.

I picked some whilst on a walk this morning. Brought them home and made the mistake of eating them for breakfast.

They tasted all right. In fact I was getting excited thinking I had a supply of fresh mushrooms just a few meters away ready for the taking.

Wrong. I spent the morning chucking. So much for my excitement.

So this is a warning to any of you who may come across the inviting feast.

Do not eat them they will make you ill.¹

1. <http://siasgarden.blogspot.com.au/12012/05/field-mushrooms-in-parklands.html>.

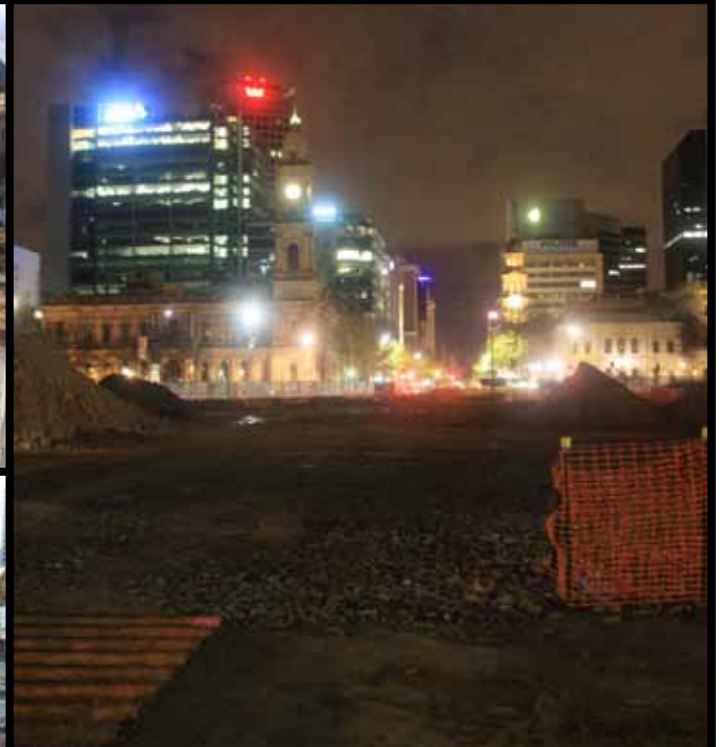


Park 17 (South Tce). Photo taken by K Henderson, June 2013.

Continued from p9 (Found fungi)

- Agaricus sp: Horse Mushroom (*Agaricus arvensis*); Yellow Stainer (*Agaricus xanthodermus*);
- Shaggy Parasol (*Chlorophyllum rhacodes*);
- Milky Conecap (*Conocybe apala*);
- Wet Rot (*Coniophora puteana*); *Coniophora arida*;
- Weathered Earthstar (*Geastrum corollinum*);
- *Ileodictyon gracile*;
- Freckled Dapperling (*Lepiota aspera*);
- Fairy Ring Champignon (*Marasmius oreades*);
- *Physcia jackii*;
- *Omphalotus nidiformis*;
- *Oudemansiella japonica var. colensoi*;
- *Psathyrella trepida*;
- *Psilocybe subaeruginosa*;
- *Punctelia subalbicans*;
- Common Porecrust (*Schizophyllum commune*);
- *Scleroderma cepa*;
- Redlead Roundhead (*Stropharia aurantiaca*);
- Yellow Brain (*Tremella mesenterica*);
- *Ramaria gracilis*;
- Stubble Rosegill (*Volvariella gloiocephala*), and
- *Xanthoparmelia tasmanica*.

Kelly Henderson



**Starting New Order In Victoria Square
THURSDAY, JUNE 20, 1946**

Practically all trees having been removed, ploughing was started yesterday as the first step towards rehabilitating Victoria square.

This photo shows a tractor drawing a plough over the crater left after the removal of one of the square's Moreton Bay fig trees.

The Advertiser, Thursday June 20, 1946

Contact

Ian Gilfillan (President)

Telephone: (08) 8333 0534

Mobile: 0429 0429 50

Shane Sody (Secretary pro tem)

Telephone: 0414 959 125

Membership:

Membership of the Association is open to all who support the objectives of the Association.

Members receive the *Park Lands News* four times a year.

News, comments, articles and Web site suggestions:

The Editor

c/- PO Box 7334, Hutt Street SA 5000

Mobile: 0432 989 676

E-mail: appa.editor@gmail.com

Next newsletter copy deadline: 27 September 2013

DISCLAIMER

The information in this publication is presented in good faith to members of APPA Inc. While the information is believed to be correct, APPA Inc takes no responsibility for its accuracy. No liability is accepted for any statements of opinion or any error or omission. Although advertising material is accepted for this newsletter, such acceptance does not imply endorsement by APPA Inc.