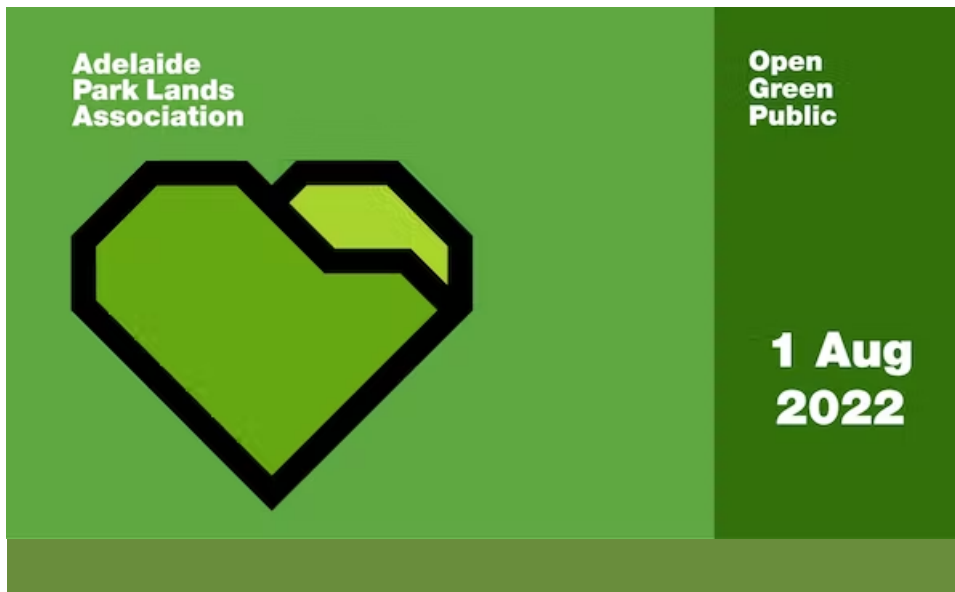


**No. 31 - 1st Aug 2022**

If this email is not displaying properly (e.g. if it's truncated or there are no pictures) [then click here to view this email in your web browser](#)

**IN THIS NEWSLETTER:**

1. [WHEN GIVEN A CHOICE...](#)
2. [HELEN MAYO PARK - PLANNING FOR RESTORATION](#)
3. [RIDE FOR BIKE SAFETY](#)
4. [HIKING ADELAIDE](#)
5. [JOIN US](#)
6. [WHAT'S ON IN YOUR PARK LANDS - AUGUST 2022](#)
7. [HOSTAGE SITES TRICK](#)
8. [FIVE-YEARLY MANAGEMENT STRATEGY REVIEW](#)
9. [NEW SPORTS BUILDING CONCEPT ENDORSED](#)
10. [SLOW DOWN AND SOAK IT IN](#)

**1. WHEN GIVEN A CHOICE...**

*by Shane Sody*

What happens when Adelaide people are given a real choice about where they would like to see a new Aquatic Centre?

674 responses to APA's community survey have delivered a strong message to the State Government: urging a win-win for both swimmers and your Park Lands, with a new Aquatic Centre in an inner suburb and restoration of the existing site.



[Read more >>>](#)

## 2. HELEN MAYO PARK - PLANNING FOR RESTORATION

*by Shane Sody*

Students from Loxton High School have been assisting Kadaltilla / Park Lands Authority in taking the first steps towards restoring the long-neglected Helen Mayo Park.



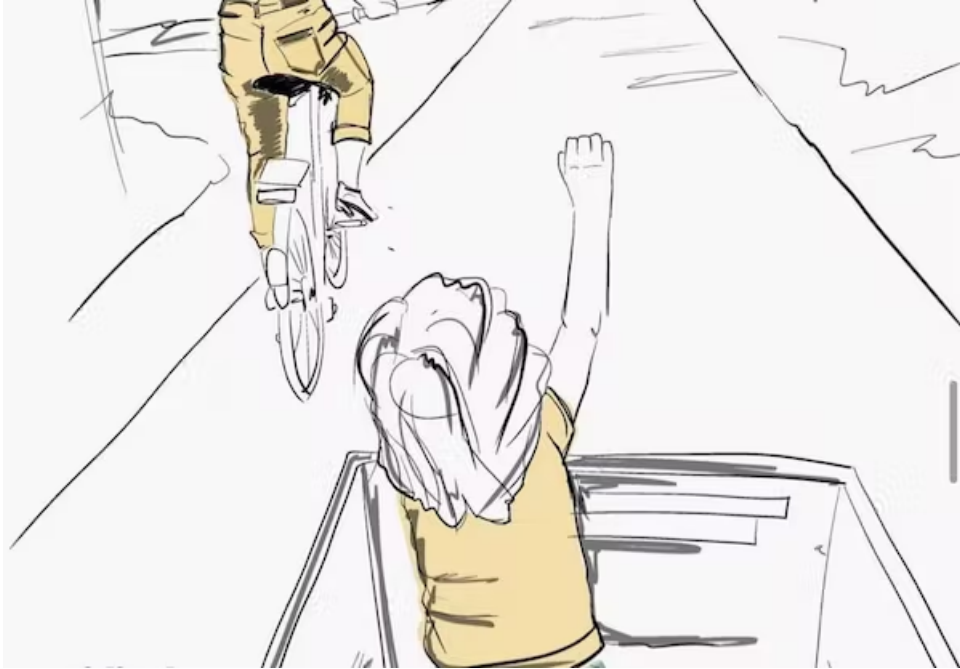
[Read more >>>>](#)

## 3. RIDE FOR BIKE SAFETY

*by Carla Caruso*

The first ride in Adelaide, as part of the global Kidical Mass movement, will kick off from your Bonython Park / Tulya Wardli (Park 27) in September.

You're invited to join a worldwide campaign, for children to be able to safely and independently travel by bicycle.



[Read more >>>>](#)

#### 4. HIKING ADELAIDE

*by Carla Caruso*

For some of us, doing the 16km Park Lands Loop is enough of an achievement.

For others, meandering the Adelaide Park Lands is a good way to stay limber before tackling longer distances, further afield. APA's Carla Caruso chatted to two SA hikers, who enjoy frequenting the city's parks in between their rural trips.





[Read more >>>](#)

## 5. JOIN US

The Adelaide Park Lands Association has four Park Lands strategies:  
[Explore, Inspire, Protect and Restore.](#)

But we are only as strong as our members. To be effective at these strategies, we need YOUR support.



You are reading the non-members version of this newsletter - which means you are not (yet) a member.

If you were to become an APA member, you would then be able to book for any of our Guided Walks for free, and you would also unlock 15% discounts to all the merch in the APA Shop.

More importantly, your membership fee (as low as \$15 per year for a single concession) would be tangible support for our Park Lands strategies:

[Explore, Inspire, Protect and Restore.](#)

What are you waiting for?

|  |  |
|--|--|
| <p>Join our<br/>team</p> <p>Become<br/>a member<br/>here</p> | <p>Book<br/>here<br/>for a<br/>Guided<br/>Walk</p> |
|--|--|



## 6. WHAT'S ON IN YOUR PARK LANDS - AUGUST 2022

by Michael Genrich

Dive into these events we've found for you, in your Open Green Public Adelaide Park Lands during the month of August 2022.

Some of them will require early booking, so don't wait!



[Read more >>>](#)

## 7. HOSTAGE SITES TRICK

by Shane Sody

The State Government has identified several Park Lands sites that it's holding hostage while demanding the release of other Park Lands site on which it wants to put enormous new buildings.

These proposed "land swaps" are being offered to make it appear as if your Park Lands would be winning.



[Read more >>>](#)

## 8. FIVE-YEARLY MANAGEMENT STRATEGY REVIEW

*by Shane Sody*

Every five years the City Council reviews the over-arching "Management Strategy" for your Adelaide Park Lands. This review is required by law. The Management Strategy guides some (not all!) future decisions about your Park Lands.

The current plan is being reviewed and you are invited to have your say.

[Read more >>>](#)

## 9. NEW SPORTS BUILDING CONCEPT ENDORSED

*by Shane Sody*

A new sports building off Goodwood Road in Golden Wattle Park / Mirnu Wirra (Park 21 West) has moved a step closer.

Kadaltilla / Park Lands Authority has approved a "concept plan" for a new two-storey building to replace an existing brick shed.

[Read more >>>](#)

## 10. SLOW DOWN AND SOAK IT IN



*by Michael Genrich*

The cool comfort of winter is a wonderful time to go walking. The welcoming walkers on our Guided Walks don't waver in wintry weather either.

On Sunday 31st July, Park Ambassador and APA President, Shane Sody led a group of twelve walkers on a two-hour tour of Bonython Park/Tulya Wardli (Park 27).



[Read more >>>](#)

#### **NEWSLETTER TEAM**

Editor: Shane Sody

Contributors: Carla Caruso, Michael Genrich

Layout: Sabrina Iqbal

Proofreader: Trish Russell

**Send content enquiries/submissions to:** [secretary@adelaide-parklands.asn.au](mailto:secretary@adelaide-parklands.asn.au)

Here at APA, we hate marketing (spam) emails. That's why we deliver news about the Park Lands, in this email format, only twice per month. If you're after more regular information, please [follow us on Facebook](#) where we are posting every day.

However, if you'd rather not hear from us in future, you can [unsubscribe here](#).