


| | | |
|--|---|---|
| Exhibition opens 24 March |  | <h1 style="margin: 0;">Adelaide Park Lands Art Prize</h1> |
|--|---|---|

No. 43 - 01 February 2023

If this email is not displaying properly (e.g. if it's truncated or there are no pictures) [then click here to view this email in your web browser](#)

| | | |
|--|---|--|
| Adelaide Park Lands Association |  | Open Green Public |
| | | <h1 style="margin: 0;">1 Feb 2023</h1> |

IN THIS NEWSLETTER:

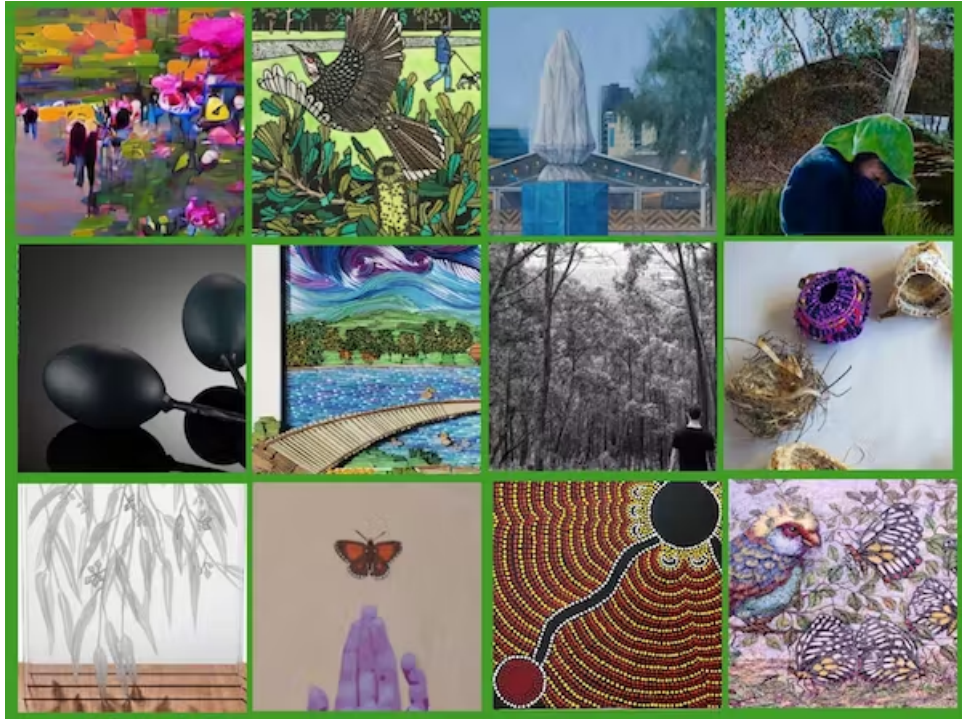
1. [RECORD FIELD OF ENTRIES TO PARK LANDS ART PRIZE](#)
2. [GOV'T TO CHOP FALCON, POSSUM, COCKATOO HABITAT](#)
3. [DOGS ON-LEASH AROUND WETLANDS?](#)
4. [WHAT'S ON IN YOUR PARK LANDS - FEBRUARY 2023](#)
5. [MAKE AN IMPACT: JOIN](#)
6. [WE ARE HIRING! WANTED: A WEEKLY, SHORT VIDEO](#)
7. [FROME PARK DISAPPEARS](#)
8. [MEET PHOTOGRAPHER LYNDON STACY](#)
9. [SKETCHING IN YOUR PARKS](#)
10. [LONG DELAYS RESTORING VICTORIA PARK](#)

1. RECORD FIELD OF ENTRIES TO PARK LANDS ART PRIZE

by Shane Sody

Hundreds of artists, inspired by your Adelaide Park Lands will need to wait for another few weeks, before learning which art works will be selected as finalists in this year's Adelaide Park Lands Art Prize.

The chair of our Art Prize Committee Nataliya Dikovskaya is thrilled by the quality and quantity of entries received from artists across Australia, who are inspired by your Park Lands, and hoping to inspire you.



[Read more >>>](#)

2. GOV'T TO CHOP FALCON, POSSUM, COCKATOO HABITAT

by Shane Sody

Ecological consultants and arborists have identified the dangers to 457 trees (providing habitat to cockatoos, possums, falcons and others) from the State Government's proposed Aquatic Centre attack on your Park 2.

Documents released for purposes of sham "consultation" have signalled the risks which could be avoided if the Government heeded community calls to build on a brownfield site instead.



[Read more >>>](#)

3. DOGS ON-LEASH AROUND WETLANDS?

by Carla Caruso

The City Council has been considering whether to require dog owners to put their pets on leash around the wetlands in the southern part of Victoria Park / Pakapakanthi (Park 16).

Park Lands lovers and City Councillor Keiran Snape want to see the change to protect bird life in the wetlands, including ground-nesting birds.



[Read more >>>>](#)

4. WHAT'S ON IN YOUR PARK LANDS - FEBRUARY 2023

by Michael Genrich

Dive into these events we've found for you, in your Open Green Public Adelaide Park Lands from late January through to the end of February 2023. Some of them will require early booking, so don't wait!



[Read more >>>>](#)

5. TEAM MEMBER MISSING: YOU!

We are a grassroots community organisation. We Explore, Inspire, Protect, and Restore.

But we are only as strong as our Members and our Volunteers.

You are receiving the non-members version of this newsletter which means you're not (yet) a Member of our team.

Will you help us to spread the word, to encourage others (especially the State Government!) to Love Your Park Lands ?

There are two ways to do that: as a [Member](#), or as a [Volunteer](#) (or both!)



If you were to become an APA [member](#), you would then be able to book for any of our Guided Walks for free, and you would also unlock 15% discounts to all the merch in [the APA Shop](#).

More importantly, your membership fee (as low as \$15 per year for a single concession) would be tangible support for our Park Lands strategies: [Explore, Inspire, Protect and Restore](#).

If you were to become [a volunteer](#), there's a wide range of things you could do to help in one or more of our strategic activities.

Check out the volunteer options [here](#).



6. WE ARE HIRING! WANTED: A WEEKLY, SHORT VIDEO

Do you know someone who's got a flair for producing short eye-catching short video clips?

We're looking for one or more up-and-comers, who can be our social media influencer: swelling our audience of thousands by helping a new younger cohort to Love Your Park Lands, 60 seconds (or less) at a time.



[Read more >>>>](#)

7. FROME PARK DISAPPEARS

by Shane Sody

The second of six Park Lands attacks by the Malinauskas Labor Government is well under way.

The last patch of green that was left on the eastern side of Frome Road in your Park 11, has now disappeared.



[Read more >>>>](#)

8. MEET PHOTOGRAPHER LYNDON STACY

by Carla Caruso

Photographer Lyndon Stacy recently has been highlighting lesser-known parts of your Park Lands, including the wetland in G.S. Kingston Park / Wirrarninthe (Park 23) and biodiversity carbon offset plantings in Reservoir Park / Kangatilla (Park 4).

This month, we put Lyndon in the hot-seat to learn more about what makes him tick.



[Read more >>>>](#)

9. SKETCHING IN YOUR PARKS

by Carla Caruso

Artists are using a variety of media as they take inspiration from your Park Lands, and inspire you to Love Your Park Lands.

While some prefer photography or other digital forms of art, a new group is finding joy in one of the oldest forms of creating imagery, putting your Park Lands onto paper with simple sketches.



[Read more >>>](#)

10. LONG DELAYS RESTORING VICTORIA PARK

by Shane Sody

If the State Government loved your Park Lands, it would assist you to get access to a part of your Park Lands that's been off limits for the past three years.

However, there seems to be no hurry to restore your Victoria Park / Pakapakanthi (Park 16) to Open Green Public any time soon.



[Read more >>>](#)

NEWSLETTER TEAM

Editor: Shane Sody
Contributors: Carla Caruso, Michael Genrich
Layout: Sabrina Iqbal
Proofreader: Trish Russell

Send content enquiries/submissions to: secretary@adelaide-parklands.asn.au

Here at APA, we hate marketing (spam) emails. That's why we deliver news about the Park Lands, in this email format, only twice per month. If you're after more regular information, please [follow us on Facebook](#) where we are posting every day.

However, if you'd rather not hear from us in future, you can [unsubscribe here](#).