

Exhibition open until 7 May		<h1 style="margin: 0;">Adelaide Park Lands Art Prize</h1>
--	---	---

No. 48 - 15 April 2023

If this email is not displaying properly (e.g. if it's truncated or there are no pictures) [then click here to view this email in your web browser](#)

Adelaide Park Lands Association		Open Green Public
		<h2 style="margin: 0;">15 Apr 2023</h2>

IN THIS NEWSLETTER:

1. [SAVE MIRNU WIRRA'S BIODIVERSITY](#)
2. [PREMIER NEEDS MORE ENCOURAGEMENT](#)
3. [WHICH PARKS LANDS ARTWORK FOR YOU?](#)
4. [HAVE YOU VOTED YET?](#)
5. [JOIN GREEN PAKAPAKANTHI](#)
6. [WE NEED YOU - PLEASE JOIN US](#)
7. [EQUESTRIAN FESTIVAL RETURNS](#)
8. [IGNORING THE ELEPHANT](#)
9. [TRAVELLING YOUR PARKS](#)
10. [WORLD CONGRESS ON SUSTAINABLE PLACES](#)
11. [THE MAGIC OF MUSHROOMS](#)
12. [HERDING BATS](#)
13. [WHAT'S ON IN YOUR PARK LANDS - APRIL 2023](#)
14. [MOTOR RACING TRUMPS EVERYTHING](#)

1. SAVE MIRNU WIRRA'S BIODIVERSITY

by Shane Sody

Citizen scientists are hastening their efforts to identify the extent of biodiversity in your southern Park Lands, before the State Government carries out current plans to destroy eight hectares with a new security-fenced police compound.

So far, the Government has shown no sign of Loving Your Park Lands.



[Read more >>>](#)

2. PREMIER NEEDS MORE ENCOURAGEMENT

by Shane Sody

In Adelaide's corridors of power, senior bureaucrats and politicians are often listening to advice from property developers, but they rarely seek out or heed the views of the thousands of South Australians who Love Your Park Lands.

Nevertheless, on 1 April, two separate events might have prompted some within senior levels of the Government to re-think their series of attacks on your Park Lands.



[Read more >>>](#)

3. WHICH PARKS LANDS ARTWORK FOR YOU?

by Shane Sody

You can secure an instant tax-write-off for your business by buying and proudly displaying one of the finalist artworks from the 2023 Adelaide Park Lands Art Prize.

Browse the 80 works on display at the Festival Centre or in our on-line catalogue.

But grab your favourite before someone else does!



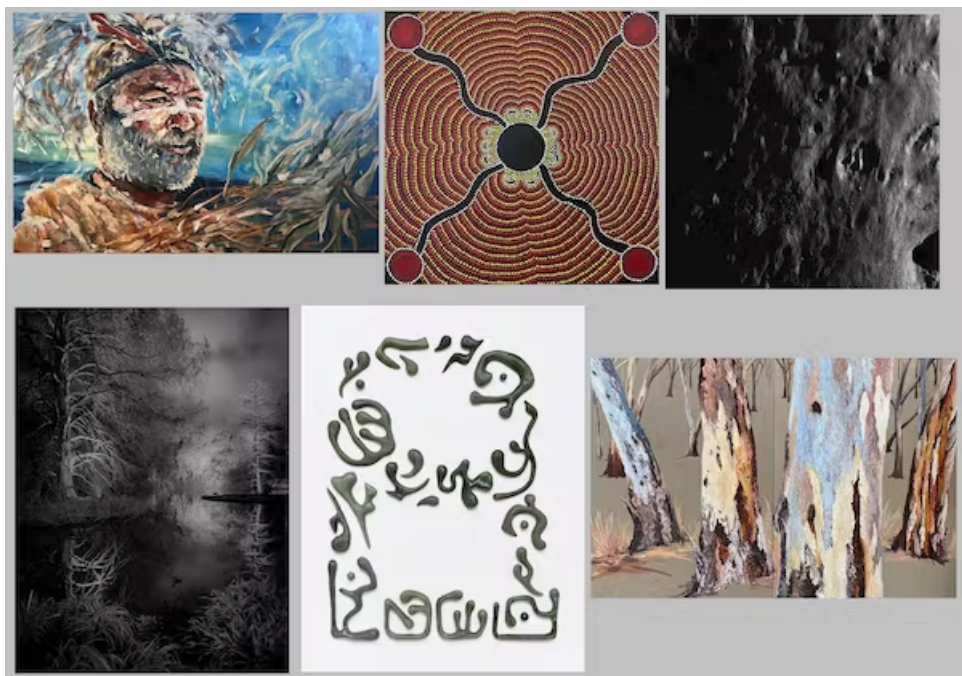
[Read more >>>](#)

4. HAVE YOU VOTED YET?

by Shane Sody

More than four hundred votes have been received so far, in polling for the People's Choice award at the Adelaide Park Lands Art Prize exhibition.

Six leaders have emerged as front runners. Record your on-line vote for your favourite inspirational Park Lands art work, before the exhibition closes on 7 May.



[Read more >>>](#)

5. JOIN GREEN PAKAPAKANTHI

by Doug McEvoy

A community-led initiative will launch later this month, to mitigate the effects of climate change on Victoria Park / Pakapakanthi (Park 16) creating more shade and enhancing the Park's biodiversity.

Come and help plant trees and shrubs, then stay for a picnic lunch on Saturday 29 April.



[Read more >>>](#)

6. WE NEED YOU - PLEASE JOIN US

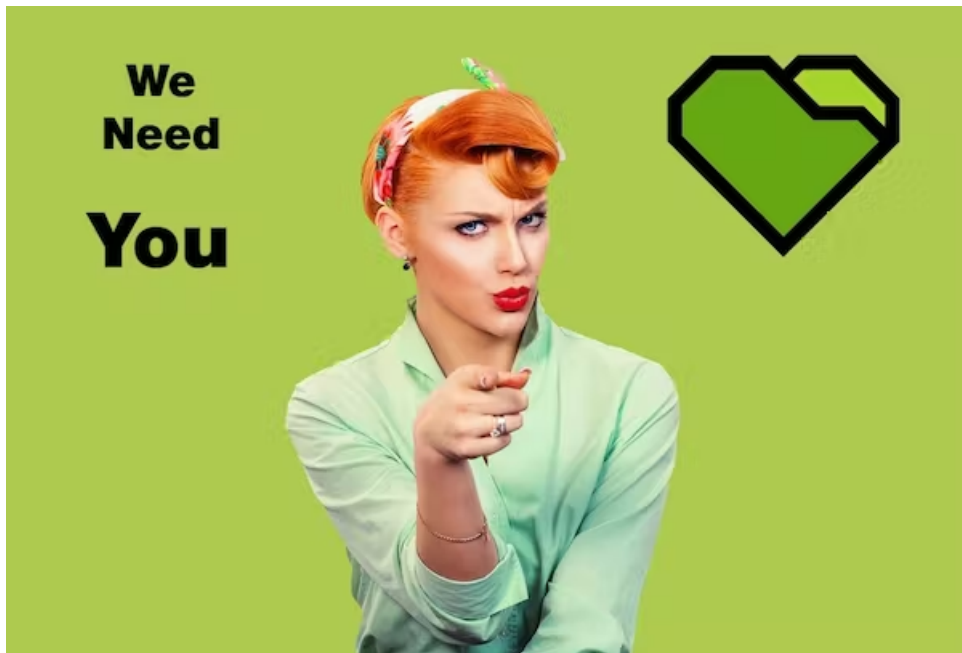
We are a grassroots community organisation. We [Explore, Inspire, Protect, and Restore.](#)

But we are only as strong as our [Members](#) and our [Volunteers](#).

You are receiving the non-members version of this newsletter which means you're not (yet) a Member of our team.

Will you help us to spread the word, to encourage others (especially the State Government!) to Love Your Park Lands ?

There are two ways to do that: as a [Member](#), or as a [Volunteer](#) (or both!)

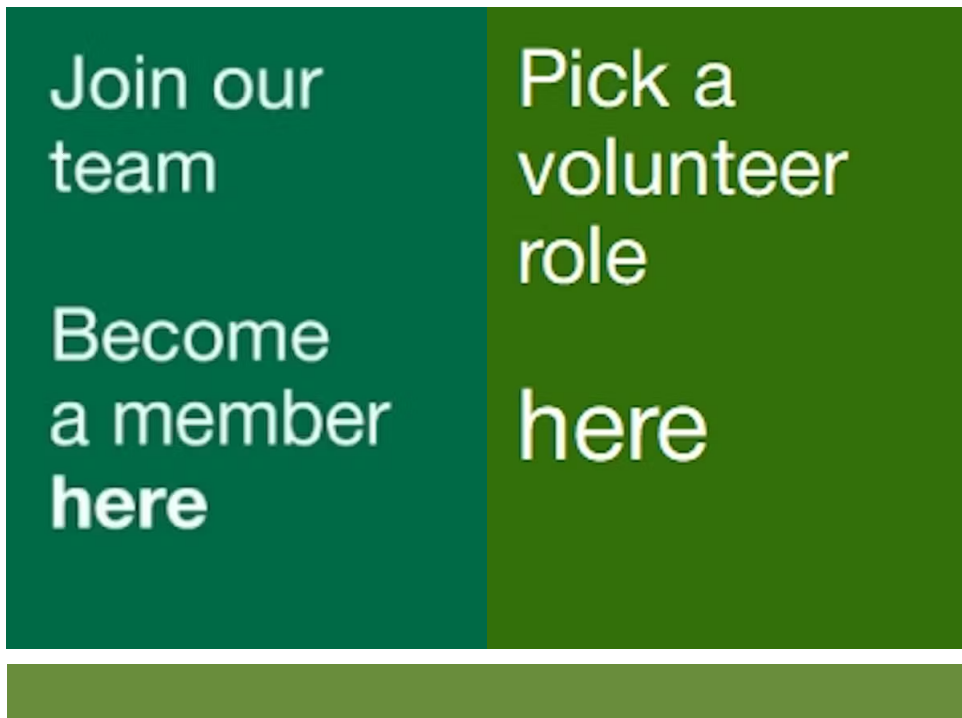


If you were to become an APA [member](#), you would then be able to book for any of our Guided Walks for free, and you would also unlock 15% discounts to all the merch in [the APA Shop](#).

More importantly, your membership fee (as low as \$15 per year for a single concession) would be tangible support for our Park Lands strategies: [Explore, Inspire, Protect and Restore](#).

If you were to become [a volunteer](#), there's a wide range of things you could do to help in one or more of our strategic activities.

Check out the volunteer options [here](#).



7. EQUESTRIAN FESTIVAL RETURNS

After a three-year break due to COVID, the sound of galloping horses will return to your Park Lands for the Adelaide Equestrian Festival, Thursday 20 to Sunday 23 April.

Building on the success of the former "International Three-Day Event" since 1997, this Festival will host a wider range of equestrian events.

Most of the festival is centred on Victoria Park / Pakapakanthi (Park 16); although the cross-country event will also utilise King Rodney Park / Ityamai-itpina (Park 15) and Rymill Park / Murlawirrapurka (Park 14).



[Read more >>>>](#)

8. IGNORING THE ELEPHANT

by Shane Sody

State Government bureaucrats are pressing ahead with plans for a new building on your Park Lands despite clear community feedback that it should go elsewhere.

Planning for a new Aquatic centre is proceeding, blind to clear community feedback that it should be sited on a brownfield location such as at Hindmarsh or Thebarton.



[Read more >>>>](#)

9. TRAVELLING YOUR PARKS

by Carla Caruso

“Staycation” was somewhat of a buzzword during the height of the pandemic.

But for some, that fever for being a tourist in their own city hasn't left them. One couple enjoy their home-based travel adventures so much, they've created a YouTube channel and have a large following for their vlogging.

Top of their list of things to do? Visiting your Adelaide Park Lands.



[Read more >>>>](#)

10. WORLD CONGRESS ON SUSTAINABLE PLACES

Adelaide is the host city for this World Congress in October 2023.

The organisers, World Urban Parks, are calling for proposals for presentations, workshops, or panel discussions to fit into one or more of eight "streams" such as "Greener and Wilder" or "Culture and Perspective" or "The Value of Simple Open Space."



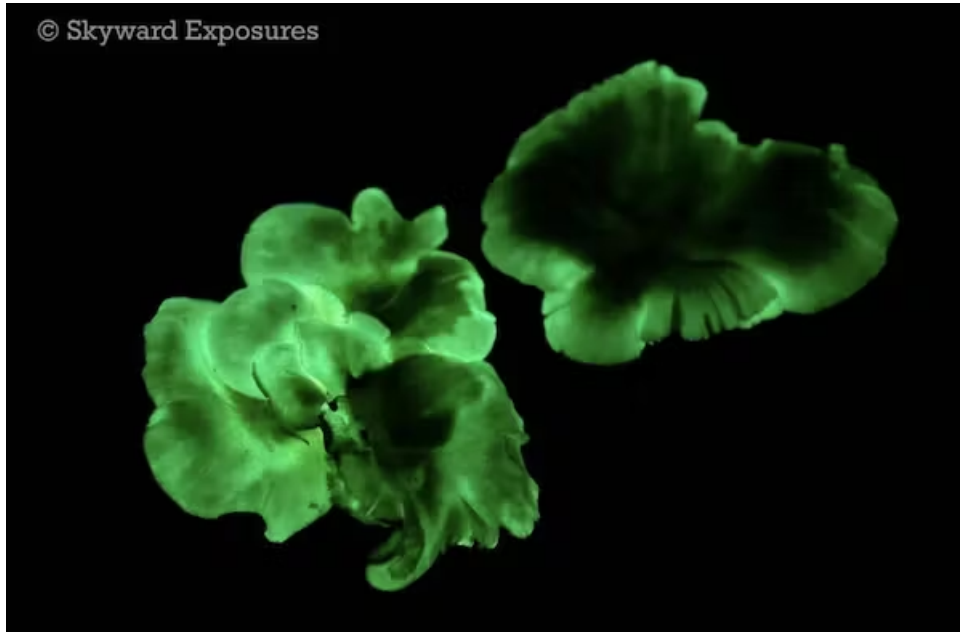
[Read more >>>>](#)

11. THE MAGIC OF MUSHROOMS

by Carla Caruso

As the weather cools, fungi enthusiasts have been on the hunt for 'ghost mushrooms', known for their eerie glow.

One patch of the luminous mushrooms has been spotted at the Adelaide Botanic Garden (Park 11). But will you be able to see them, shining in all their glory, after-hours?



[Read more >>>>](#)

12. HERDING BATS

by Carla Caruso

Staff at your Adelaide Botanic Garden have been carefully directing wayward bats across Plane Tree Drive, back into the adjacent Botanic Park.

Some of the grey-headed flying foxes in your Park 11 seem to have been disoriented by a recent music festival and motor sport events in your Park Lands.



[Read more>>>](#)

13. WHAT'S ON IN YOUR PARK LANDS - APRIL 2023

by Michael Genrich

Dive into these events we've found for you, in your Open Green Public Adelaide Park Lands from late March through to the end of April 2023.

Some of them will require early booking, so don't wait!

This is a repeat of the article from our newsletter of 1 April so some of these events have passed.



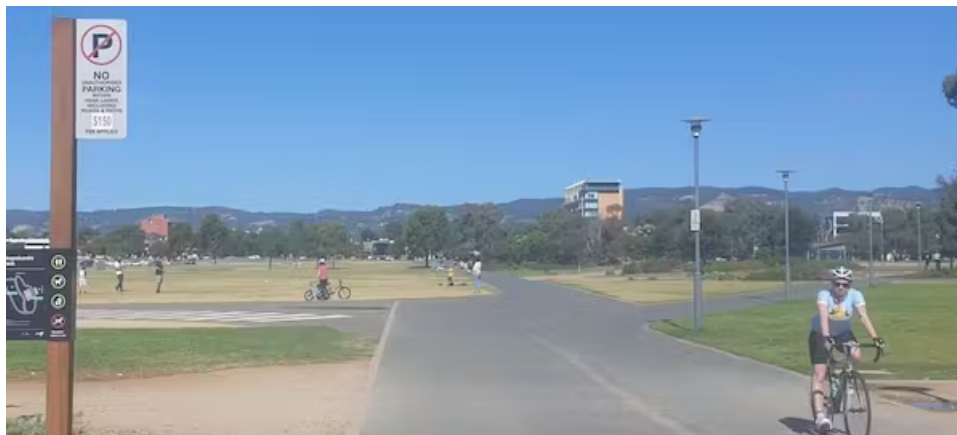
[Read more >>>>](#)

14. MOTOR RACING TRUMPS EVERYTHING

by Shane Sody

The State Government will annoy pedestrians and cyclists for two months later this year, to cater for a four-day carbon emission motor sport festival.

One of the most popular pedestrian and cycling routes across your Park Lands will be closed for 60 days, for safety reasons, while a motor sport track is constructed, yet again.



[Read more >>>>](#)

15. MISSING MEMBERS

Our membership list has been growing rapidly over the past few months. People are joining APA to help us Explore, Inspire, Protect, and Restore.

However, three members who've joined recently have done so without letting us know how to contact them. We've received membership payments from:

- Sarah Fidock on 1 April 2023;
- Rosalie J Ashton on 14 February 2023; and
- Robert Bowering on 19 December 2022.



Their payments have arrived in our bank account but they've given us no contact details.

If you know any of these three could you please pass on a message?

Just ask them to contact secretary@adelaide-parklands.asn.au so we can acknowledge their membership and keep them in the loop with Park Lands news.

NEWSLETTER TEAM

Editor: Shane Sody
Contributors: Carla Caruso, Michael Genrich, Doug McEvoy
Layout: Sabrina Iqbal
Proofreader: Trish Russell

Send content enquiries/submissions to: secretary@adelaide-parklands.asn.au

Here at APA, we hate marketing (spam) emails. That's why we deliver news about the Park Lands, in this email format, only twice per month. If you're after more regular information, please [follow us on Facebook](#) where we are posting every day.

However, if you'd rather not hear from us in future, you can [unsubscribe here](#).