

No. 72 - 1 April 2024

If this email is not displaying properly (e.g. if it's truncated or there are no pictures) [then click here to view this email in your web browser](#)

**1 April 2024****IN THIS NEWSLETTER:**

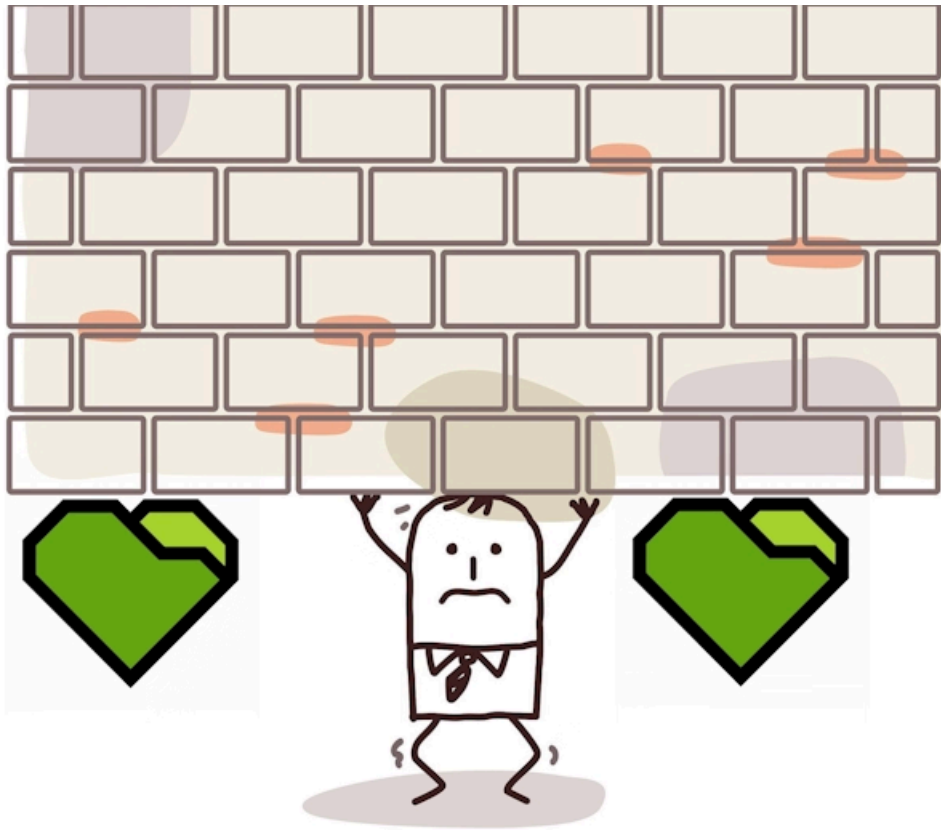
1. [STATE GOV'T LAND GRABS "MOST PRESSING" - SURVEY](#)
2. [SEVEN YEARS OF LOCKOUT ENDED](#)
3. [WHAT BIRD IS THAT? RAINBOW LORIKEET](#)
4. [URBAN REC: SOCIAL SPORT](#)
5. [PLEASE BECOME A MEMBER](#)
6. [WHAT'S ON IN YOUR PARK LANDS - APRIL 2024](#)
7. [UNDERPLANTING ENCOURAGED](#)
8. [E-SCOOTERS - PAIN FOR SOME](#)
9. [TRIBUTE TO DAVID PLUMRIDGE](#)
10. [STEPS FORWARD, STEPS BACK](#)
11. [MORE SECRET DEALS](#)
12. [WE'RE AT WALKFEST](#)
13. [RECLAIM LIGHT SQUARE](#)
14. [HARVEST ROCK ROAD CLOSURES](#)
15. [BIGGER THAN EVER ON FACEBOOK](#)
16. [WE'RE IN THE HISTORY FESTIVAL](#)

1. STATE GOV'T LAND GRABS "MOST PRESSING" - SURVEY

by Shane Sody

Hundreds of survey respondents have identified the State Government as the biggest threat to your Adelaide Park Lands.

The 2024 Park Lands Survey results will be used to plan our next initiatives as we Explore, Inspire, Protect and Restore in your Open, Green, Public Park Lands.



[Read more >>>](#)

2. SEVEN YEARS OF LOCKOUT ENDED

by Shane Sody

A pedestrian and cycling route through your north-western Park Lands, blocked off for the past seven years, has been quietly re-opened.



[Read more >>>](#)

3. WHAT BIRD IS THAT? RAINBOW LORIKEET

by Nicholas Munday, Adelaide Urban Birding

How much do you know about the birds in your Adelaide Park Lands?

In this, the second instalment of our series, What Bird is That? we take a close look at the raucous, brilliant, eye-catching rainbow lorikeet.



[Read more >>>](#)

4. URBAN REC: SOCIAL SPORT

by Rhia Daniel

There's a new trend for people wanting to play sport in your Park Lands as a social activity, without having to pay club membership fees or commit to organised training.



[Read more >>>](#)

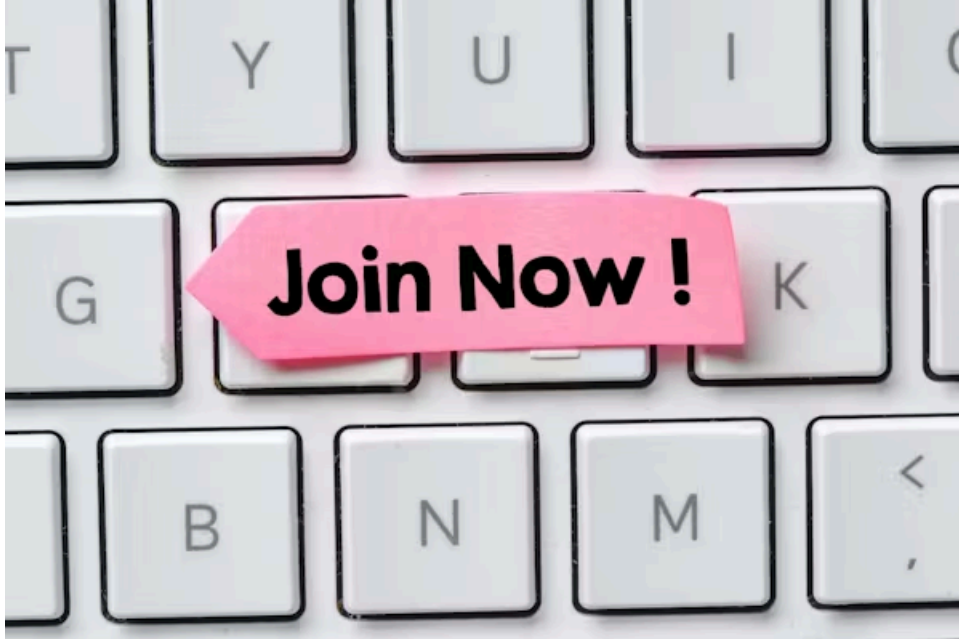
5. WE NEED YOUR HELP

We are a grassroots community organisation. We [Explore, Inspire, Protect, and Restore](#).

But we are only as strong as our [Members](#); our [Volunteers](#); and our [Donors](#).

You are receiving the non-members version of this newsletter which means you're not (yet) a Member of our team, or perhaps a previous membership has expired.

Will you help us? There are three ways to do that: as a [Member](#), as a [Volunteer](#) or as a [Donor](#).



If you were to become an APA [member](#), then you would then be able to book for any of our Guided Walks for free, and you would also unlock 15% discounts to all the merch in [the APA Shop](#).

More importantly, your membership fee (as low as \$20 per year for a single concession) would be tangible support for our Park Lands strategies: [Explore, Inspire, Protect and Restore](#).

If you were to become [a volunteer](#), there would be a wide range of things you could do to help in one or more of our strategic activities. For example,

- becoming a Park Ambassador; and/or
- writing stories for our [blog](#) and future editions of this newsletter.

Check out the full range of volunteer options [here](#).



6. WHAT'S ON IN YOUR PARK LANDS - APRIL 2024

by Esperanza Pretila

Here's the lineup of events and activities in your Adelaide Park Lands through to the end of April 2024.

From Easter celebrations at Adelaide Zoo to Guided Walks, family-friendly picnics, or professional development opportunities, there's a diverse range of experiences awaiting you.



[Read More >>>>](#)

7. UNDERPLANTING ENCOURAGED

by Carla Caruso

More underplanting beneath big trees in your Adelaide Park Lands would help discourage activities directly under them and manage the level of risk from falling limbs.

That's according to Joanna Wells, who's an outreach coordinator at Conservation SA and a councillor with the City of Mitcham.



[Read more >>>>](#)

8. E-SCOOTERS - PAIN FOR SOME

by Carla Caruso

You would've seen them parked alongside your Park Lands or riders zipping down footpaths on them.

E-scooters — some love the convenient mode of transport (and the ease of hiring them), others hate them.



[Read more >>>>](#)

9. TRIBUTE TO DAVID PLUMRIDGE

by John Bridgland

There have been multiple tributes paid in recent days to former Deputy Lord Mayor, David Plumridge, who died recently aged 91.

One of his close friends, author John Bridgland, has penned a personal tribute that reflects upon David Plumridge's legacy of protecting your Adelaide Park Lands.



[Read more >>>>](#)



10. STEPS FORWARD, STEPS BACK

by Shane Sody

Small steps towards improved access to your Park Lands are being more than offset by more and larger demands for effective privatisation of many other sites.

Months-long “temporary” fencing is only part of a growing push to commercialise parts of your Park Lands for the long-term.



[Read more >>>>](#)



11. MORE SECRET DEALS

by Shane Sody

The State Government and the City Council are negotiating in secret about 'commercial-in-confidence' usage of another part of your Park Lands.

New licences associated with Government development of a new Aquatic

Centre are bogged down in secrecy, involving commercial interests.



[Read more >>>>](#)



12. WE'RE AT WALKFEST

We're showing up outside your Adelaide Park Lands this month.

We're joining dozens of other community organisations, to share a love of walking in nature.

Please come and visit our stall at Walkfest, in Belair National Park on the morning of Sunday 14 April, to find out about our Guided Walks in your Park Lands.



[Read more >>>>](#)



13. RECLAIM LIGHT SQUARE

by Shane Sody

It's time to reclaim Adelaide's Squares for people, not traffic.

The City Council wants your views on the future of Light Square / Wauwi. Your Park Lands can be so much better with six lanes of traffic diverted around, not through, one of your Open, Green, Public spaces.



[Read more >>>>](#)



14. HARVEST ROCK ROAD CLOSURES

by City Mag's Helen Karakulak

The Harvest Rock festival is coming back to two of your eastern Park Lands in October this year.

The festival will once again require the closure of Bartels Road between Rymill Park/ Murlawirrapurka (Park 14) and King Rodney Park /Ityamai-itpina (Park 15).



[Read more >>>>](#)



15. BIGGER THAN EVER ON FACEBOOK

by Shane Sody

The City Council has followed the lead of the Adelaide Park Lands Association by becoming more active promoting your Park Lands on social media, including Facebook.



Adelaide Park Lands Association

5.2K likes • 6K followers



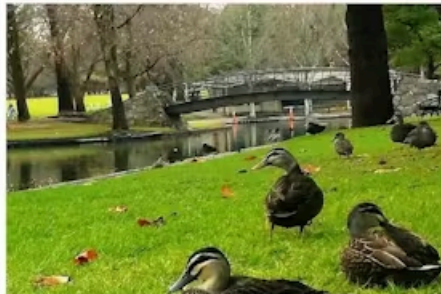
- Posts
- Subscriber Hub
- About
- Mentions
- Reviews
- Followers
- More ▾

[Read more >>>](#)

16. WE'RE IN THE HISTORY FESTIVAL

by Shane Sody

The Adelaide Park Lands Association is proud to be one of the many community groups taking part in South Australia's History Festival again, this year.



[Read more >>>](#)

Did you get this newsletter through a friend or a social media share?
 Make sure you get the next issue DIRECTLY, as soon as it's released.
 This newsletter is issued only twice per month and we don't share your email address with anyone.

SUBSCRIBE


NEWSLETTER TEAM

Editor: **Shane Sody**

Contributors (to this issue): Carla Caruso, Esperanza Pretila, Rhia Daniel, Nicholas Munday, John Bridgland, City Mag's Helen Karakulak..

Layout: Sabrina Iqbal

Proofreader: Trish Russell

Send content enquiries/submissions to: secretary@adelaide-parklands.asn.au

Here at APA, we hate marketing (spam) emails. That's why we deliver news about the Park Lands, in this email format, only twice per month. If you're after more regular information, please [follow us on Facebook](#) where we are posting every day.

However, if you'd rather not hear from us in future, you can [unsubscribe here](#).