

10. Cricket nets and pepper tree avenue

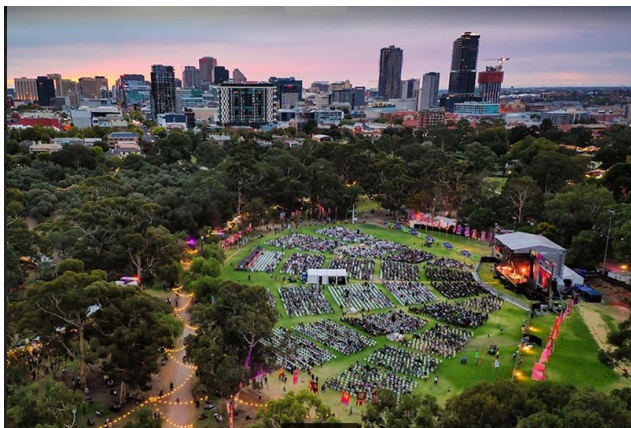
The cricket nets are for public use when not being used by Christian Bros. College students.



The avenue of pepper trees, rolling away downhill, was planted in 1905.

11. Sports fields and major events

Christian Bros College has used these sport fields since 1908. The annual Equestrian Festival brings horses through here. The largest field has hosted concerts, after motor races, and in 2021, hosted WOMAdelaide.



12 Wooden bridges

Several of these were built in 1906 and soon afterwards.



13. Aboriginal connection

Before European settlement Botanic Creek was used as a meeting place for the Kaurna community and especially where the creek emptied into a waterhole that later became the lake in the Botanic Garden.



Painting :Alexander Schramm (1850)

WHO ARE WE?

The Adelaide Park Lands Association is a community-based, non-profit organisation.

We help you **explore** with Guided Walks, and **inspire** you with art and images, as we **protect**, and **restore** Adelaide's unique, National Heritage-listed irreplaceable garland of Park Lands.

Please join us, as a member, to support our work, and enjoy free participation in our regular Guided Walks



www.adelaide-parklands.asn.au

Scan this QR code for the full Trail Guide on our website.



Adelaide Park Lands Association

EXPLORE

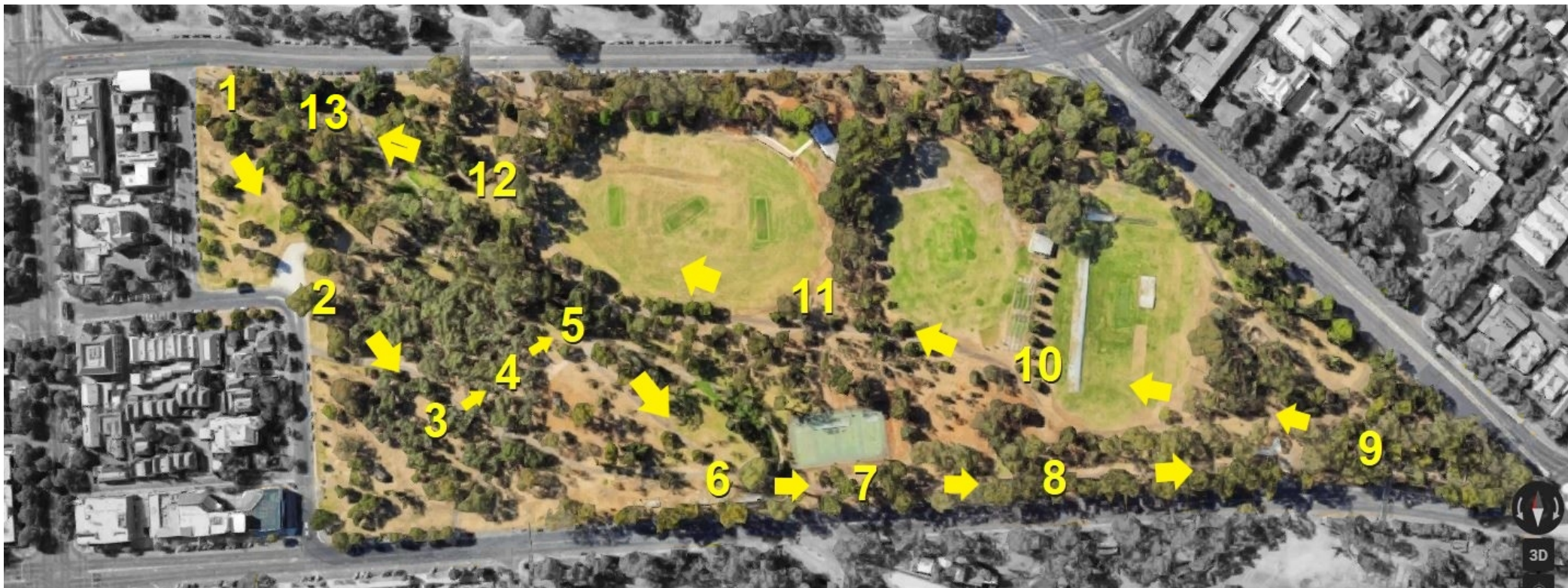
King Rodney Park / Ityamai-itpina (Park 15)

Scan the QR code on the back of this leaflet for the full Trail Guide



1.5 km
Allow 90 mins

This Trail Guide traverses traditional lands of the Kaurna people. We acknowledge and pay respect to the past, present and future traditional custodians and elders of this land.



1. Introduction and naming

Known in the 19th century as “Bartel’s Park” its name now honours one of the Kaurna elders at the time of European settlement. Ityamai-itpina was also known as “King Rodney”.

2. River red gum and plaque

One of the largest trees in Park 15, probably planted in the 1870’s. A plaque at its base (dated 1997) recognises the Australia-Japan Friendship Association.

3. Glover East Playspace

The third of three playgrounds funded by and bearing the name of the Lord Mayor of the early 1920’s, Charles Glover.



4. Olive grove

One of many olive groves planted in the 1860’s and 70’s as a quick fix to replace the native timber that early settlers stripped from the Park Lands.

5. Botanic Creek

An “ephemeral” waterway, it flows north (only after rain) into the Botanic Garden lake. This steel bridge (1999) replaced an earlier timber one.

6. Disc golf

The 9-hole course was installed in 2020. It’s free to use.



7. Basketball courts

Tennis courts here were removed in 2016, to accommodate a “temporary” skate park.

8. Park Lands trail

Pathways through this Park were laid out in the early 1900s by the then City Gardener, August Pelzer

9. Eucalyptus woodland

The SE corner of the park features a dense and tall grove of eucalypts: red gums and South Australian blue gums

