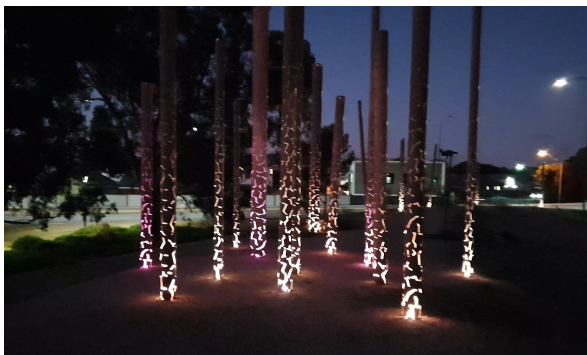


**7. “Eucalyptus Alive” (2012)**

Made of weathering steel, by Marijana Tadic. The poles appear to come alive at sunset, with lighting inside them.



**8. Narnungga Urban Forest**

This 6-hectare bushland park, criss-crossed with trails, was created in 2012. For the previous 131 years it had been a water and sewer depot.



**9. Picnic area and “Flock Shelter” (2012)**

Another weathering steel sculpture: “a junction between architecture and art” by James Martin and Steve Hooper. To the east, two large cotton palm trees and a formal gateway; remnants of the water works depot era.



**10. Sporting leases**

The 3-storey “pavilion” built in 2017 is subject of a 42-year lease to the SA Cricket Association.



A nearby memorial acknowledges the use of this Park by Railways Institute members who died in WW1.

**WHO ARE WE?**

The Adelaide Park Lands Association is a community-based, non-profit organisation.

We help you **explore** with Guided Walks, and **inspire** you with art and images, as we **protect**, and **restore** Adelaide's unique, National Heritage-listed irreplaceable garland of Park Lands.

Please join us, as a member, to support our work, and enjoy free participation in our regular Guided Walks



Scan this QR code for the full trail guide on our website

[www.adelaide-parklands.asn.au](http://www.adelaide-parklands.asn.au)



**Adelaide  
Park Lands  
Association**

**EXPLORE**

**Gladys Elphick Park / Narnungga (Park 25)**

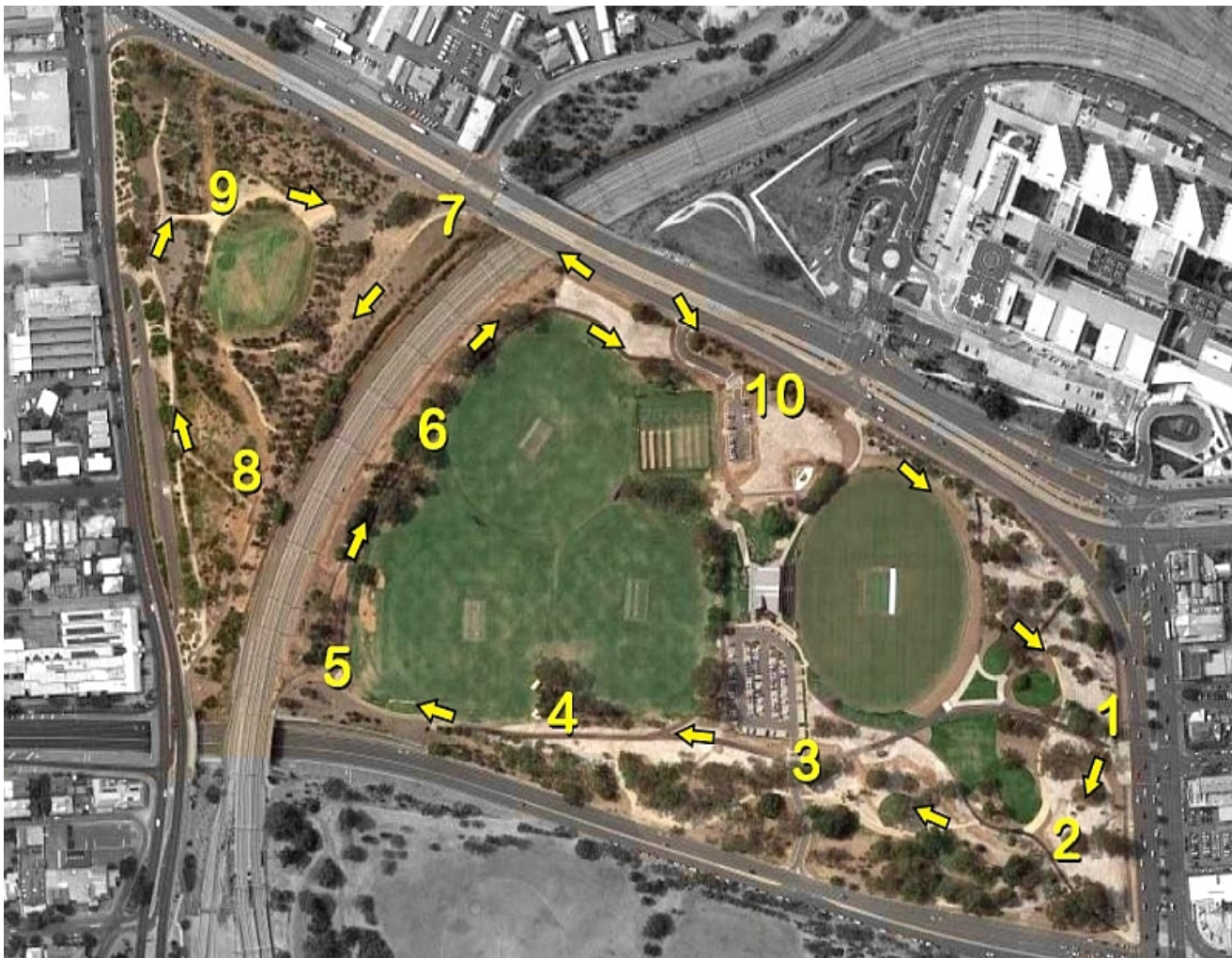
Scan the QR code on the back of this leaflet for the full trail guide



This Trail Guide traverses traditional lands of the Kaurna people. We acknowledge and pay respect to the past, present and future traditional custodians and elders of this land.

### 1. Context

The only Park split in two by a railway line: 18 hectares in the east that, for a century, has been home to sporting fields; and six hectares in the west that has been restored to Open Green Public after 130 years of industrial usage.



### 3. Sports fields and car park

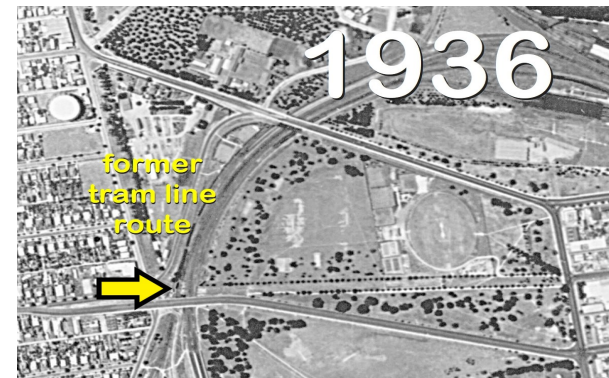
Apart from the main “Karen Rolton Oval” there are three other ovals. In 2018, car parking spaces within the Park were increased from 105 to 158. Thirty sports officials have unlimited free parking here.

### 2. Skate Park

The newest feature: opened September 2022. A \$3 million, Olympic-standard facility; built around and between existing trees.

### 4. Former Mile End Road and tram line

This footpath was once Mile End Rd, which connected Hindley St with Henley Beach Rd. In 1923, Glover Ave was opened to replace it. The tram route along the road was relocated shortly afterwards.



### 5. Park Lands Trail

Curving around the western side of the sports fields, bordered by Aleppo pines and Moreton Bay fig trees.



### 6. Naming

Gladys Elphick aka “Aunty Glad” was the founding president of the Council of Aboriginal Women of SA in the 1960’s. Her life’s work helped to improve the social status of First Nations people in SA with equitable social services and rights.

“Narnungga” means native pine place.



Gladys Elphick (1904 - 1988)