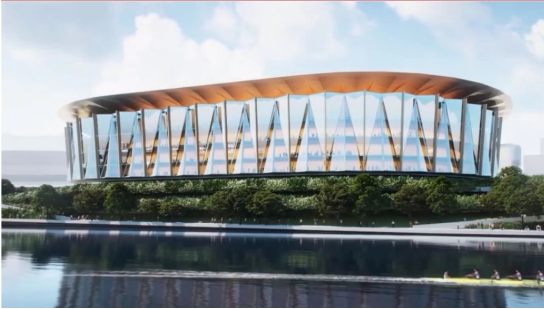


11. Helen Mayo Park

Degraded areas taken over by fenced car park, and Council works depot.

12. Development proposals

Rather than remediation or re-greening this area keeps getting suggested as a development site: for a hotel, a helipad, or a stadium.



13. Rowing clubs

Riverside Rowing Club (includes a function centre) and Pulteney Grammar rowing shed.

14. Trees of Helen Mayo Park

257 trees in this Park, including more than 100 river red gums, along the River Torrens Linear Path

15. Barr Smith Walk

Established in early 1900s with a line of poplar trees along the water's edge.

Barr Smith Walk, 1915



16. First bridge site

In 1839, less than 2 years after European settlement began, this was the site of the first bridge over the River.

17. Mosaic and sculpture

A mosaic headstone honours Kaurna elder Doris May Graham. A nearby stainless steel sculpture by Bert Flugelman of the 'Mall's Balls' fame.

18. Popeye and paddle boats

The tourist boats have been operating here since 1935. Both the launches and pedal-powered boats are operated by the Shuman family.



19. 'Talking Our Way Home

2005 art installation evoking letters sent home by migrants, including artist Shaun Kirby's personal story.



Adelaide Park Lands Association

EXPLORE

Elder Park, Riverbank Precinct & Helen Mayo Park

Scan the QR code on the back of this leaflet for the full Trail Guide

WHO ARE WE?

The Adelaide Park Lands Association is a community-based, non-profit organisation.

We help you **explore** with Guided Walks, and **inspire** you with art and images, as we **protect**, and **restore** Adelaide's unique, National Heritage-listed irreplaceable garland of Park Lands.

Please join us, as a member, to support our work, and enjoy free participation in our regular Guided Walks.

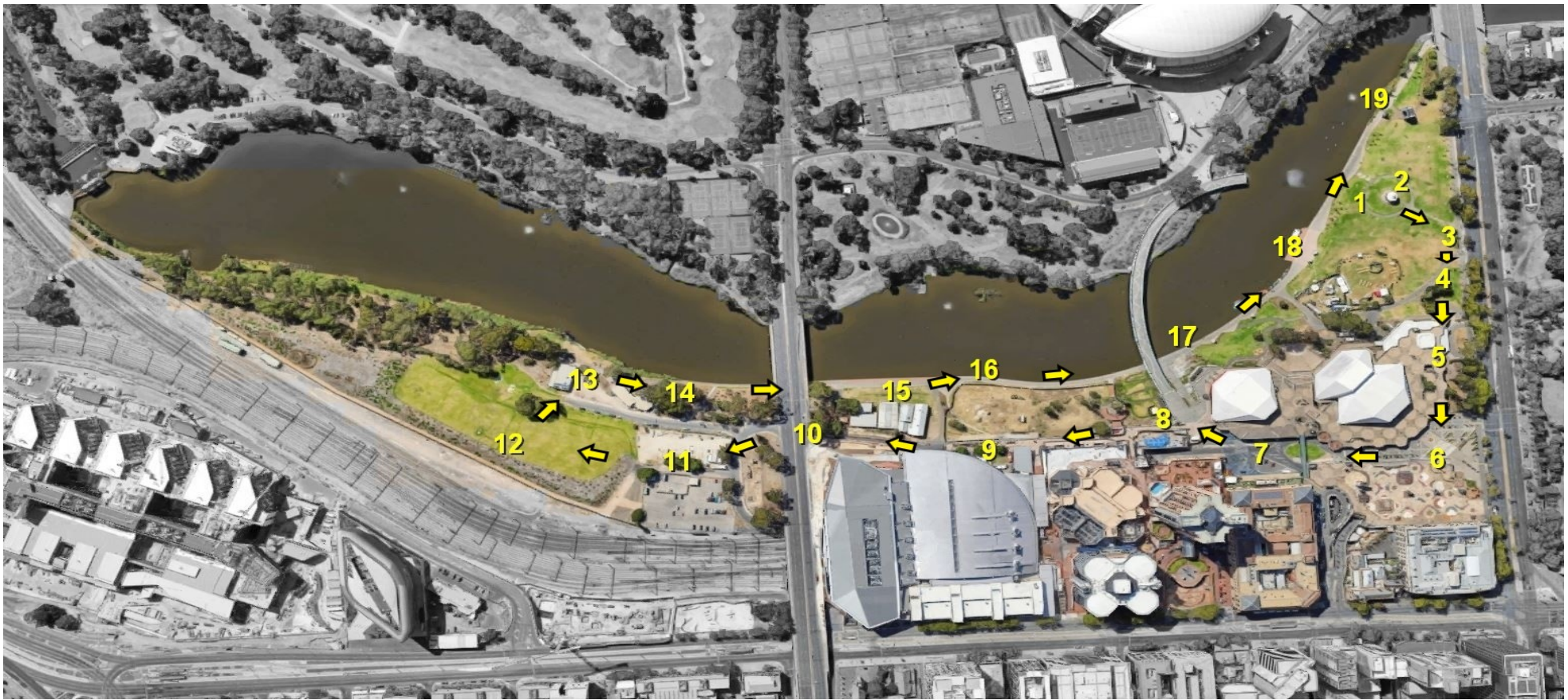


Scan this QR code for the full Trail Guide on our website

www.adelaide-parklands.asn.au



This Trail Guide traverses traditional lands of the Kaurna people. We acknowledge and pay respect to the past, present and future traditional custodians and elders of this land.



1. Elder Park
 Named for Sir Thomas Elder. For decades, until the 1960s, it was the only landscaped part of the Park Lands.

2. Rotunda
 Made in Glasgow, Scotland. Gifted to the City, 1882, by Sir Thomas Elder.

3. Fireman Gardner's Memorial
 He was killed in a Rundle Street Xmas Eve fire, 1886.

4. Festival Centre
 Built 1970-73. Formerly the site of City Baths, and a migrant hostel.



5. Kurna Reconciliation sculpture
 On the Festival Centre forecourt, since 2002.



6. Festival Plaza
 Area of open public space reduced by a 23-storey office building erected by Walker Corporation.

7. Railway Station and casino
 There were long debates in the 1850s about the best site for a City railway station. This heritage-listed building dates from 1928. Taken over by a casino since 1985, with a hotel added in 2020.

8. Riverbank footbridge
 Completed in 2014, to improve access to Adelaide Oval. Illuminated at night.

9. Commercial, entertainment zone
 Since the mid-1980s this area has had the convention centre, hotel and office buildings erected over railway lines.

10. Victoria Bridge
 The current bridge that spans both the railway lines and the River Torrens, was erected in the 1960s. It replaced an earlier one from 1870.



Victoria Bridge, 1870