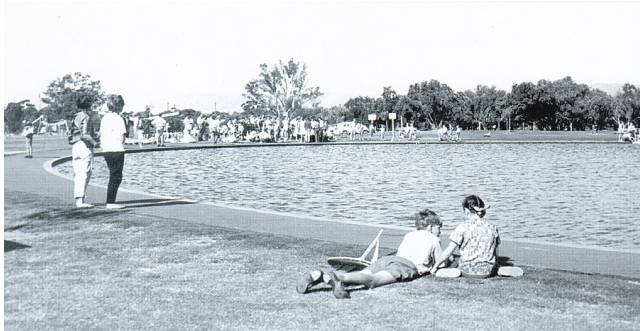


## 12. Entrance art sculpture

Erected in 1997, as part of Port Road widening works.

## 13. Model boat pond

Built in the 1960's. There are in-principle plans to erect a public artwork, a "Place of Courage" for those affected by domestic violence, on the eastern side of the pond.



## 14. APA re-greening project

This paved bitumen area was formerly netball courts, then a car park, closed in 2022. APA has been given Council permission to plan for re-greening the southern part, opposite Thebarton tram stop. Longer-term, beach volleyball courts are planned for the northern part.

## 15. Community open spaces

A family picnic area with tables, barbecues, and shade. Until 2031, large-scale excavations for hospital construction may affect this area, and beyond.

## 16. Circus site – event space

Circuses have been pitching their tents here since 1953. Many other events and music festivals use this space.

## 17. Park 27A – JE Brown Park & the 'Bunyip Trail'

Across the bridge, enjoy a story book adventure in bushland on the river's edge.



## 18. Naming and landscaping

Named for prominent politician and journalist Sir John Lavington Bonython (1875-1960). The Kaurna name "Tulya Wardli" means "Police Home."

This park was long neglected until the 1960's when Town Clerk William Veale landscaped not only here, but also Rymill Park and Veale Gardens.

## 19. Park Lands trail

The bitumen path through this Park is just a small component of Australia's longest hills to coast pathway – the River Torrens Linear path.



# Adelaide Park Lands Association

## EXPLORE

## Bonython Park / Tulya Wardli (Park 27)

Scan the QR code on the back of this leaflet for the full Trail Guide



This trail guide traverses traditional lands of the Kaurna people. We acknowledge and pay respect to the past, present and future traditional custodians and elders of this land.

## WHO ARE WE?

The Adelaide Park Lands Association is a community-based, non-profit organisation.

We help you **explore** with Guided Walks, and **inspire** you with art and images, as we **protect**, and **restore** Adelaide's unique, National Heritage-listed irreplaceable garland of Park Lands.

Please join us, as a member, to support our work, and enjoy free participation in our regular Guided Walks



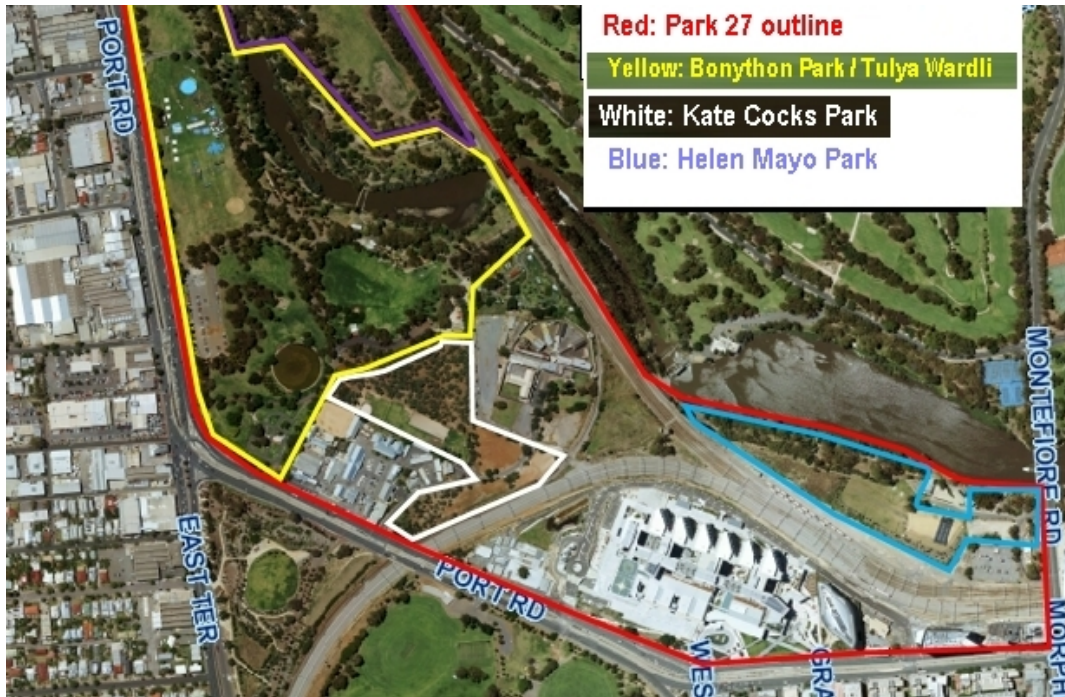
[www.adelaide-parklands.asn.au](http://www.adelaide-parklands.asn.au)

Scan this QR code for the full Trail Guide on our website



## 1. Introduction – at the kiosk

Bonython Park / Tulya Wardli is only one part of the larger Park 27 which extends northward to Park Tce at Bowden. This kiosk re-opened in April 2021 after a 3 year closure.



## 2. Adventure playspace

Updated in 2012 – a family-favourite outing.



## 3. The billabong and terraced garden

Landscaped in the 1960s. A haven for waterbirds.

## 4. The 'Magic Forest'

Includes a native bee 'hotel' installed in 2018. The Roma Mitchell garden (behind the fence) is maintained by residents of Adelaide Day Centre for Homeless Persons.

## 5. Old Adelaide Gaol, west wall.

It was the longest continually operating prison in Australia (1841-1988). State Heritage-listed. The site of many executions. Gaol tours are available.

## 6. Olive grove and SA Police "greys"

Olives were harvested by prisoners from the 1870's. The horses are gradually killing the olive trees but are needed close to the City, for police operations.

## 7. Western Yard Entrance signal cabin

Erected 1915 – redundant since the 1980's but State Heritage listed. No public access across rail lines.

## 8. Kate Cocks Park

Includes the historic olive grove and land both sides of Gaol Rd. Most of this small Park will be lost to a new Women's and Children's Hospital and eight-storey car park.

## 9. Hospitals

The RAH was completed in 2017. The garden alongside, to the west of the RAH, is earmarked as a "future expansion space" for extensions to the Royal Adelaide Hospital in coming decades.



## 10. Thebarton Police barracks

Established 1917. Operations here include horses, dog training, traffic camera, armoury, and police historical society. Despite State Heritage protection for 10 buildings, the entire barracks site is set for demolition to make way for a new Women's and Children's Hospital.

## 11. Road Safety centre

A mock roadway, open to the public apart from during police road safety lessons for school children. Alongside is a 'Gift of Life' rose garden honouring organ donors.